



www.estesrockets.com

ESTES-COX CORP.
1295 H Street, PO Box 227
Penrose, CO 81240-0227
PRINTED IN CHINA

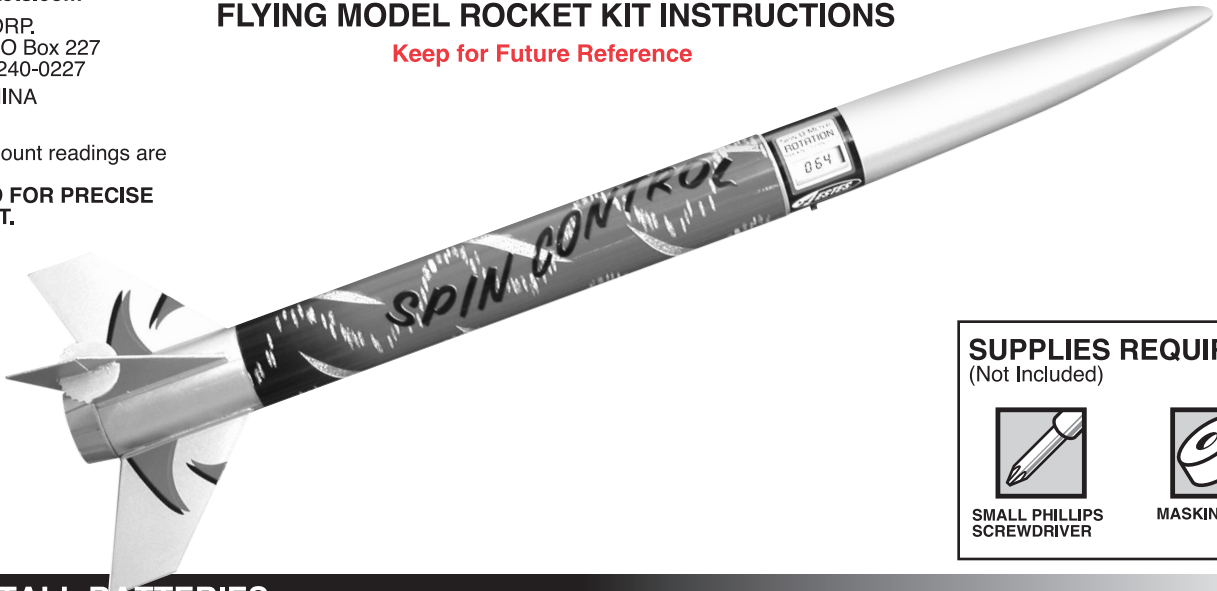
SPIN CONTROL™

FLYING MODEL ROCKET KIT INSTRUCTIONS

#1414

Keep for Future Reference

NOTICE: Spin Count readings are estimates.
NOT INTENDED FOR PRECISE MEASUREMENT.



SUPPLIES REQUIRED (Not Included)

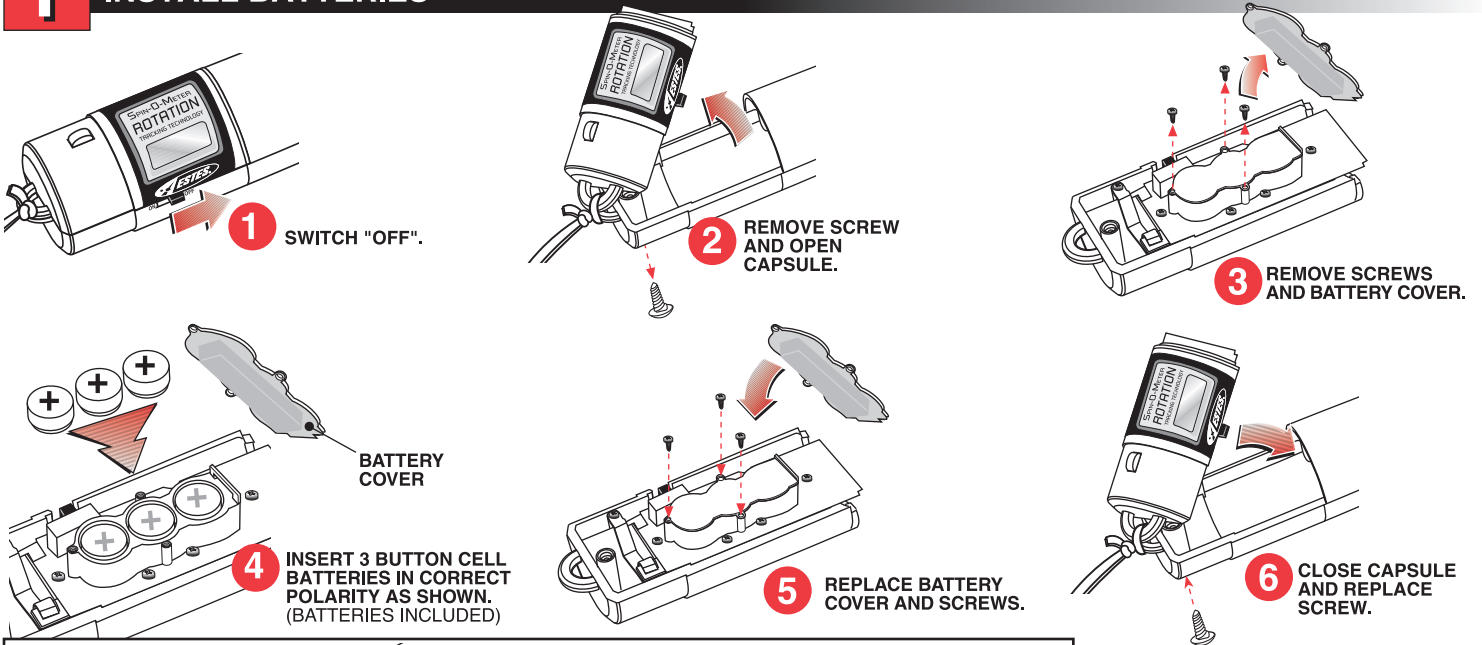


SMALL PHILLIPS
SCREWDRIVER



MASKING TAPE

1 INSTALL BATTERIES



OPERATING NOTE:

SWITCH 'ON' NOSE
CONE OFF ROCKET

'Err' CODE WILL
APPEAR

NOTE: If you switch
Nose Cone 'ON'
before inserting into
Rocket an 'Err' code
will appear. Once
Nose Cone is placed
in Rocket it will
change to '0000' and
is ready to launch.

SWITCH 'ON' NOSE
CONE ON ROCKET

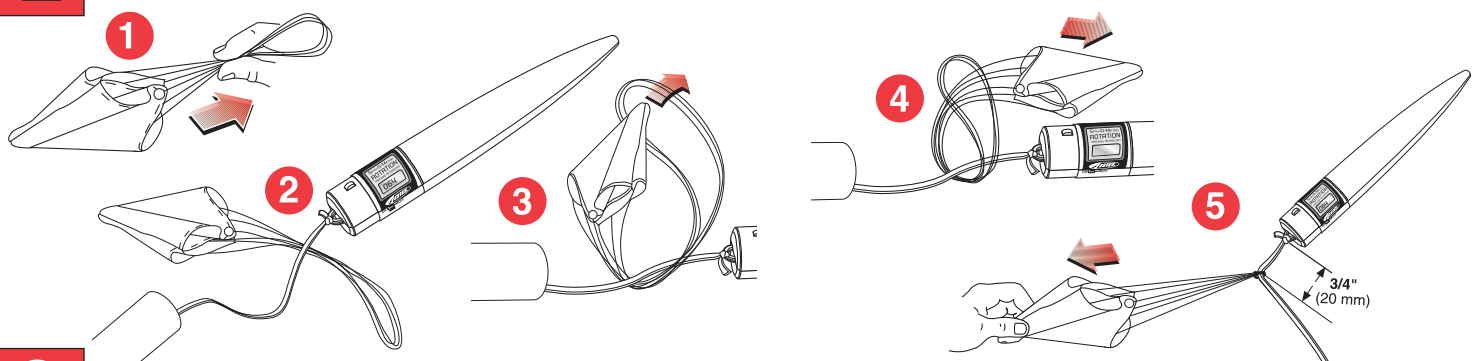
'0000' CODE
WILL APPEAR

BATTERY CAUTION:

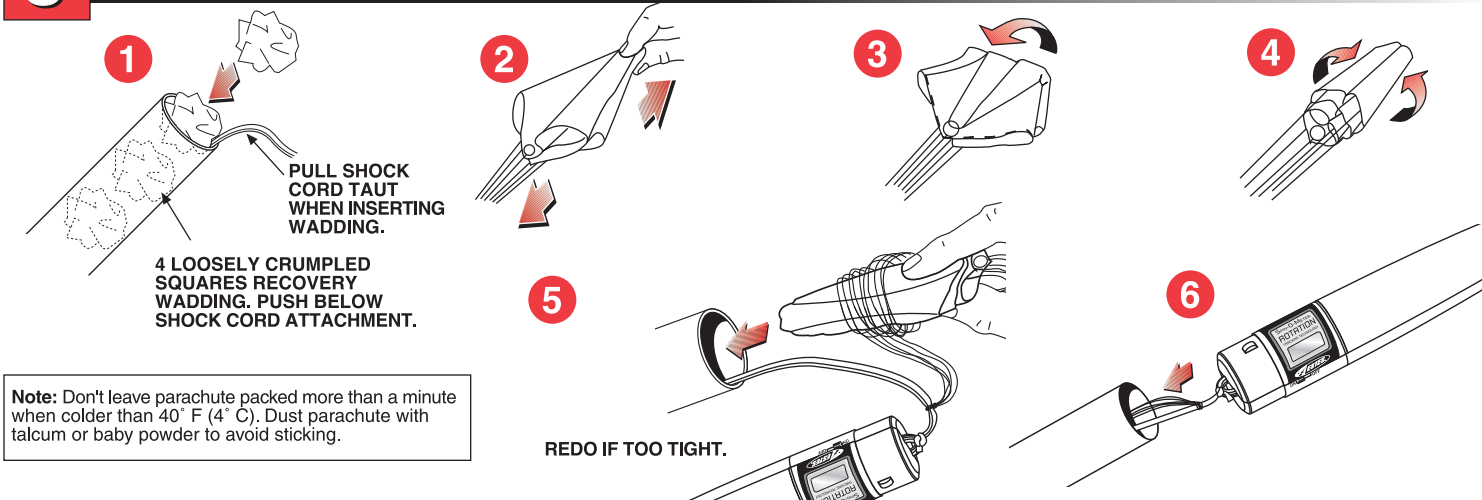
- Install batteries in the correct polarity.
 - Use only batteries of the same or equivalent type recommended.
 - Do not use rechargeable batteries in capsule.
 - Remove old or dead batteries from capsule.
- For Battery Replacement contact Estes-Cox Corp.
1-800-525-7651 M-F 8:00 am - 4:30 pm MT or order
online at www.estesrockets.com.

Item #	Description
60455	Button Cell Battery

2 ATTACH THE PARACHUTE

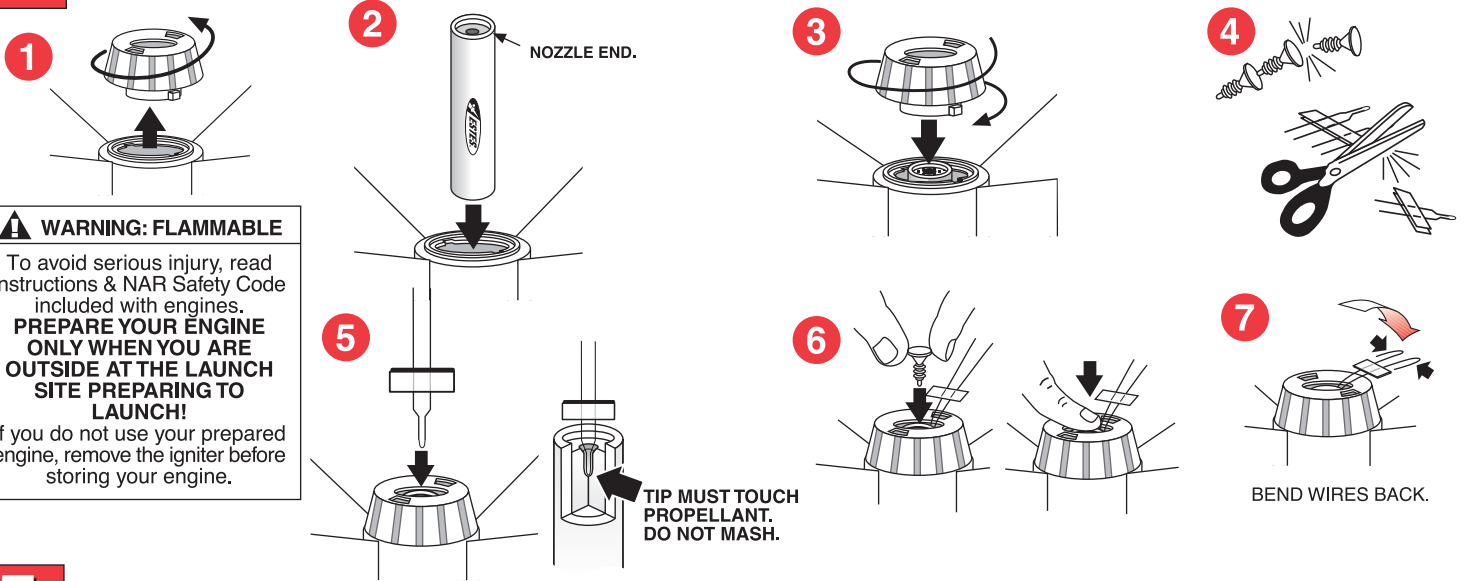


3 PREPARE PARACHUTE FOR FLIGHT



Note: Don't leave parachute packed more than a minute when colder than 40° F (4° C). Dust parachute with talcum or baby powder to avoid sticking.

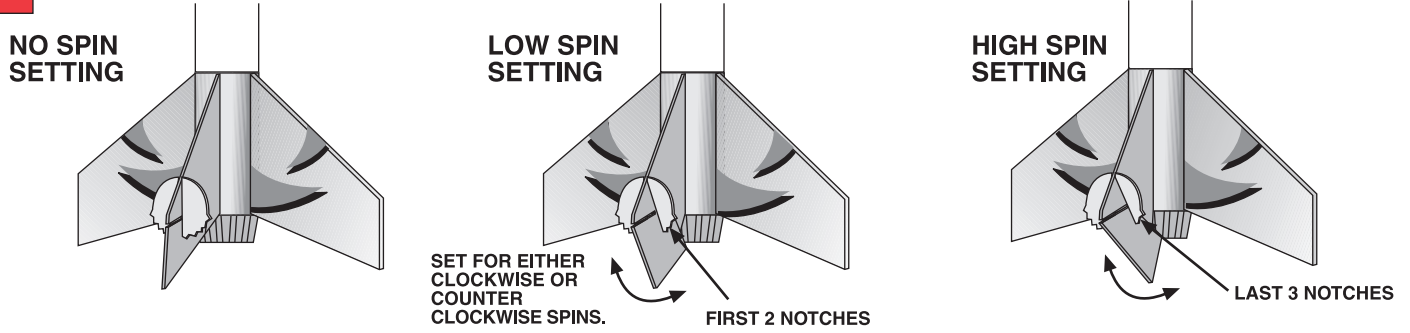
4 PREPARE ENGINE



⚠ WARNING: FLAMMABLE

To avoid serious injury, read instructions & NAR Safety Code included with engines. **PREPARE YOUR ENGINE ONLY WHEN YOU ARE OUTSIDE AT THE LAUNCH SITE PREPARING TO LAUNCH!** If you do not use your prepared engine, remove the igniter before storing your engine.

5 FIN ADJUSTMENT FOR SPIN FLIGHTS



Play the 'Spin Control'™ Game: Choose an engine, set the fin to any one of the 5 settings and guess how many spins rocket will make during flight. Launch rocket, then compare guess with number shown on nose cone. Closest guess without going over wins! NOTE: With 10 fin settings (5 left and 5 right) and 5 different engines to choose that's 50 different ways to play!

KEY ALWAYS OUT UNTIL FINAL COUNTDOWN!

ADDITIONAL ESTES® ENGINES, WADDING AND IGNITERS - SOLD SEPARATELY. RECOMMENDED ESTES ENGINES B6-2, C6-3

OPERATING NOTE:

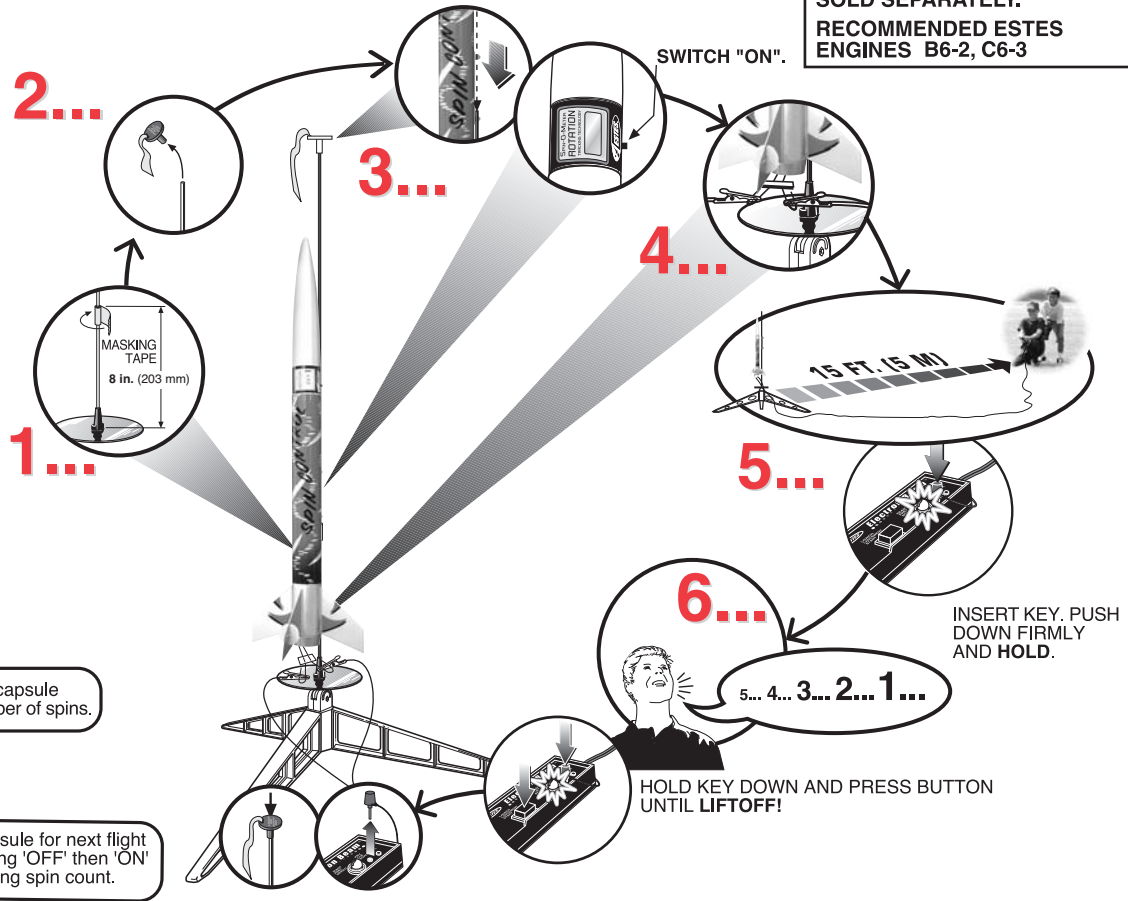
SWITCH 'ON' NOSE CONE OFF ROCKET

NORMAL 'Err' CODE WILL APPEAR

NOTE: if you switch Nose Cone 'ON' before inserting into Rocket an 'Err' code will appear. Once Nose Cone is placed in Rocket it will change to '0000' and is ready to launch.

SWITCH 'ON' NOSE CONE ON ROCKET

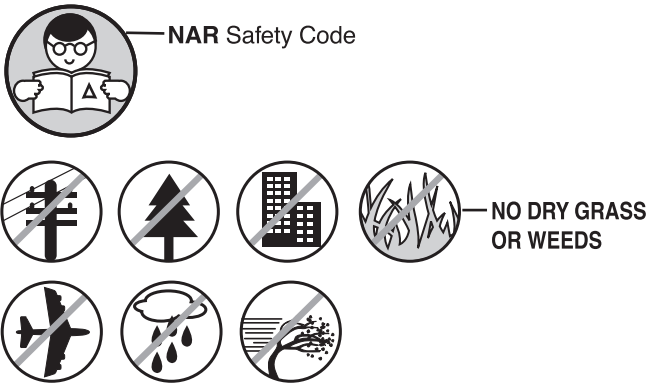
NORMAL '0000' CODE WILL APPEAR



After a flight capsule displays number of spins.

Reset capsule for next flight by switching 'OFF' then 'ON' after reading spin count.

PRECAUTIONS



PRE-LAUNCH CHECK

For safety, never launch a damaged rocket. Check the rocket's body, nose cone and fins. Also, check the engine mount, recovery system and launch lug(s). Repair any damage before launching the rocket.

FLYING YOUR ROCKET

Choose a large field (500 ft. [152 m] square) free of dry weeds and brown grass. The larger the launch area, the better your chance of recovering your rocket. Football fields and playgrounds are great. Launch only with little or no wind and good visibility.

Always follow the enclosed National Association of Rocketry (NAR) SAFETY CODE.

MISFIRES

TAKE THE KEY OUT OF THE CONTROLLER. WAIT ONE MINUTE BEFORE GOING NEAR THE ROCKET! Disconnect the igniter clips and remove the engine. Take the plug and igniter out of the engine. If the igniter has burned, it worked but did not ignite the engine because it was not touching the propellant inside the engine. Put a new igniter all the way inside the engine without bending it. Push the plug in place. Repeat the steps under Countdown and Launch.