



www.estesrockets.com

ESTES INDUSTRIES
1295 H Street
Penrose CO 81240
PRINTED IN CHINA

SUPER SHOT™

MINI FLYING MODEL ROCKET INSTRUCTIONS KEEP FOR FUTURE REFERENCE

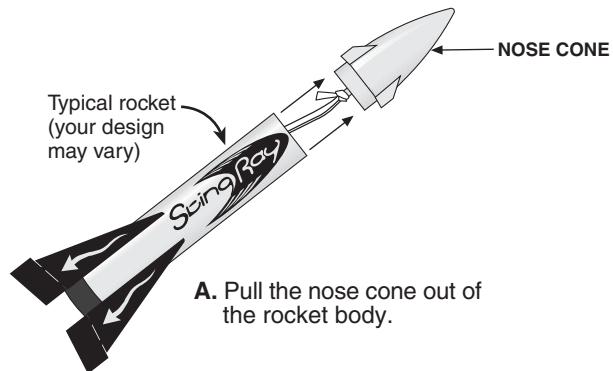


#1887

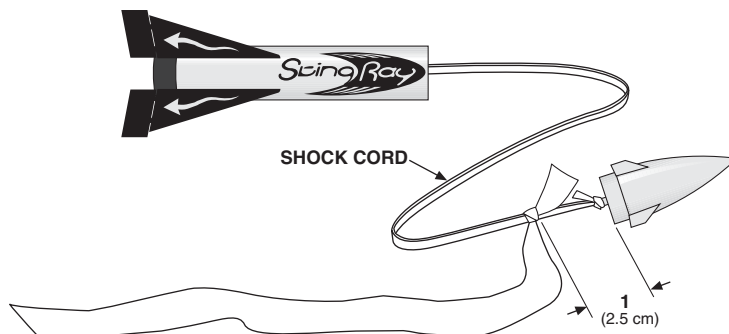
ASSEMBLY TIP: Read all instructions before beginning work on your model. Make sure you have all parts and supplies.

Use these instructions for each of your Super Shot® rockets.

1. ROCKET STREAMER ATTACHMENT

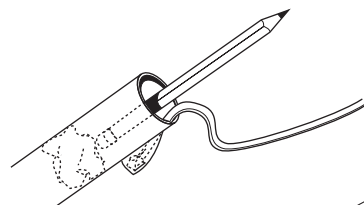


A. Pull the nose cone out of the rocket body.



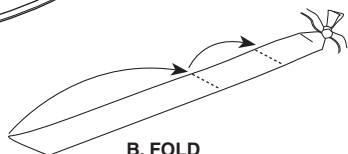
B. Measure 1 (2.5 cm) from the nose cone and tie streamer to shock cord with a double knot.

2. PREPARE STREAMER FOR FLIGHT

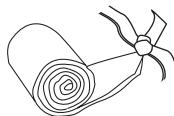


A. Loosely crumple and insert 1/4 of a square of recovery wadding into rocket body

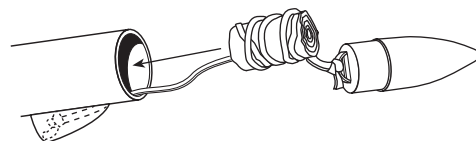
IMPORTANT:
Wadding must be in place and slide freely for rocket to work properly!



B. FOLD STREAMER



C. ROLL



D. Wrap shock cord loosely around streamer. Insert streamer into rocket. Streamer should slide easily into body tube. If fit is too tight, unfold and repack.

NOTE: Only Estes wadding (#302274) recommended.

3. PREPARE ENGINE FOR FLIGHT

WARNING : FLAMMABLE

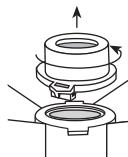
To avoid serious injury, read instructions & NAR Safety Code included with engines.

PREPARE YOUR ENGINE ONLY WHEN YOU ARE OUTSIDE AT THE LAUNCH SITE PREPARING TO LAUNCH!

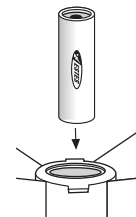
If you do not use your prepared engine, remove the igniter before storing your engine.



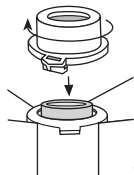
A. Separate igniter and igniter plug.



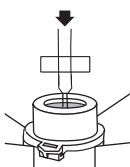
B. Twist off retainer ring at rear of rocket.



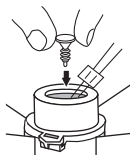
C. Slide engine into rocket body as shown.



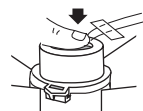
D. Twist retainer ring into locked position to hold engine in place.



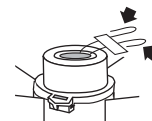
E. Hold rocket upside down and drop in igniter. **Igniter must touch propellant.**



F. Insert igniter plug.



G. Firmly push igniter plug all the way in.

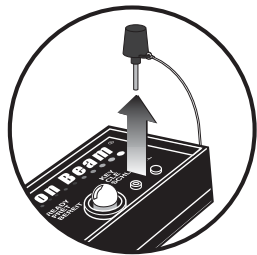


H. Bend igniter wires back as shown.

COUNTDOWN AND LAUNCH

ESTES LAUNCH SUPPLIES

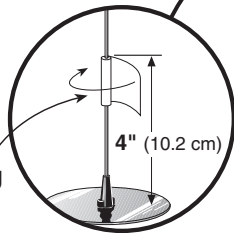
- (Sold Separately)
- ¥ Super Shot™ Launch Pad and Controller or Porta Pad® II Launch Pad and Electron Beam Launch Controller
 - ¥ Recovery Wadding
 - ¥ Igniters (with Engines)
 - ¥ Igniter Plugs (with Engines)
 - ¥ Recommended Engines: 1/4A3-3T, 1/2A3-4T, A3-4T, A10-3T



KEY ALWAYS OUT UNTIL FINAL COUNTDOWN!

1...

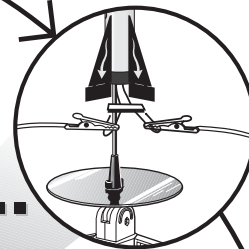
Masking Tape



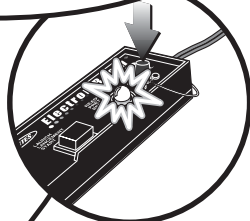
2...



3...



4...



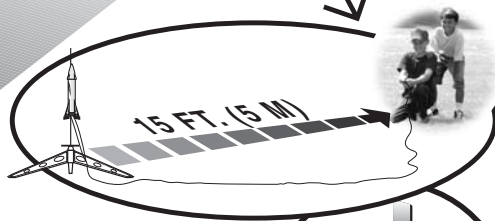
INSERT KEY. PUSH DOWN AND HOLD.

5...

4... 3... 2... 1...

HOLD KEY DOWN AND PRESS LAUNCH BUTTON UNTIL LIFT-OFF!

LAUNCH BUTTON



PRECAUTIONS

NAR Safety Code



NO DRY GRASS OR WEEDS

FLYING YOUR ROCKET

Choose a large field (250 ft. [76 m] square) free of dry weeds and brown grass. The larger the launch area, the better your chance of recovering your rocket. Football fields and playgrounds are great. Launch only with little or no wind and good visibility.

Always follow the National Association of Rocketry (NAR) Safety Code.

MISFIRES

TAKE THE KEY OUT OF THE CONTROLLER. WAIT ONE MINUTE BEFORE GOING NEAR THE ROCKET! Disconnect the igniter clips and remove the engine. Take the plug and igniter out of the engine. If the igniter has burned, it worked but did not ignite the engine because it was not touching the propellant inside the engine. Put a new igniter all the way inside the engine without bending it. Push the plug in place. Repeat the steps under Countdown and Launch.