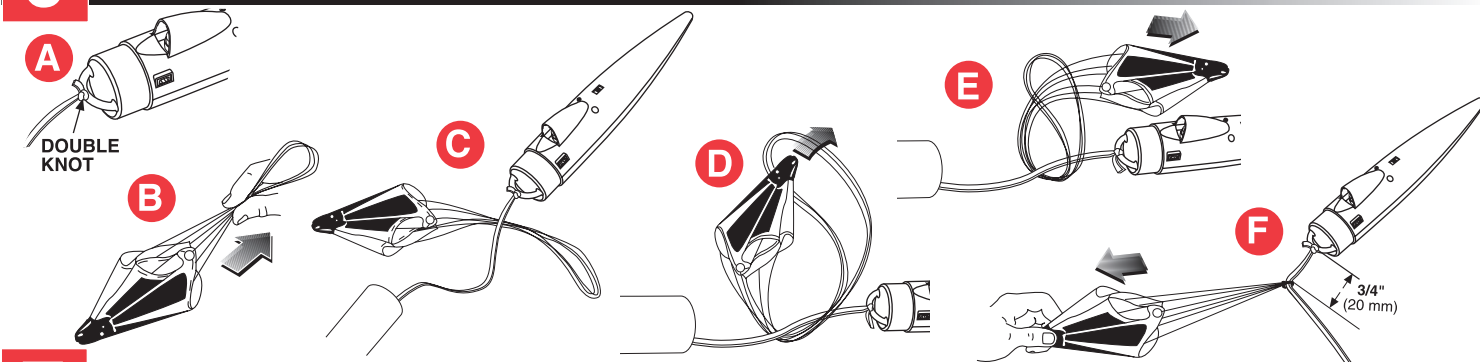
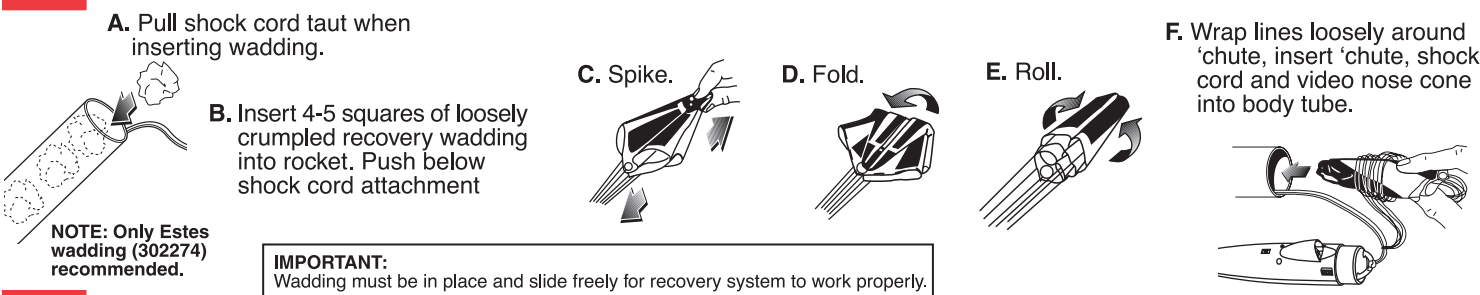


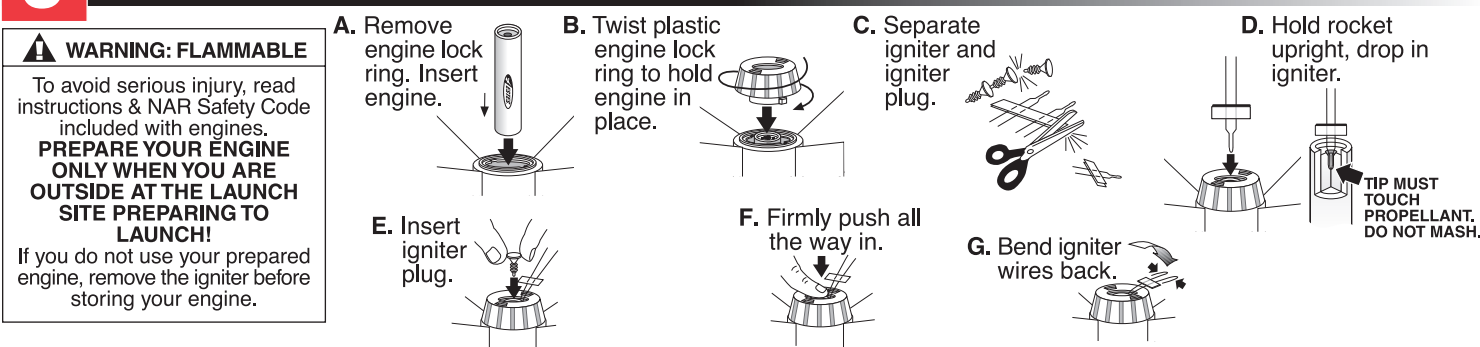
6 ATTACH SHOCK CORD AND PARACHUTE



7 PREPARE ROCKET



8 PREPARE ENGINE

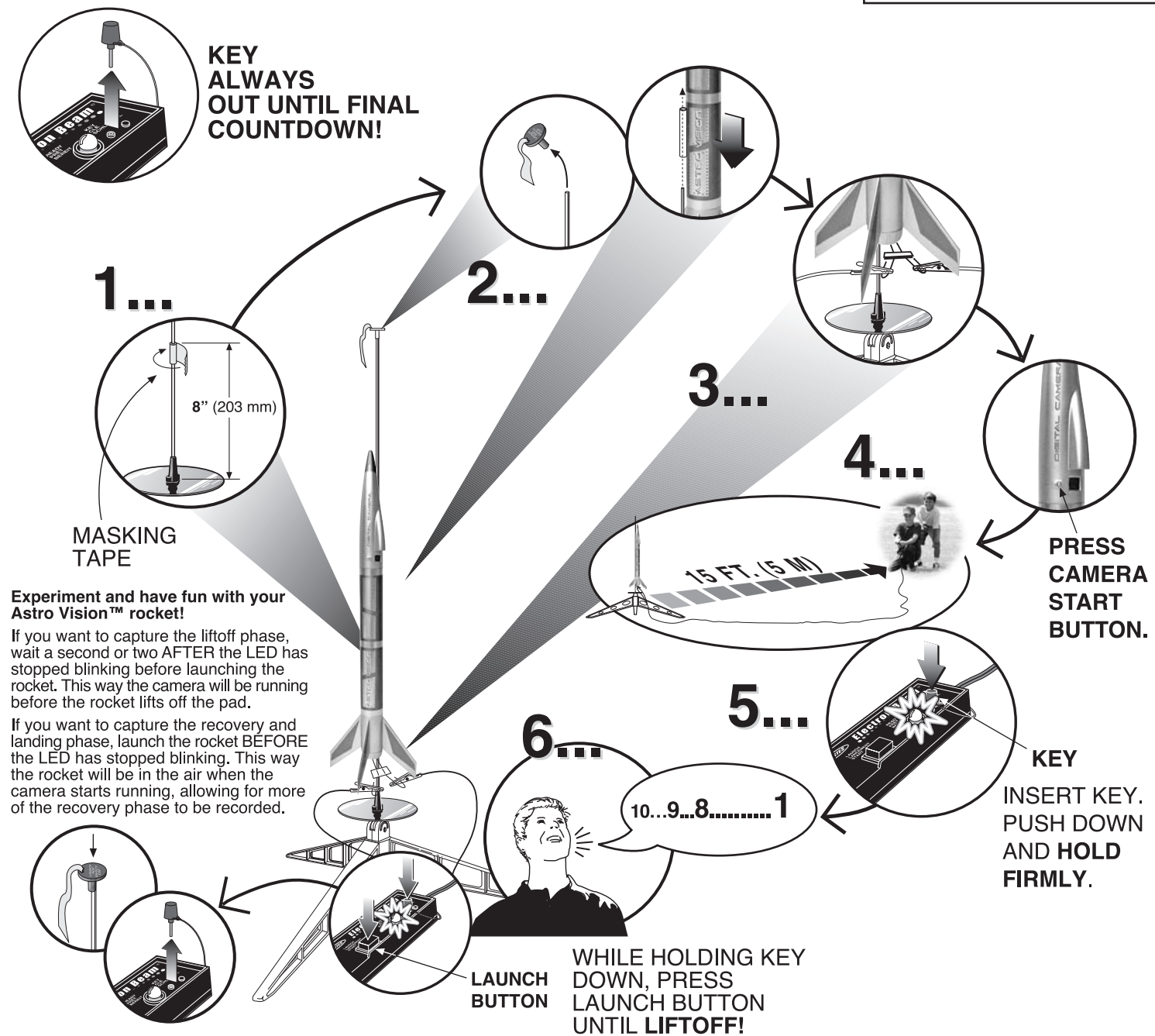


TROUBLESHOOTING

- LED does not light when start button is pressed.**
- Batteries are low ————— Replace batteries.
 - Batteries are installed incorrectly ————— Check polarity.
- No video was taken by camera.**
- Batteries are low ————— Replace batteries.
 - Camera mode switch was moved to Off or Picture Mode ————— Do not move mode switch until video is downloaded to computer. doing so erases all information stored in camera.
 - USB not connected properly ————— Check connection.
 - Software not properly loaded ————— Check software installation.
 - Start button was not pressed before launch ————— Press Start Button before each launch.
 - Camera memory is full ————— Download video from camera after each flight.
- No pictures were taken by camera.**
- Batteries are low ————— Replace batteries.
 - Camera mode switch was moved to Off or Video Mode ————— Do not move mode switch until pictures are downloaded to computer. Doing so erases all information stored in camera.
 - USB not connected properly ————— Check connection.
 - Software not properly loaded ————— Check software installation.
 - Start button was not pressed before launch ————— Press start button before each launch.
 - Camera memory is full ————— Download pictures from camera.
- AVI (Video) file takes a long time to download.**
- Depends on speed of computer ————— Check computer's operating speed or you may need to upgrade your computer.
- Computer does not recognize camera after software has been installed.**
- Computer system not capable of running software ————— You may need to update your computer.
 - Computer had problem loading software ————— Run un-install Wizard, then reinstall software.

COUNTDOWN AND LAUNCH

Estes® Recommended Engines:
B4-4, B6-4, C6-5



PRECAUTIONS



PRE-LAUNCH CHECK For safety, never launch a damaged rocket. Check the rocket's body, nose cone and fins. Also, check the engine mount, recovery system and launch lug(s). Repair any damage before launching the rocket.

FLYING YOUR ROCKET

Choose a large field (250 ft. [76 m] square) free of dry weeds and brown grass. The larger the launch area, the better your chance of recovering your rocket. Football fields and playgrounds are great. Launch only with little or no wind and good visibility. Always follow the National Association of Rocketry (NAR) SAFETY CODE.

MISFIRES

TAKE THE KEY OUT OF THE CONTROLLER. WAIT ONE MINUTE BEFORE GOING NEAR THE ROCKET! Disconnect the igniter clips and remove engine. Take the plug and igniter out of the engine. If the igniter has burned, it worked but did not ignite the engine because it was not touching the propellant inside the engine. Put a new igniter all the way inside the engine without bending it. Push the plug in place. Repeat the steps under Countdown and Launch.

ESTES ASTRO VISION™

DIGITAL VIDEO ROCKET INSTRUCTIONS

www.estesrockets.com

ESTES-COX CORP.
1295 H Street, PO Box 227
Penrose, CO 81240-0227
PRINTED IN CHINA

Minimum System Requirements

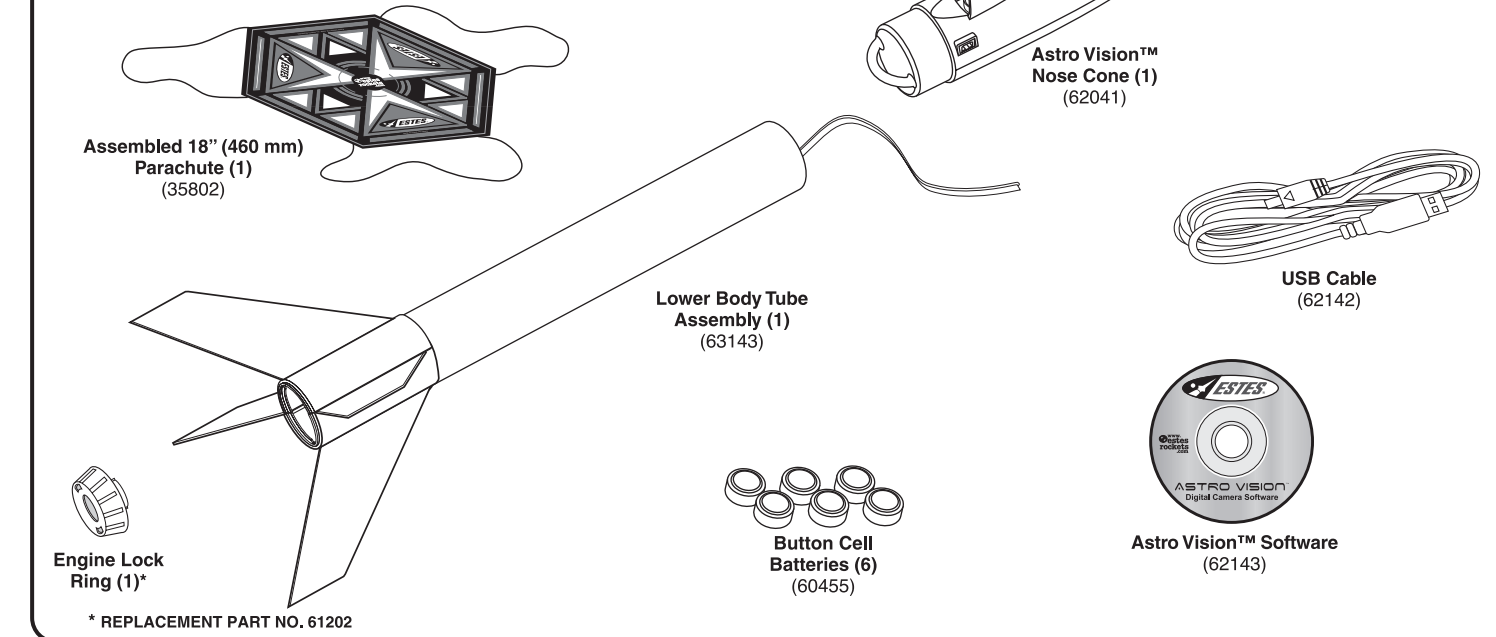
Microsoft WIN98/2000/NT/ME/XP Operating System
125 MB hard disk storage
32 MB RAM
USB Interface
CD-ROM Drive
Color Monitor (Suggest at least 800 x 600 24-bit color)
Video media player to view .avi file



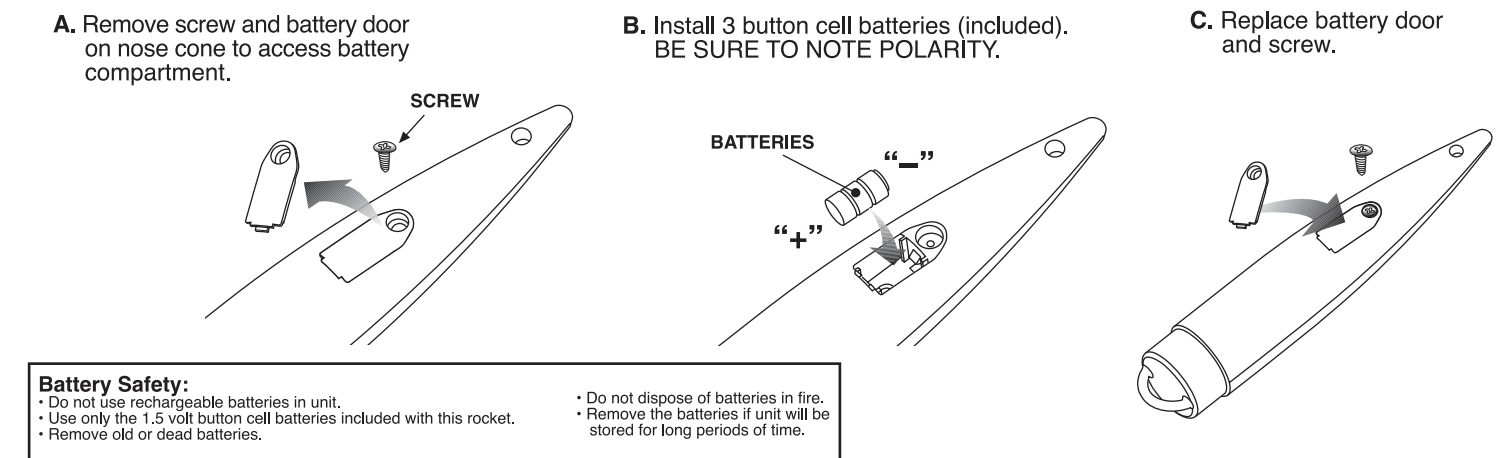
#1899

PARTS FOR DIGITAL CAMERA ROCKET

See separate instructions for launch assembly and launch controller operation.

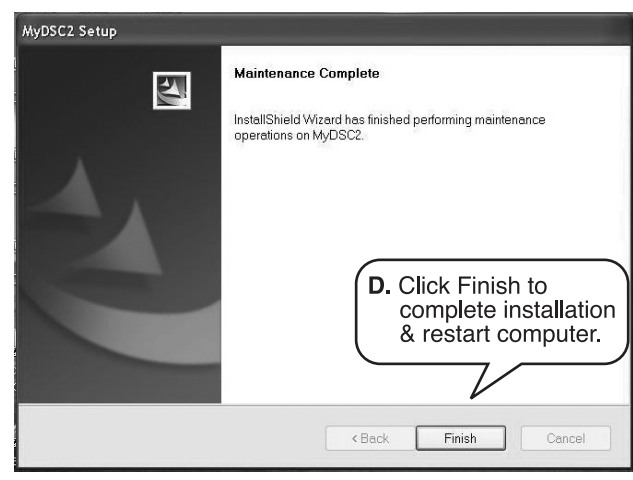
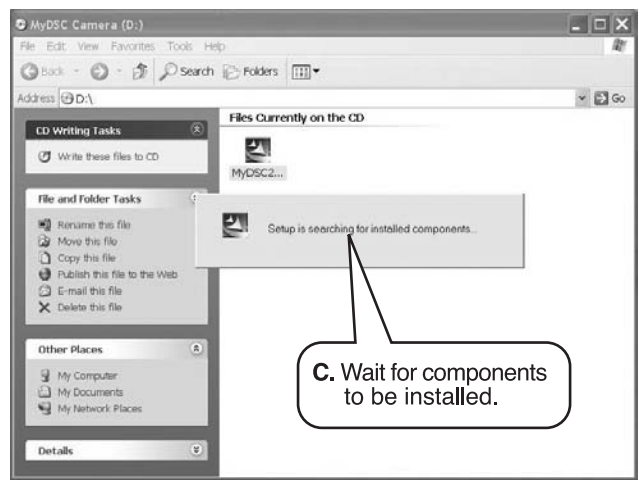
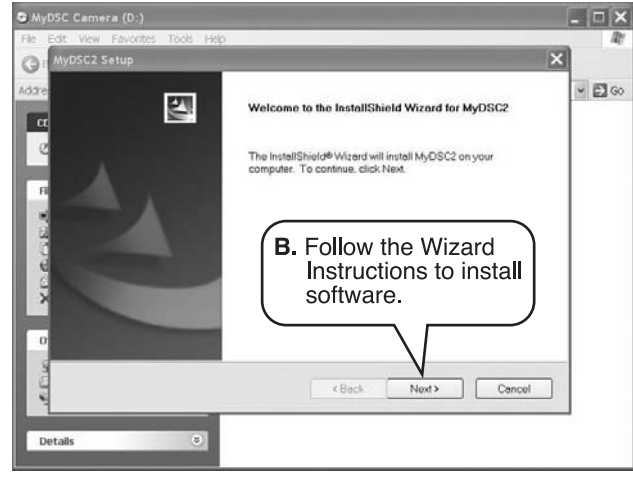
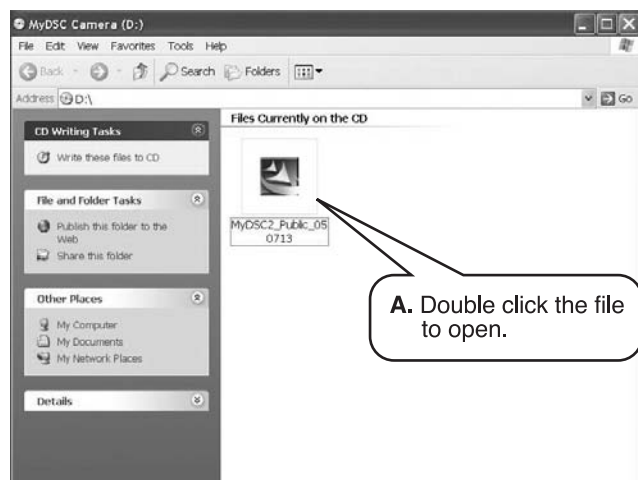


1 INSTALL THE CAMERA BATTERIES



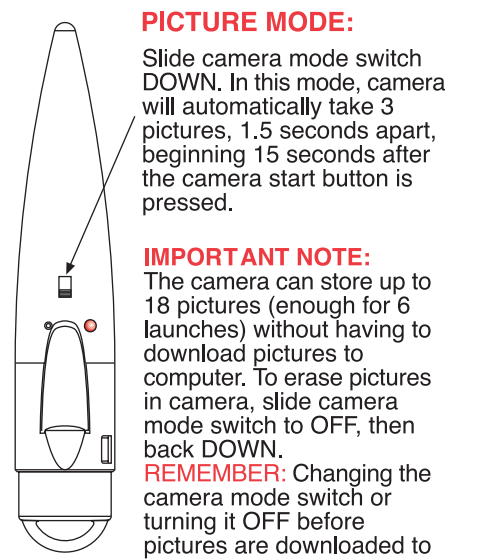
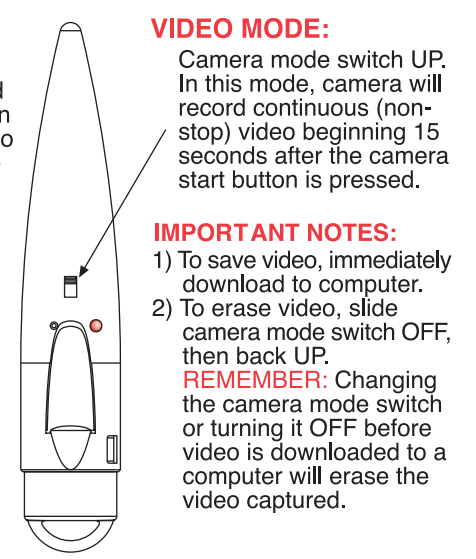
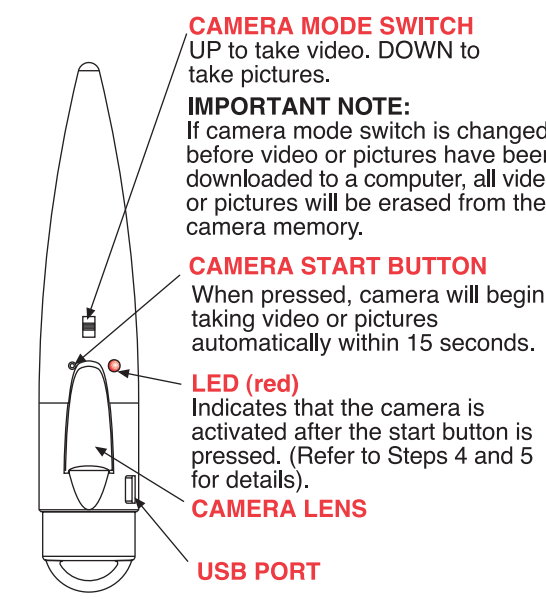
2 LOAD THE SOFTWARE (My DSC 2)

1. Insert CD in CD Drive. **IMPORTANT:** Close other programs before installation. You will need to restart your computer after installation.



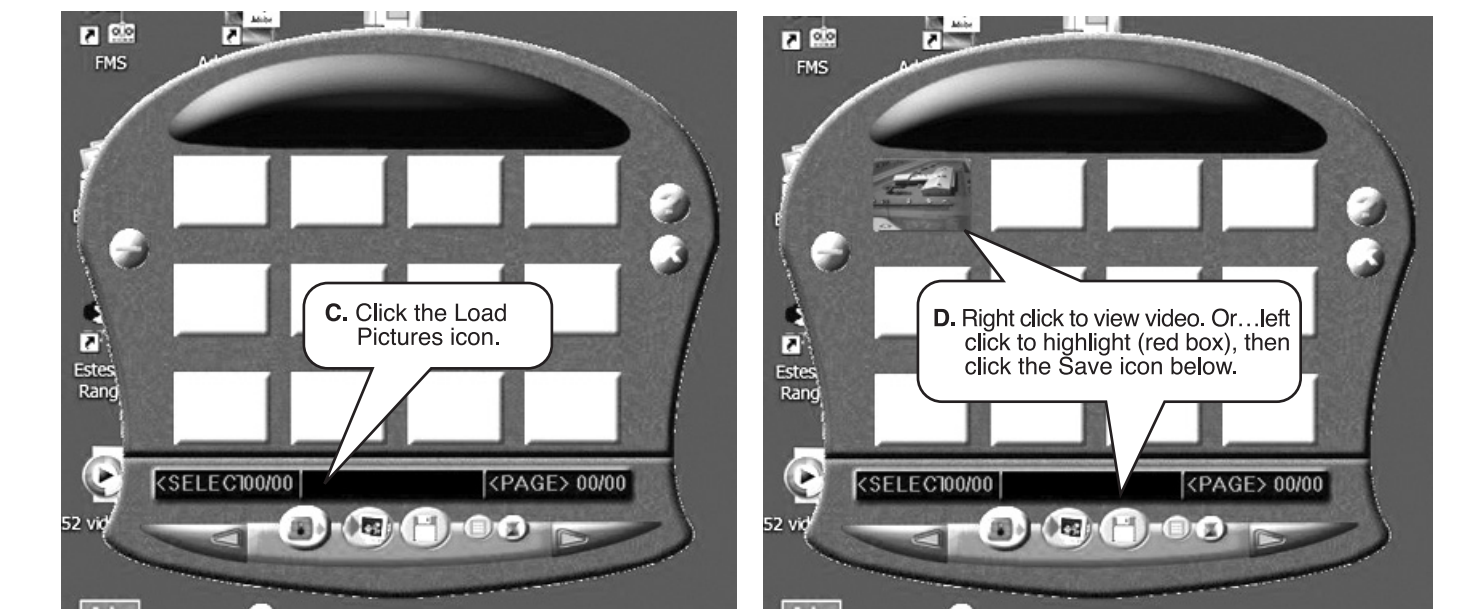
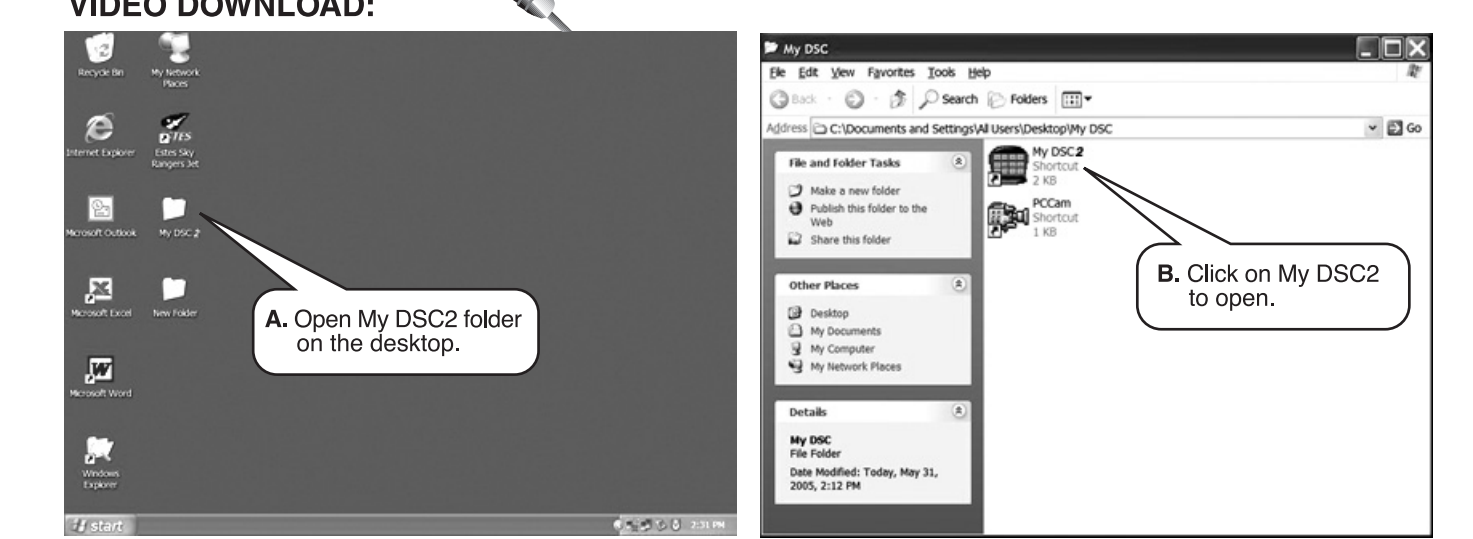
3 OPERATING THE CAMERA NOSE CONE

ASTRO VISION™ NOSE CONE:



4 VIDEO TEST

1. Test the video mode by sliding the camera mode switch UP.
2. Read how the LED operates below. Press the start button (refer to A). When the LED begins flashing rapidly (refer to B), move the camera around to capture a test video until the LED flashes slowly (refer to C).
3. Connect the nose cone to your computer using the included USB cable. Download the video as noted below. After you have successfully completed the video test of the camera nose cone, switch camera OFF and proceed to picture test.



5 PICTURE TEST

1. Test the picture mode by sliding camera mode switch DOWN.
2. Read how the LED operates below. Press start button (refer to A). When the LED stops flashing the camera will take 3 pictures, 1.5 seconds apart. Move the camera position each time the LED turns on (refer to B & C).
3. Connect the camera nose cone to your computer using the included USB cable. Download the pictures as noted below. After you have successfully completed the picture test of the camera nose cone, switch camera OFF and proceed to prepare your rocket for launch.

