

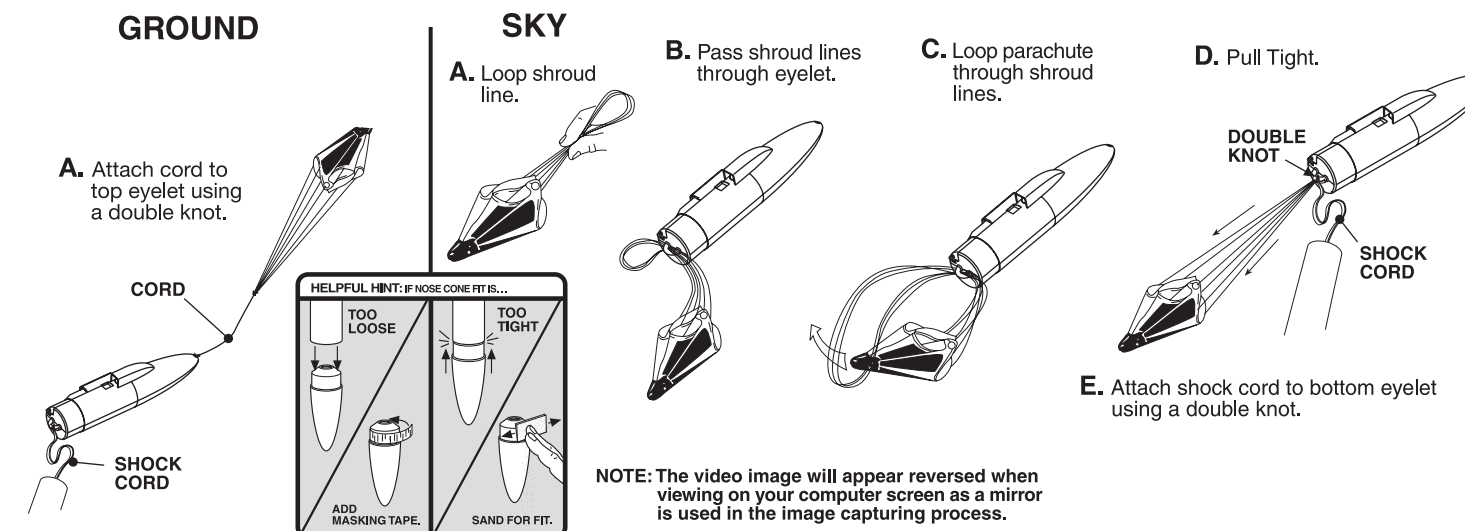
6. ATTACH PARACHUTE & SHOCK CORD

If you'd like to capture video of the GROUND as the rocket descends, attach a piece of braided cord about 12" long (not included) to the top eyelet and then attach the parachute to the other end of the cord. Pack the parachute in the body tube as normal and run the cord along the side of the nose cone.

NOTE: There are two ways to attach the parachute depending on the images you would like to see during the recovery phase.

OR

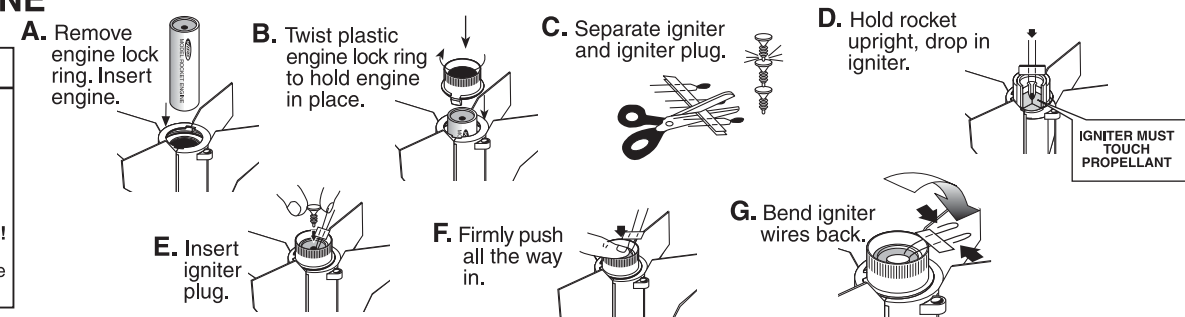
If you'd like to shoot the SKY and parachute during recovery, then attach the parachute to the bottom of the nose cone as shown below.



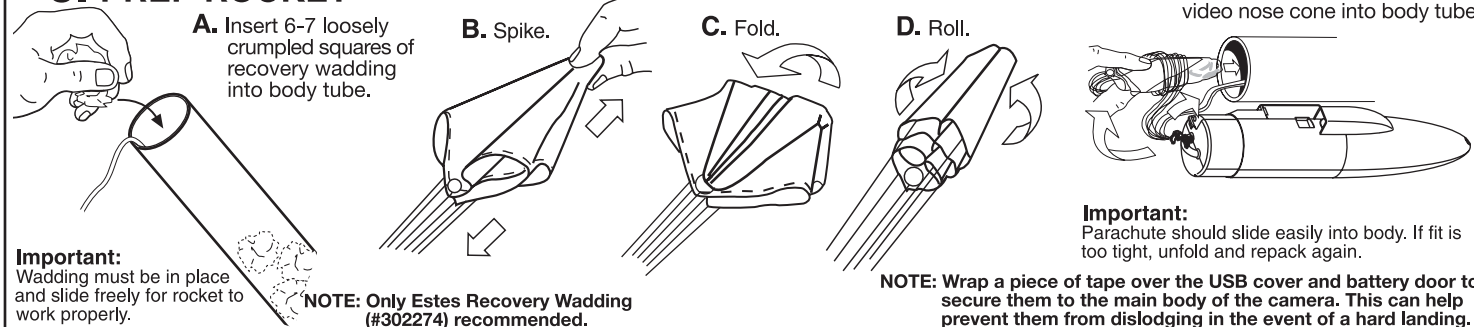
7. PREP ENGINE

WARNING: FLAMMABLE

To avoid serious injury, read instructions & NAR Safety Code included with engines. PREPARE YOUR ENGINE ONLY WHEN YOU ARE OUTSIDE AT THE LAUNCH SITE PREPARING TO LAUNCH! If you do not use your prepared engine, remove the igniter before storing your engine.



8. PREP ROCKET



Experiment and have fun with your Oracle™ video rocket!

If you really want to capture the liftoff phase, wait a second or two AFTER the green LED has stopped blinking before launching the rocket. This way the video camera will be running before the rocket lifts off the pad.

If you really want to capture the recovery and landing phase, launch the rocket BEFORE the green LED has stopped blinking. This way the rocket will be in the air when the video camera starts running, allowing for more time of the recovery phase to be recorded.

For additional fun away from the launch site, you can use the Oracle™ as a stand-alone video camera. Simply detach the shock cord and parachute from the nose cone and operate it normally. Video your pets, your family or your friends.

TROUBLESHOOTING

RED LED DOES NOT LIGHT WHEN POWER SWITCH IS "ON".

- 1) Low Battery - Replace battery with a new "AAA" alkaline battery.
- 2) Battery installed incorrectly, check polarity.

AVI FILE TAKES A LONG TIME TO DOWNLOAD

The speed at which the .avi file is downloaded is dependent on the computer you are using. A faster computer will download the file quicker.

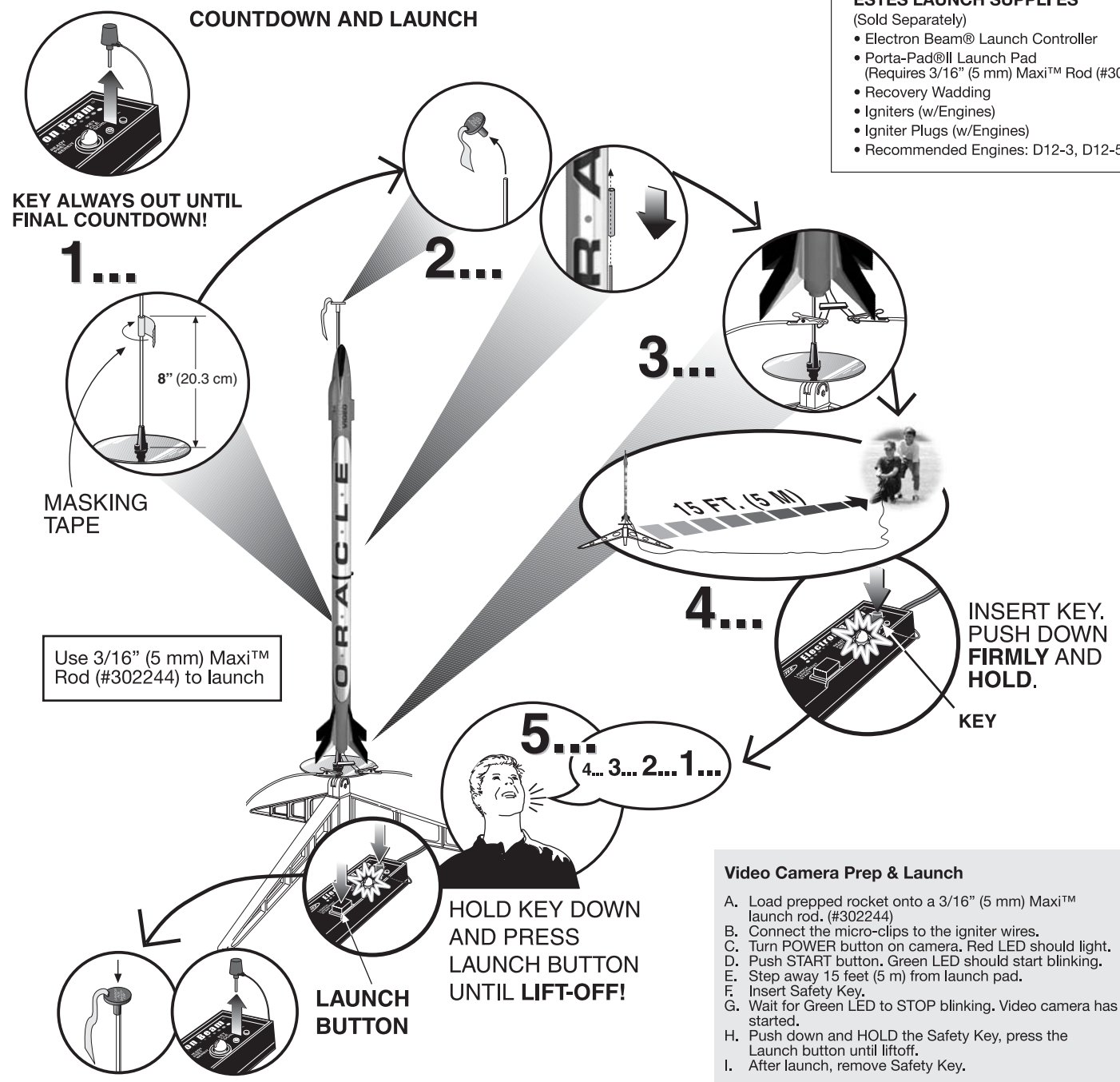
COMPUTER DOES NOT RECOGNIZE CAMERA AFTER SOFTWARE HAS BEEN INSTALLED.

Run the Un-install Wizard. Then reinstall the software.

ENGINE MISFIRE

See page 6 for MISFIRES.

COUNTDOWN AND LAUNCH



ESTES LAUNCH SUPPLIES

- (Sold Separately)
- Electron Beam® Launch Controller
 - Porta-Pad®II Launch Pad (Requires 3/16" (5 mm) Maxi™ Rod (#302244))
 - Recovery Wadding
 - Igniters (w/Engines)
 - Igniter Plugs (w/Engines)
 - Recommended Engines: D12-3, D12-5

PRECAUTIONS



PRE-LAUNCH CHECK

For safety, never launch a damaged rocket. Check the rocket's body, nose cone and fins. Also, check the engine mount, recovery system and launch lug(s). Repair any damage before launching the rocket.

FLYING YOUR ROCKET

Choose a large field (500 ft. [152 m] square) free of dry weeds and brown grass. The larger the launch area, the better your chance of recovering your rocket. Football fields and playgrounds are great. Launch only with little or no wind and good visibility. Always follow the National Association of Rocketry (NAR) Safety Code.

MISFIRES

TAKE THE KEY OUT OF THE CONTROLLER. WAIT ONE MINUTE BEFORE GOING NEAR THE ROCKET! Disconnect the igniter clips and remove engine. Take the plug and igniter out of the engine. If the igniter has burned, it worked but did not ignite the engine because it was not touching the propellant inside the engine. Put a new igniter all the way inside the engine without bending it. Push the plug in place. Repeat the steps under Countdown and Launch.



www.estesrockets.com

Estes Industries
1295 H Street
Penrose, CO 81240

Printed in China

ASSEMBLY TIP

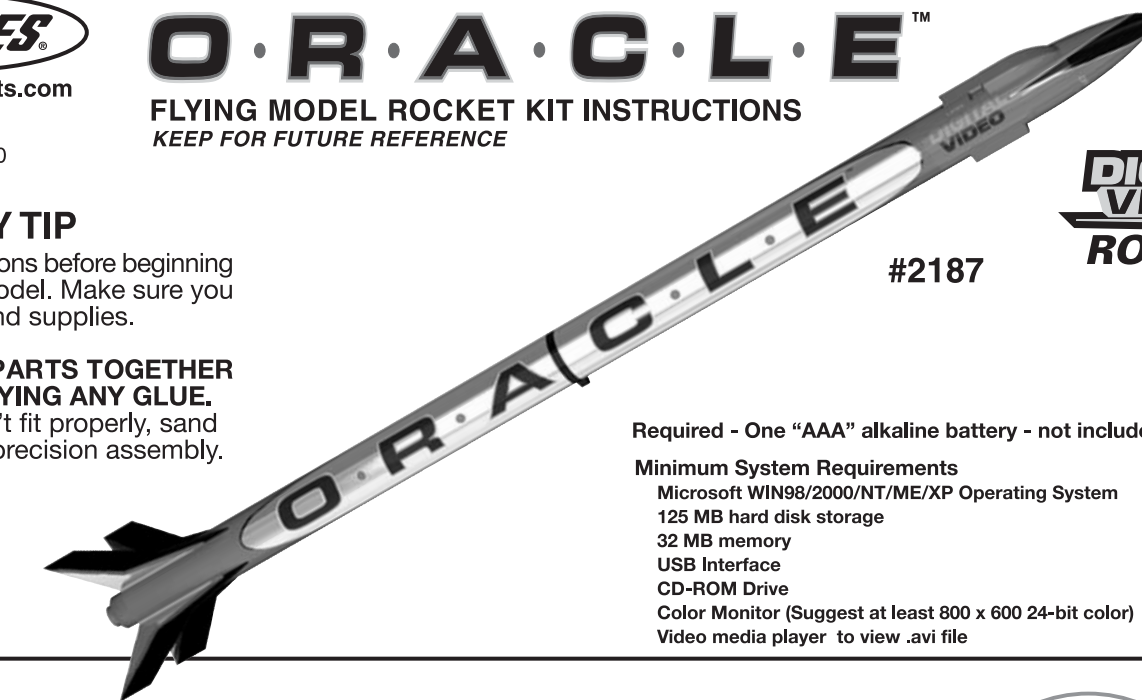
Read all instructions before beginning work on your model. Make sure you have all parts and supplies.

TEST-FIT ALL PARTS TOGETHER BEFORE APPLYING ANY GLUE.

If any parts don't fit properly, sand as required for precision assembly.

O·R·A·C·L·E™

FLYING MODEL ROCKET KIT INSTRUCTIONS
KEEP FOR FUTURE REFERENCE



DIGITAL VIDEO ROCKET

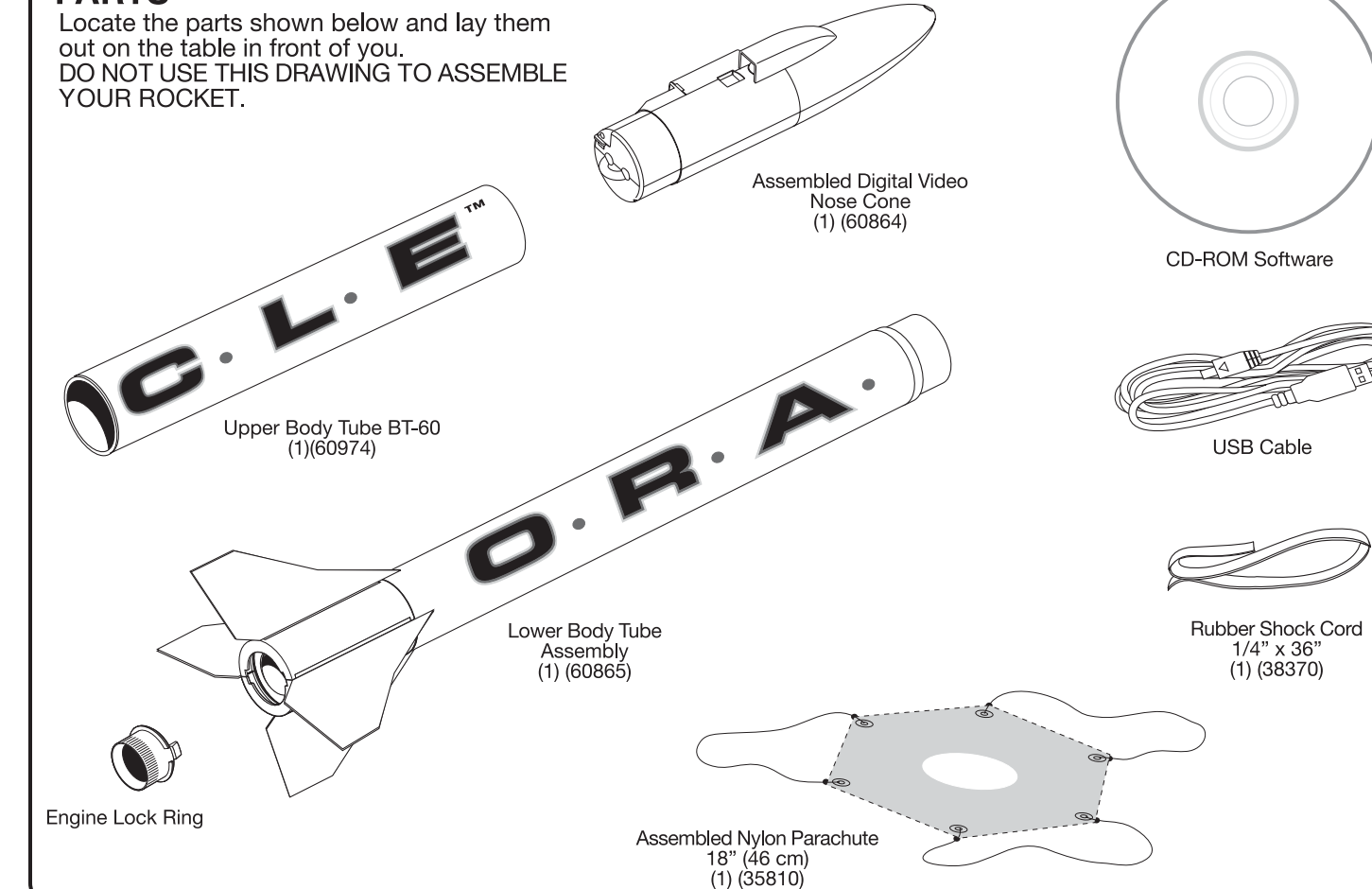
Required - One "AAA" alkaline battery - not included

Minimum System Requirements

- Microsoft WIN98/2000/NT/ME/XP Operating System
- 125 MB hard disk storage
- 32 MB memory
- USB Interface
- CD-ROM Drive
- Color Monitor (Suggest at least 800 x 600 24-bit color)
- Video media player to view .avi file

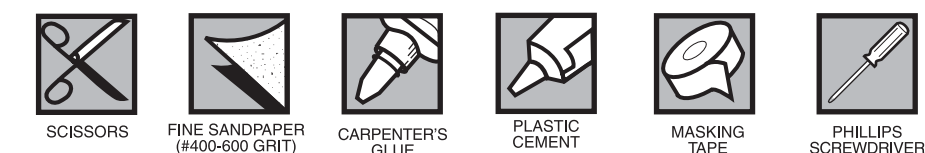
PARTS

Locate the parts shown below and lay them out on the table in front of you. DO NOT USE THIS DRAWING TO ASSEMBLE YOUR ROCKET.



SUPPLIES

In addition to the parts included in the kit you will also need:

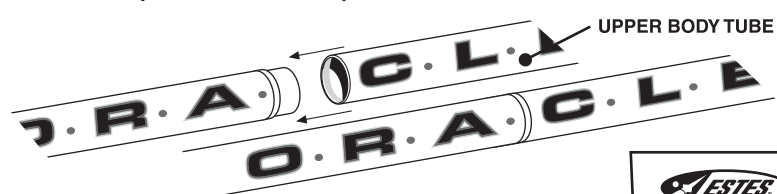


1. ATTACH UPPER BODY TUBE

A. Apply a ring of plastic cement inside upper body tube as shown. Be careful to note which end to apply the plastic cement.



B. Slide upper body tube onto tube coupler. Rotate upper body tube to align the body tube decals. Let dry.



SECTION 3

SECTION 2

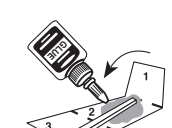
SECTION 1

2. INSTALL SHOCK CORD MOUNT

A. Cut out shock cord mount to the right.



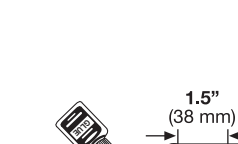
B. Apply glue. Fold forward.



C. Apply glue. Fold forward.



D. Squeeze tightly and hold for one minute.



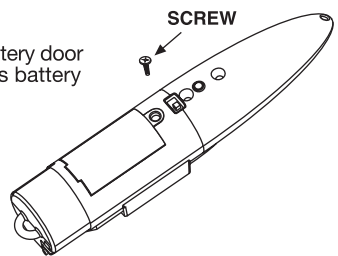
E. Glue mount 1.5" (38 mm) inside front body tube. Hold until glue sets. Let dry.



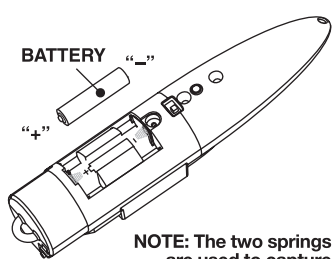
NO

3. INSTALL BATTERY

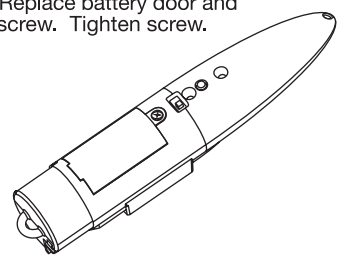
A. Remove screw from battery door on nose cone to access battery compartment.



B. Install one "AAA" alkaline battery. BE SURE TO NOTE POLARITY.



C. Replace battery door and screw. Tighten screw.



NOTE: The two springs are used to capture the battery so that it maintains contact with the terminals during flight.

Battery Warning

- Do not use rechargeable batteries in unit.
- Only one "AAA" alkaline battery recommended.
- Remove old or dead battery.
- Do not place battery in fire.
- Remove the battery if unit will be stored for long periods of time.

4. INSTALL SOFTWARE

Important: Close other programs before installation.

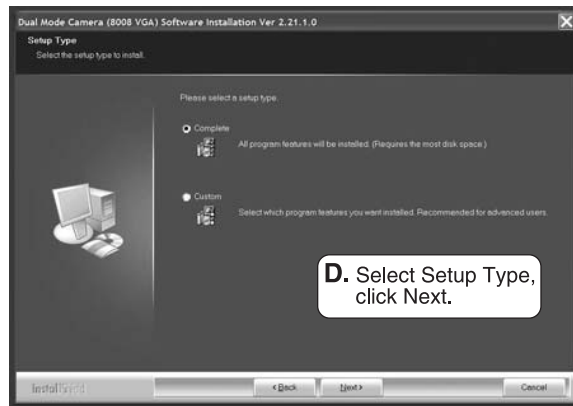
Important: If your operating system is WIN98, you must first run *DirectX 8.1b Redist Package.EXE* BEFORE you set up the driver for the digital camera. This executable file is located on the Oracle software CD in the DirectX folder.



A. Insert CD into the CD-ROM drive.
B. Click Install DC Driver.



C. At the Welcome screen, click Next.



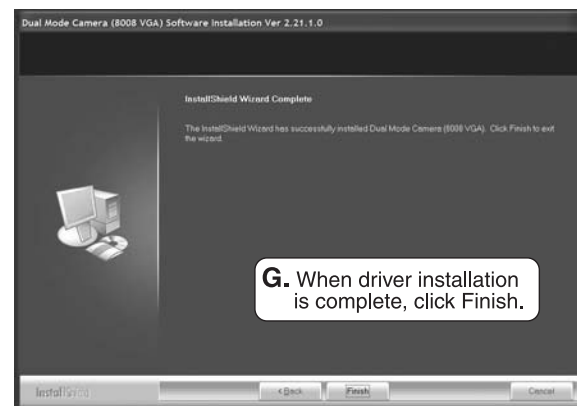
D. Select Setup Type, click Next.



F. If warning pops up, click Continue Anyway.



E. Click Install.

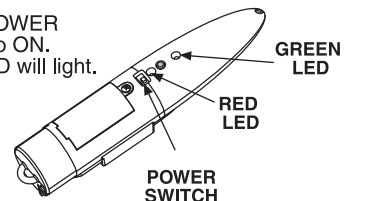


G. When driver installation is complete, click Finish.

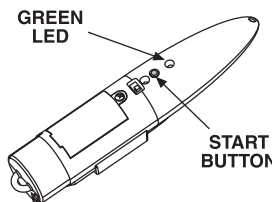
IMPORTANT: To complete the software installation and new hardware recognition, keep the CD in the computer and complete Step 5. It is recommended that you complete Step 5 before your first launch.

5. TEST VIDEO NOSE CONE

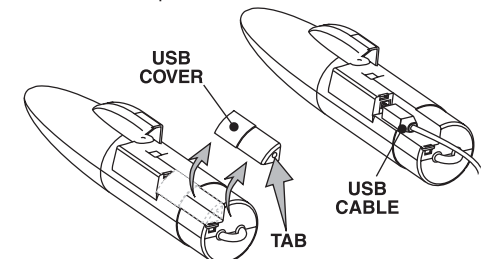
A. Slide POWER switch to ON. Red LED will light.



B. Press START button. The Green LED will start blinking. When Green LED stops blinking, the video camera will start taking pictures.



C. Push tab in gently and remove USB cover on nose cone. Connect the USB cable to the connector on the nose cone and the other end to the computer.



ATTENTION: Do not connect the video nose cone to the computer until the software is installed.

NOTE: Ensure battery has been installed correctly and battery door is secured before operating video nose cone.

IMPORTANT: When the POWER switch is turned "OFF" or if battery power is interrupted, the video stored in memory will be deleted and there is no method to recover it.

The camera stores one video sequence in its memory. In order to shoot another video, you should first save the current video to your computer. After the video is saved, turn the POWER switch "OFF" for one minute before shooting again.

NOTE: Once you have pushed the START button and the Green LED starts blinking, you will have 15 seconds to move away from the launch pad and launch the rocket.

IMPORTANT: Do NOT turn the POWER switch OFF after the camera has taken a video. Turning the POWER switch OFF will erase all images stored in memory.

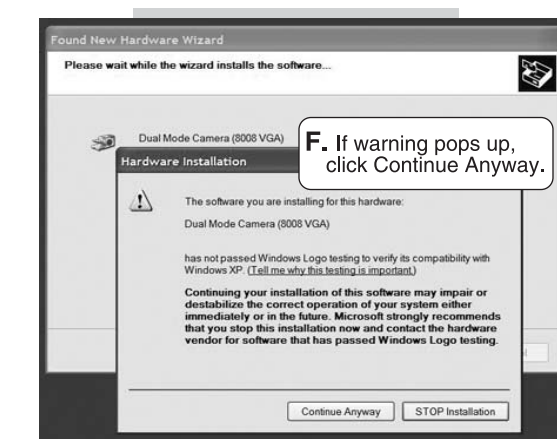
NOTE: The video runs for approximately 30 seconds. After the video sequence has been completed, the unit will go into a sleep mode and the green LED will turn off. This sleep mode helps to conserve battery power. Remember, it is important to keep the Power Switch turned "ON" during this time or you will lose your video!



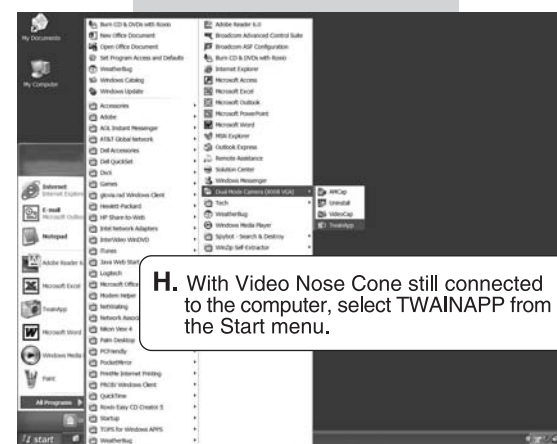
D. Found New Hardware wizard will start, click Next.



E. Make sure the CD is in the computer, click Next.



F. If warning pops up, click Continue Anyway.



H. With Video Nose Cone still connected to the computer, select TWAINAPP from the Start menu.



G. When hardware recognition is complete, click Finish.



I. The computer should recognize the new video camera hardware.



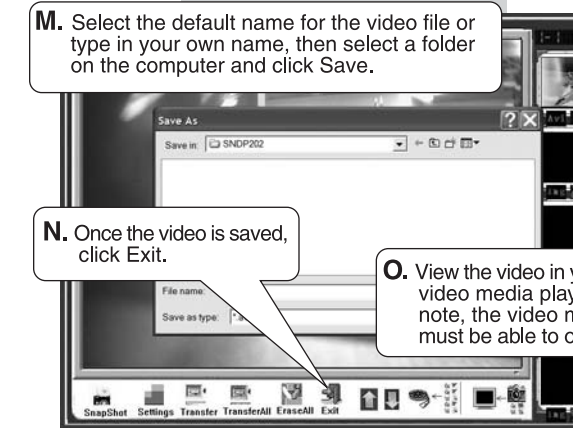
J. A new window will open up showing a live video image. Click on the picture of the camera in the lower right corner to start the Download of the video.



K. The Download of the video from the camera to your computer will start.



L. After the Download, click on the image in the top right corner, then click on Transfer to save the file.



M. Select the default name for the video file or type in your own name, then select a folder on the computer and click Save.

N. Once the video is saved, click Exit.

O. View the video in your preferred video media player. Please note, the video media player must be able to open .avi files.