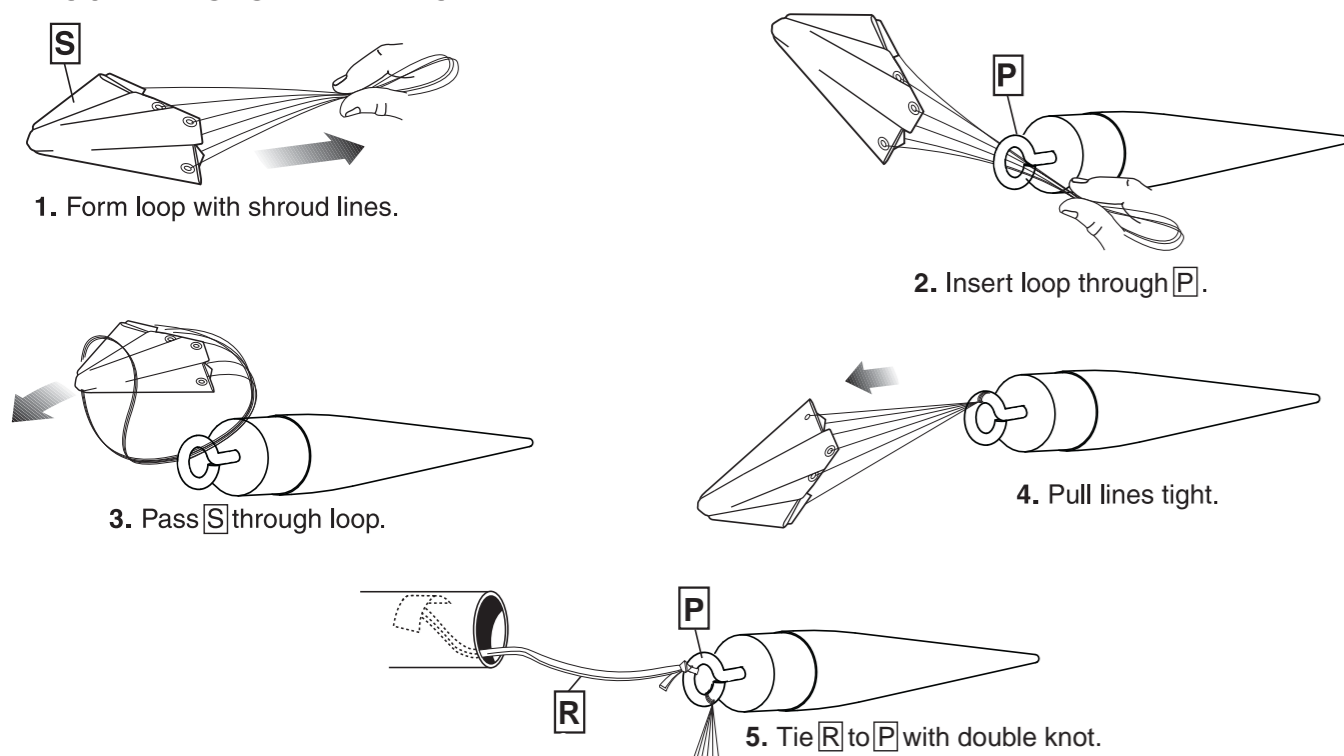


ROCKET FINISHING CONTINUED

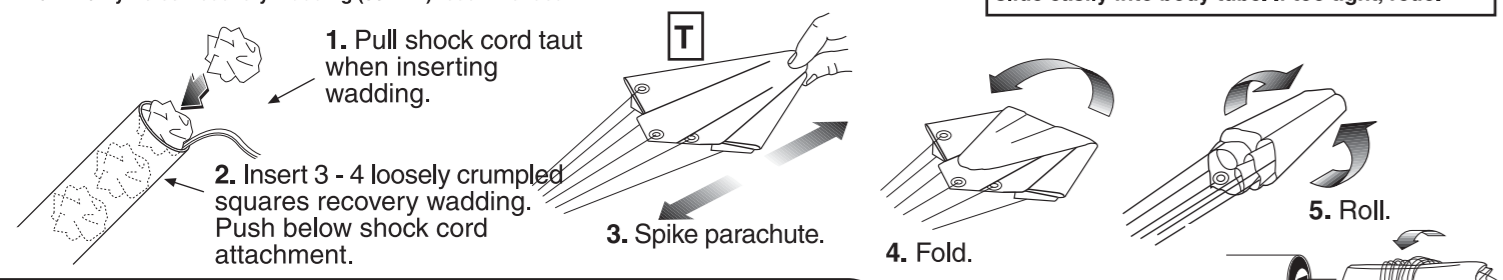
- Remove the entire decal, position in place and slide the decal backing material from under the decal and onto the model as close to final position as possible.
 - Gently blot out excess water with a clean paper towel.
 - Allow decals to set overnight before applying protective clear coat.
- When decals are dry, spray entire rocket (body and nose cone separately) with a light coat of Testors Gloss Lacquer (#1961). This will provide added protection and shine to your Satellite Interceptor™ rocket!

RECOVERY SYSTEM ATTACHMENT



PREPARE FLIGHT RECOVERY

NOTE: Only Estes Recovery Wadding (302274) recommended.

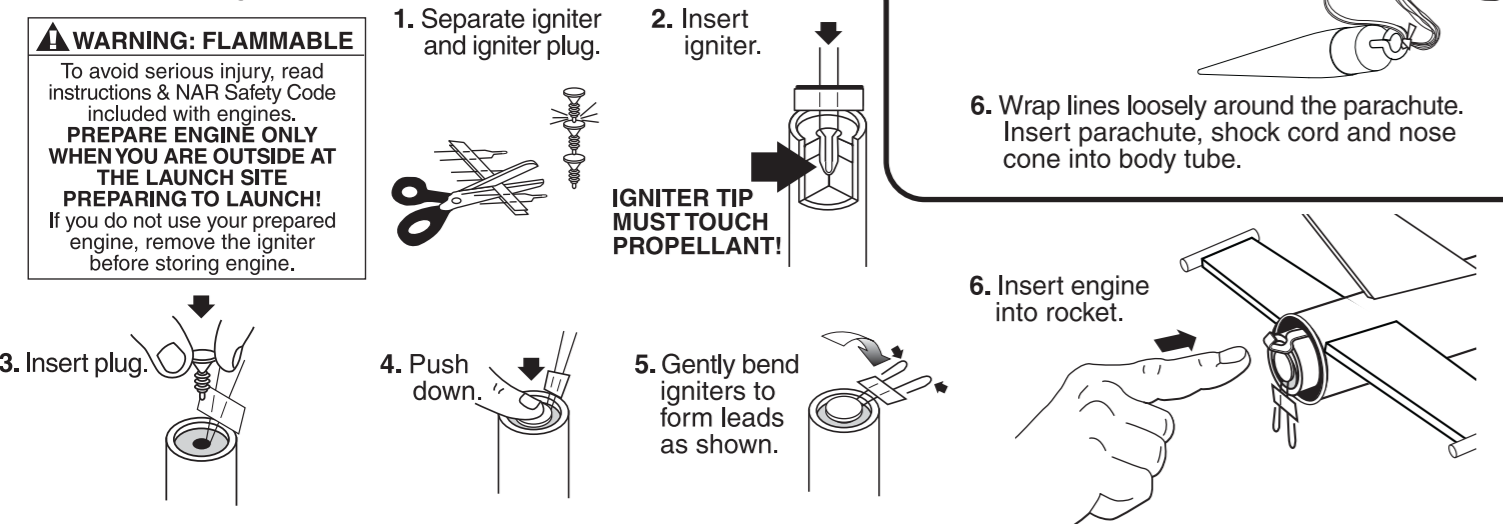


NOTE: Recovery wadding and parachute must slide easily into body tube. If too tight, redo.

PREPARE ENGINE

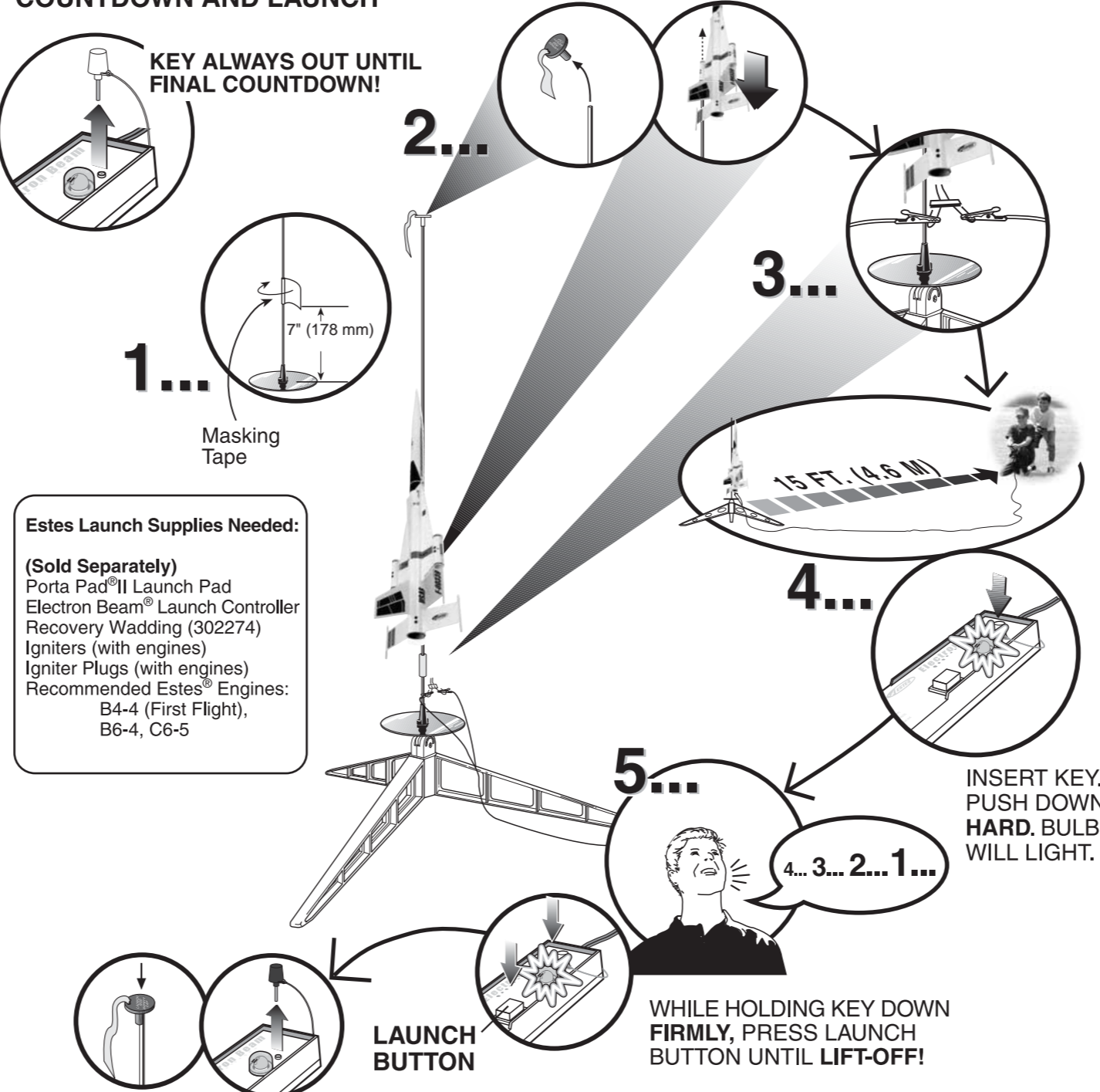
WARNING: FLAMMABLE

To avoid serious injury, read instructions & NAR Safety Code included with engines.
PREPARE ENGINE ONLY WHEN YOU ARE OUTSIDE AT THE LAUNCH SITE PREPARING TO LAUNCH!
 If you do not use your prepared engine, remove the igniter before storing engine.



IGNITER TIP MUST TOUCH PROPELLANT!

COUNTDOWN AND LAUNCH



Estes Launch Supplies Needed:

(Sold Separately)
 Porta Pad® II Launch Pad
 Electron Beam® Launch Controller
 Recovery Wadding (302274)
 Igniters (with engines)
 Igniter Plugs (with engines)
 Recommended Estes® Engines:
 B4-4 (First Flight),
 B6-4, C6-5

PRECAUTIONS



PRE-LAUNCH CHECK

For safety, never launch a damaged rocket. Check the rocket's body, nose cone and fins. Also, check the engine mount, recovery system and launch lug. Repair any damage before launching the rocket.

FLYING YOUR ROCKET

Choose a large field (500 ft. [152 m] square) free of dry weeds and brown grass. The larger the launch area, the better your chance of recovering your rocket. Football fields and playgrounds are great. Launch only with little or no wind and good visibility.

Always follow the enclosed National Association of Rocketry (NAR) SAFETY CODE.

MISFIRES

TAKE THE KEY OUT OF THE CONTROLLER, WAIT ONE MINUTE BEFORE GOING NEAR THE ROCKET! Disconnect the igniter clips and remove the engine. Take the plug and igniter out of the engine. If the igniter has burned, it worked but did not ignite the engine because it was not touching the propellant inside the engine. Put a new igniter all the way inside the engine without bending it. Push the plug in place. Repeat the steps under Countdown and Launch.



SATELLITE INTERCEPTOR™

#3027

FLYING MODEL ROCKET KIT INSTRUCTIONS
 KEEP FOR FUTURE REFERENCE

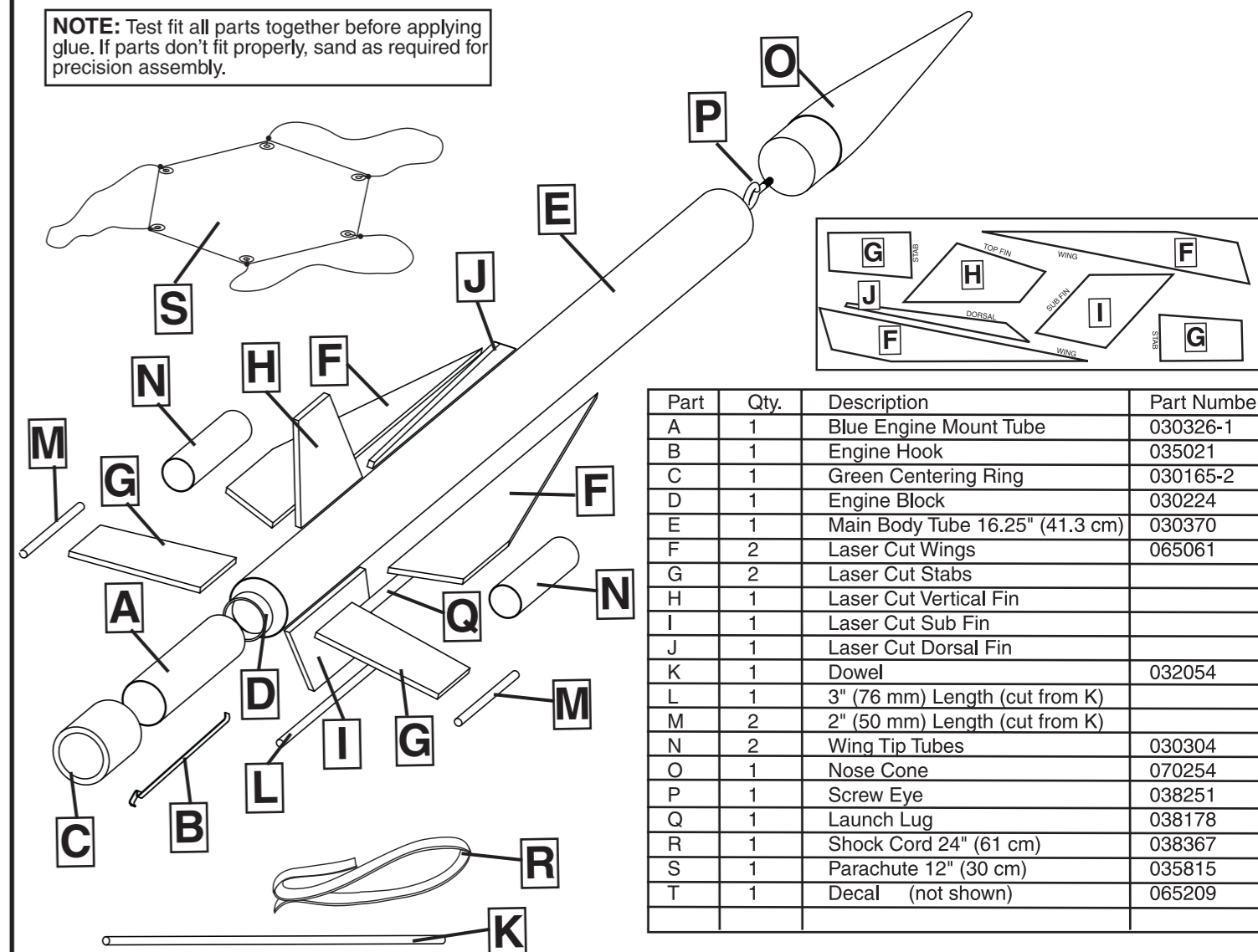
Estes-Cox Corp.
 1295 H Street, PO Box 227
 Penrose, CO 81240-0227
 Printed in CHINA



ASSEMBLY TIP: Read all instructions before beginning work on your model. Make sure you have all parts and supplies.

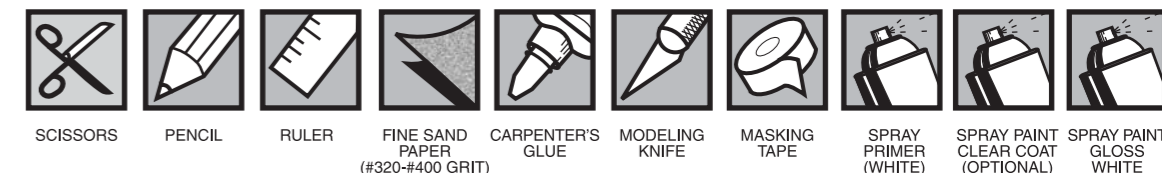
www.estesrockets.com

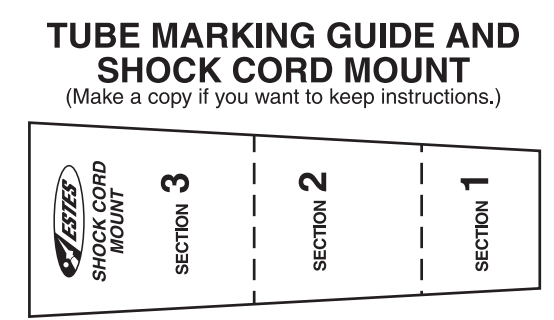
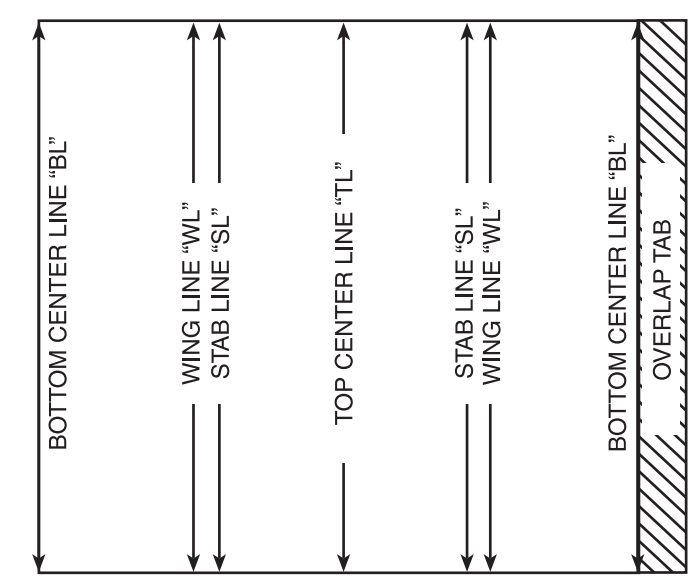
NOTE: Test fit all parts together before applying glue. If parts don't fit properly, sand as required for precision assembly.



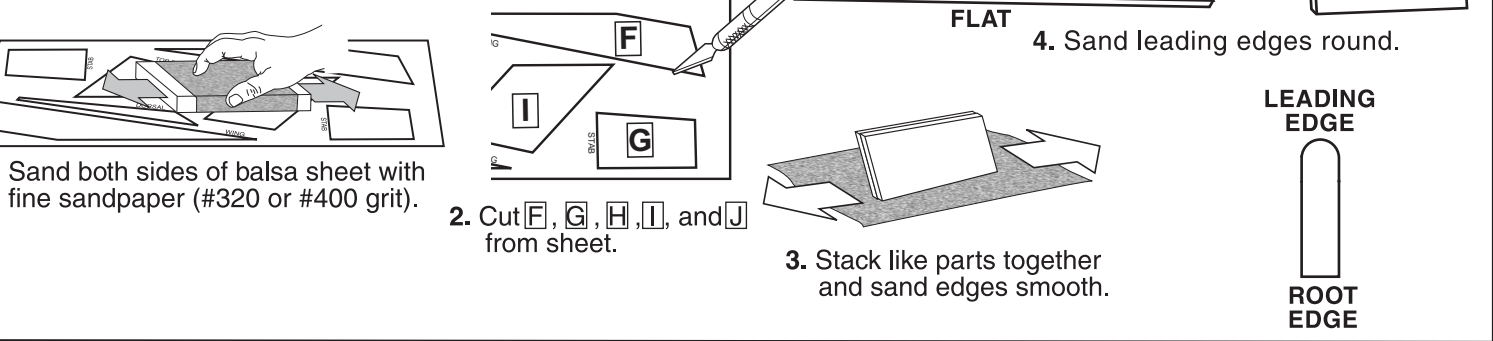
Part	Qty.	Description	Part Number
A	1	Blue Engine Mount Tube	030326-1
B	1	Engine Hook	035021
C	1	Green Centering Ring	030165-2
D	1	Engine Block	030224
E	1	Main Body Tube 16.25" (41.3 cm)	030370
F	2	Laser Cut Wings	065061
G	2	Laser Cut Stabs	
H	1	Laser Cut Vertical Fin	
I	1	Laser Cut Sub Fin	
J	1	Laser Cut Dorsal Fin	
K	1	Dowel	032054
L	1	3" (76 mm) Length (cut from K)	
M	2	2" (50 mm) Length (cut from K)	
N	2	Wing Tip Tubes	030304
O	1	Nose Cone	070254
P	1	Screw Eye	038251
Q	1	Launch Lug	038178
R	1	Shock Cord 24" (61 cm)	038367
S	1	Parachute 12" (30 cm)	035815
T	1	Decal (not shown)	065209

SUPPLIES In addition to the parts included in the kit you will also need:

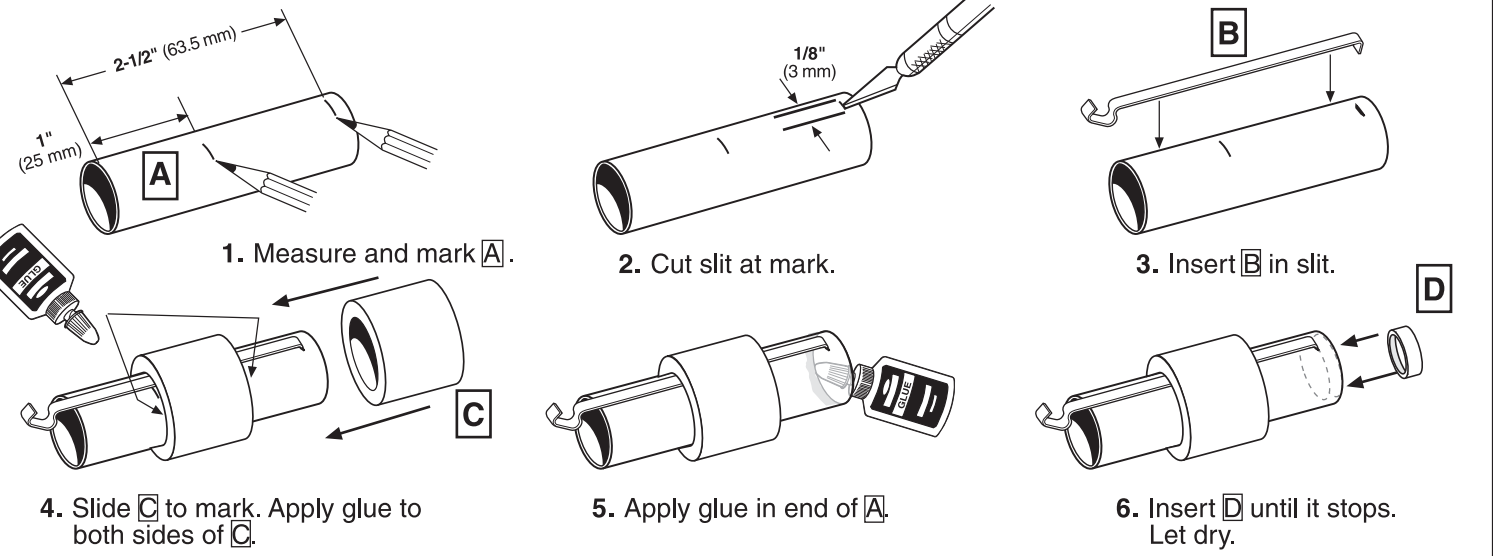




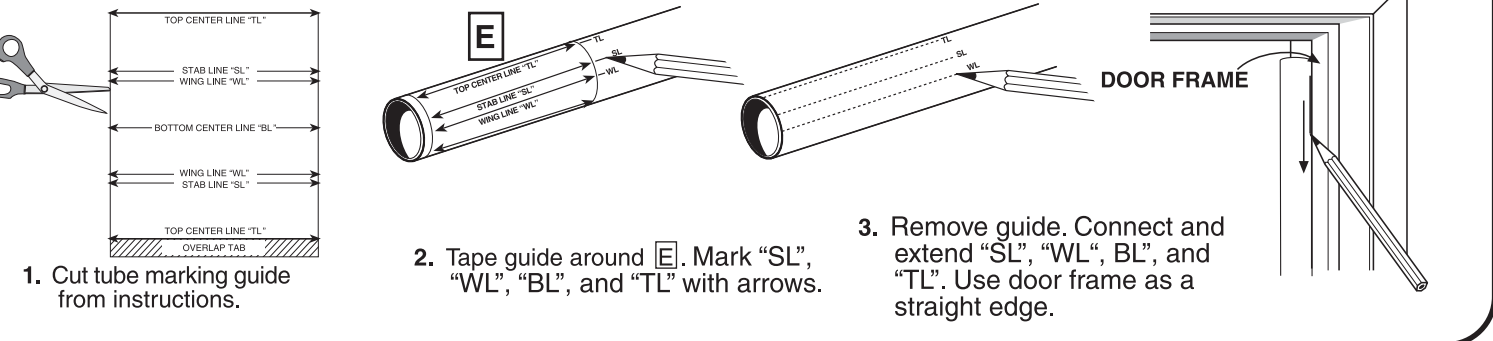
FIN PREPARATION



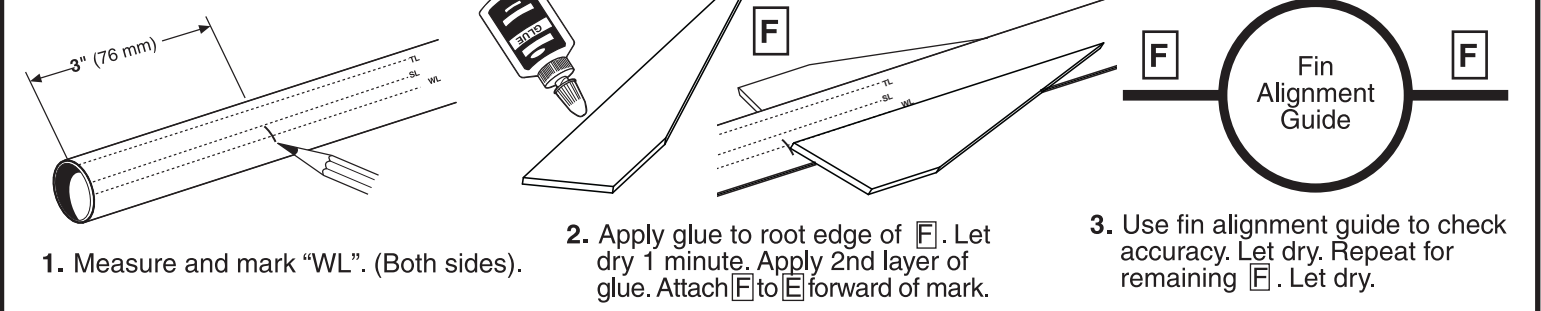
ENGINE MOUNT ASSEMBLY



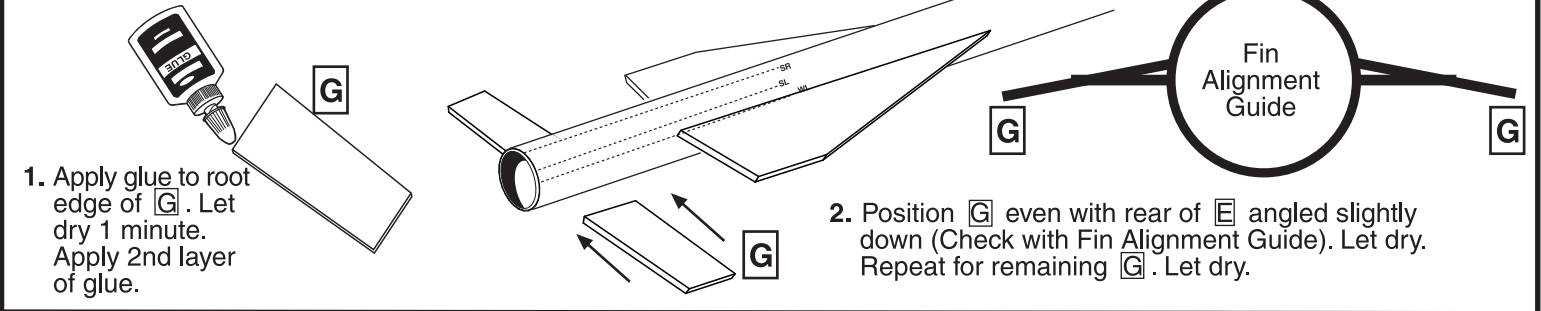
TUBE MARKING



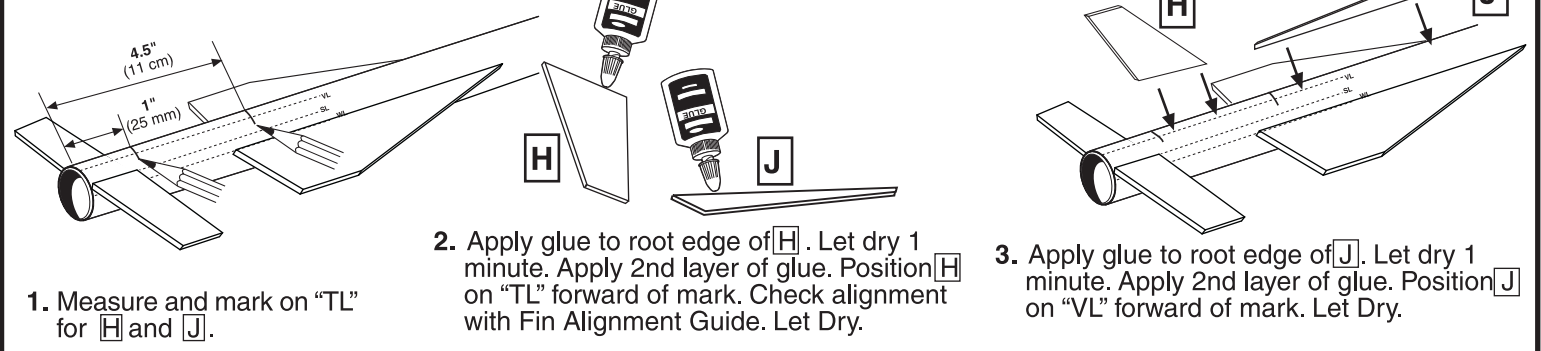
WING ATTACHMENT



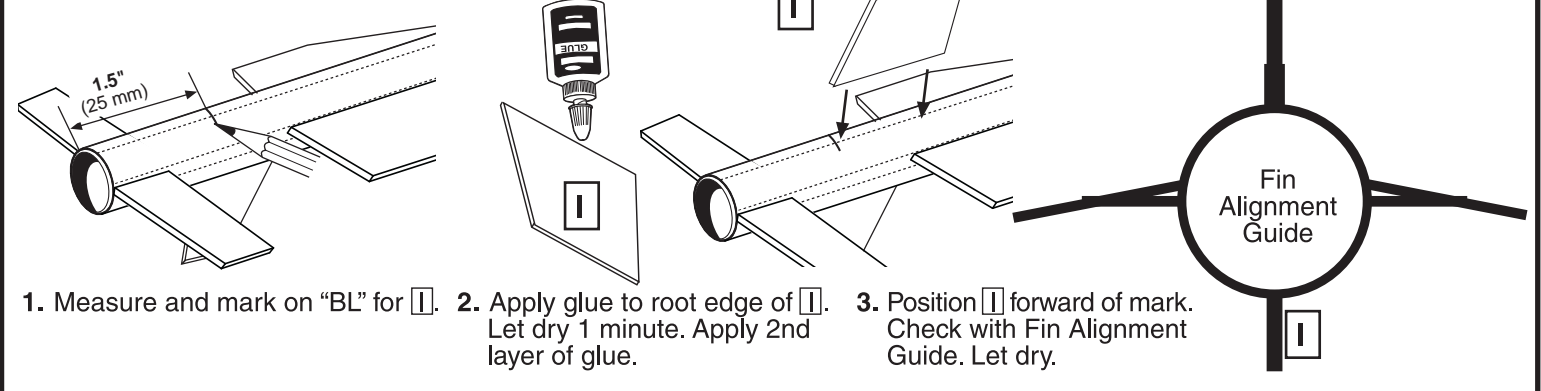
STAB ATTACHMENT



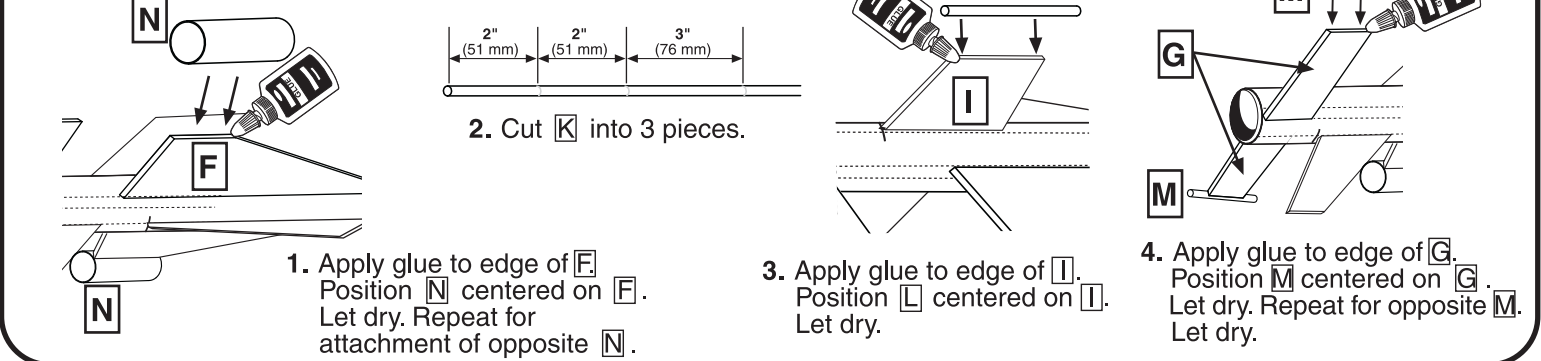
VERTICAL FIN ATTACHMENT



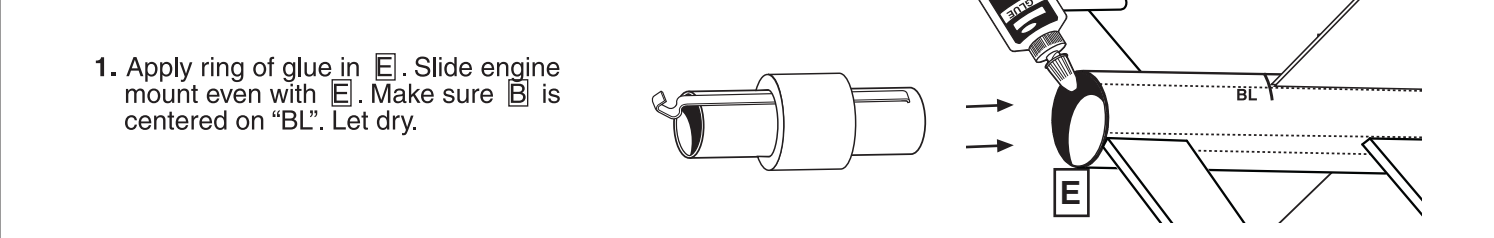
SUB FIN ATTACHMENT



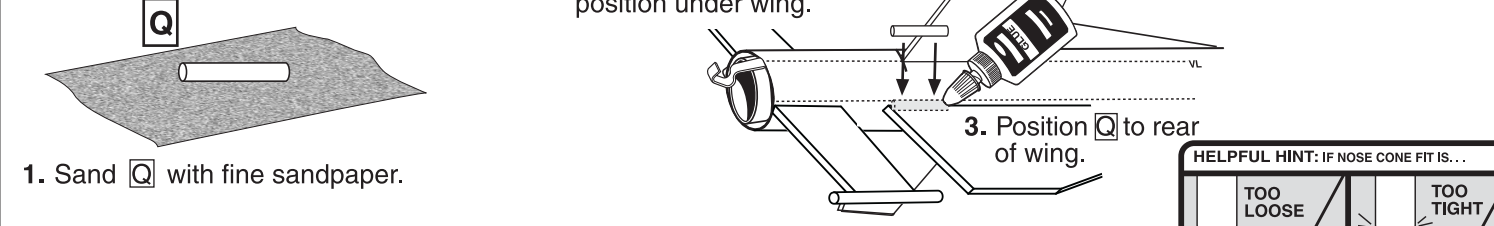
WING TUBE AND DOWEL ATTACHMENT



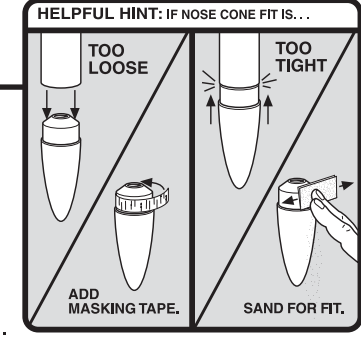
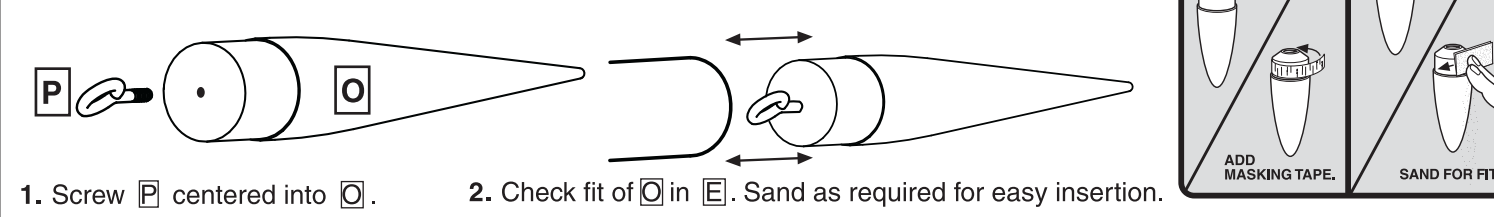
ENGINE MOUNT ATTACHMENT



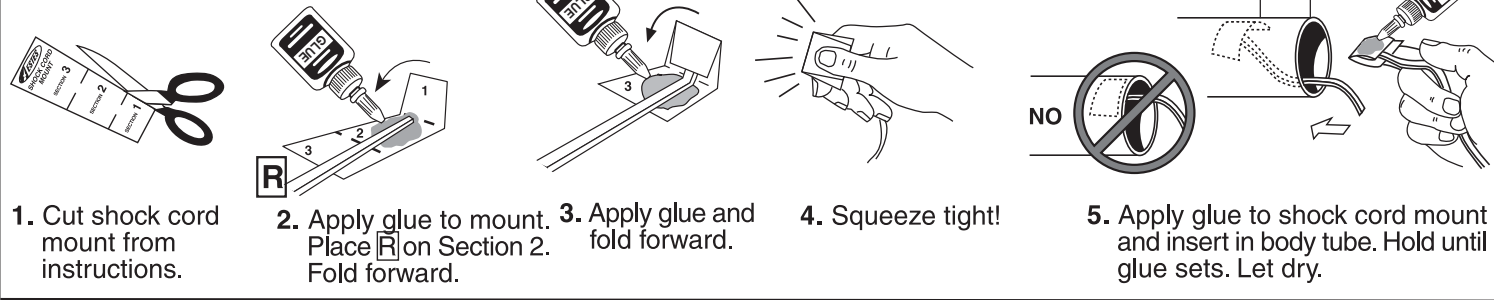
LAUNCH LUG ATTACHMENT



NOSE CONE ASSEMBLY



SHOCK CORD INSTALLATION



ROCKET FINISHING

NOTE: We have found Testors spray primers (Testors #2948 White Primer), Testors One Coat Lacquer spray paints (color of your choice), Testors Model Master spray paints (color of your choice) and Testors Gloss Lacquer (#1961) to be excellent for providing a long lasting and durable finish on your rocket. Always be sure to spray your models outside or in a well ventilated area.

Steps for a Quality Finish:

- Insert shock cord into body tube and hold in place with paper.
- Lightly sand body tube, fins and nose cone with fine sandpaper (#320 or #400 grit).
- Apply glue fillets to fins and launch lug.
 - Allow glue to dry overnight.
- Use a stick inserted into the engine tube end of the rocket for painting.
- Hold the nose cone by the screw eye with a clip or pliers for painting.
- We recommend a good filler/primer to be applied to the balsa fins and nose cone before painting.
- Apply 1-2 light coats of white primer to rocket body and nose cone, lightly sanding with fine sandpaper (#320 or #400 grit) between coats.
- Apply gloss white paint in light coats and allow paint to dry between each coat.
 - After final color coat, let the paint dry overnight (24 hours is best).
- Apply waterslide decals where shown.
 - Cut the decal to be applied from the decal sheet, trimming close to the decal edge.
 - Hold the decal in warm water until decal begins to curl.



CONTINUED NEXT PAGE