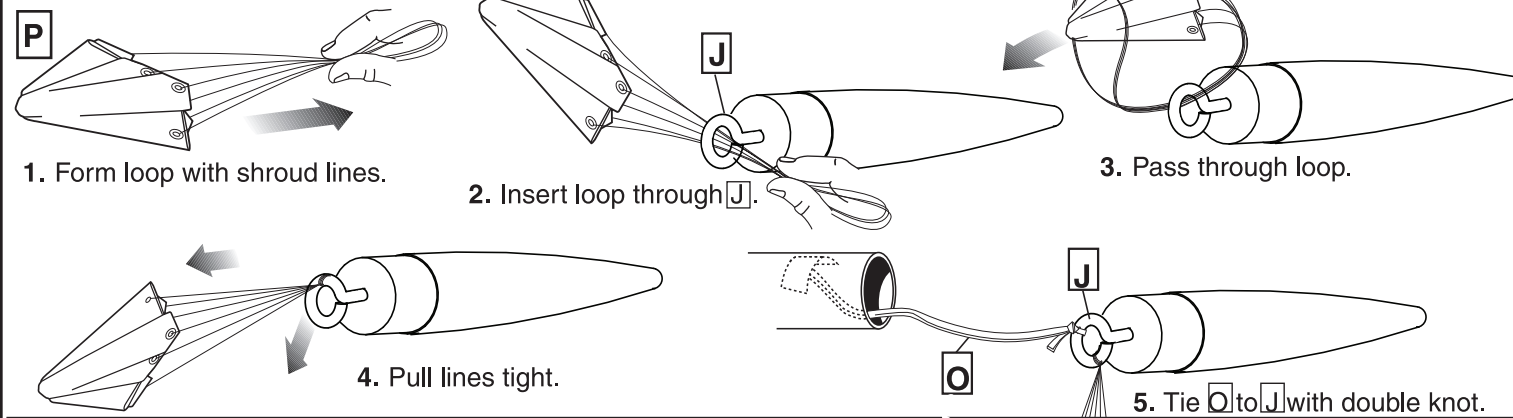


CONTINUED FROM PAGE 4

- a. Let dry overnight (24 hours is best).
9. Apply masking tape on vertical fins.
10. Brush Battleship Gray on jet tubes and launch lug.
 - a. Let dry overnight (24 hours is best). Remove masking tape.
11. Spray nose cone silver.
 - a. Let dry overnight (24 hours is best).
12. Apply masking tape and protective cover 1 1/8" (29 mm) down from tip of nose cone.
13. Spray base of nose cone red.
 - a. Let paint dry overnight (24 hours is best). Remove all masking tape.
14. Apply waterslide decals.
 - a. Cut decals to be applied from decal sheet, trimming close to the decal edge.
 - b. Place decal in bowl of warm water until decal begins to curl.
 - c. Remove decal, position in place and slide decal off of backing material and onto the model as close to final position as possible.
 - d. Gently blot excess water with a clean paper towel. Allow decals to set overnight.
 - e. Apply protective clear coat, optional. This will provide added protection and shine to your Equinox™ rocket!

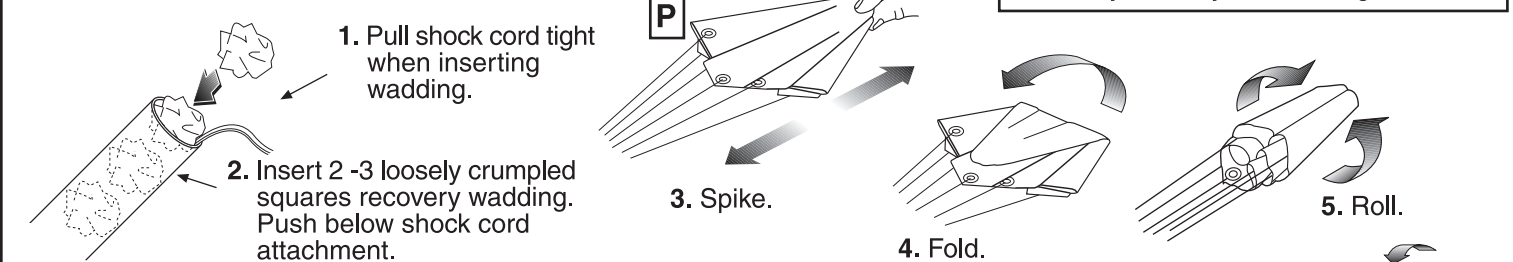


RECOVERY SYSTEM ATTACHMENT



PREPARE FLIGHT RECOVERY

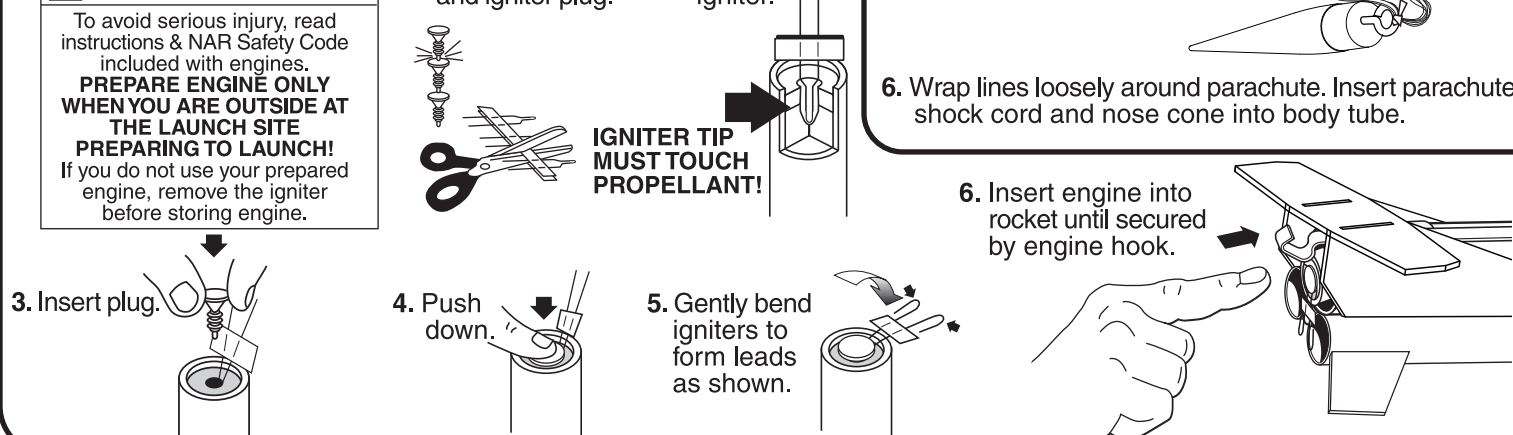
NOTE: Only Estes Recovery Wadding (302274) recommended.



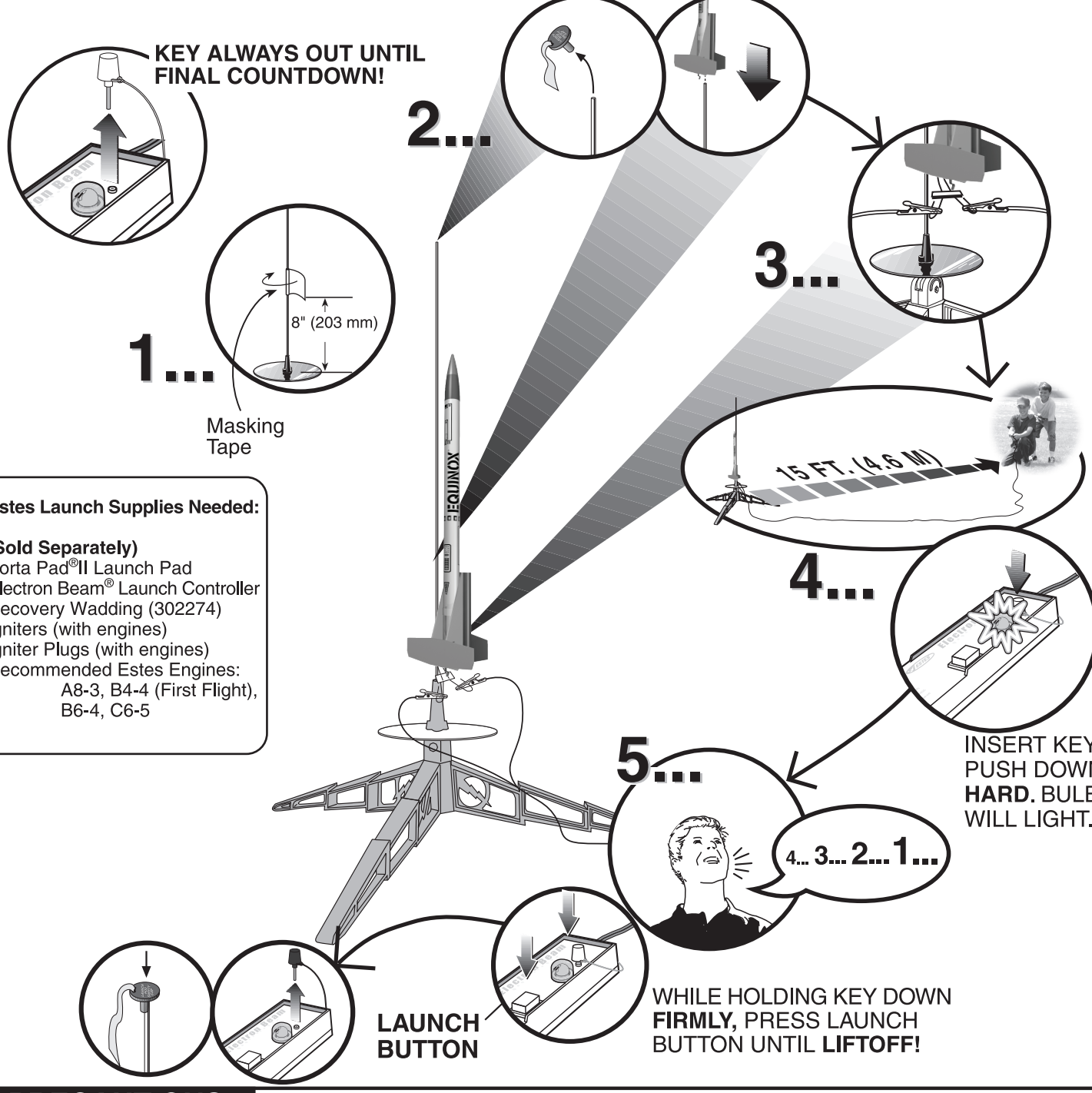
PREPARE ENGINE

WARNING: FLAMMABLE

To avoid serious injury, read instructions & NAR Safety Code included with engines.
PREPARE ENGINE ONLY WHEN YOU ARE OUTSIDE AT THE LAUNCH SITE PREPARING TO LAUNCH!
 If you do not use your prepared engine, remove the igniter before storing engine.

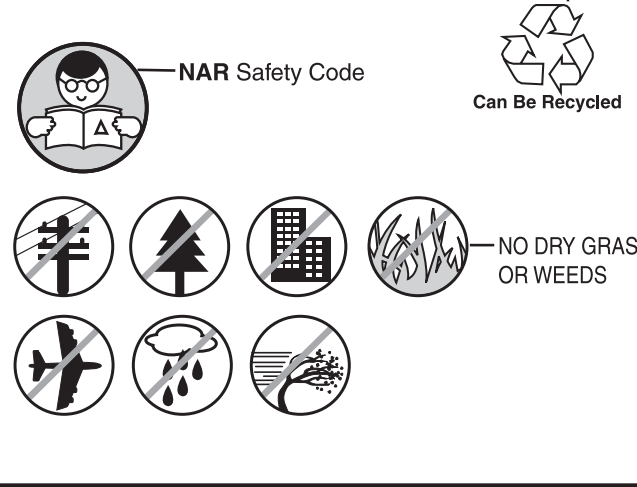


COUNTDOWN AND LAUNCH



Estes Launch Supplies Needed:
 (Sold Separately)
 Porta Pad® II Launch Pad
 Electron Beam® Launch Controller
 Recovery Wadding (302274)
 Igniters (with engines)
 Igniter Plugs (with engines)
 Recommended Estes Engines:
 A8-3, B4-4 (First Flight),
 B6-4, C6-5

PRECAUTIONS



PRE-LAUNCH CHECK

For safety, never launch a damaged rocket. Check the rocket's body, nose cone and fins. Also, check the engine mount, recovery system and launch lug. Repair any damage before launching the rocket.

FLYING YOUR ROCKET

Choose a large field (500 ft. [152 m] square) free of dry weeds and brown grass. The larger the launch area, the better your chance of recovering your rocket. Football fields and playgrounds are great. Launch only with little or no wind and good visibility.

Always follow the enclosed National Association of Rocketry (NAR) SAFETY CODE.

MISFIRES

TAKE THE KEY OUT OF THE CONTROLLER. WAIT ONE MINUTE BEFORE GOING NEAR THE ROCKET! Disconnect the igniter clips and remove the engine. Take the plug and igniter out of the engine. If the igniter has burned, it worked but did not ignite the engine because it was not touching the propellant inside the engine. Put a new igniter all the way inside the engine without bending it. Push the plug in place. Repeat the steps under Countdown and Launch.



Estes-Cox Corp.
 1295 H Street, PO Box 227
 Penrose, CO 81240-0227
 Printed in Guangdong, China

EQUINOX™

FLYING MODEL ROCKET KIT INSTRUCTIONS
 KEEP FOR FUTURE REFERENCE

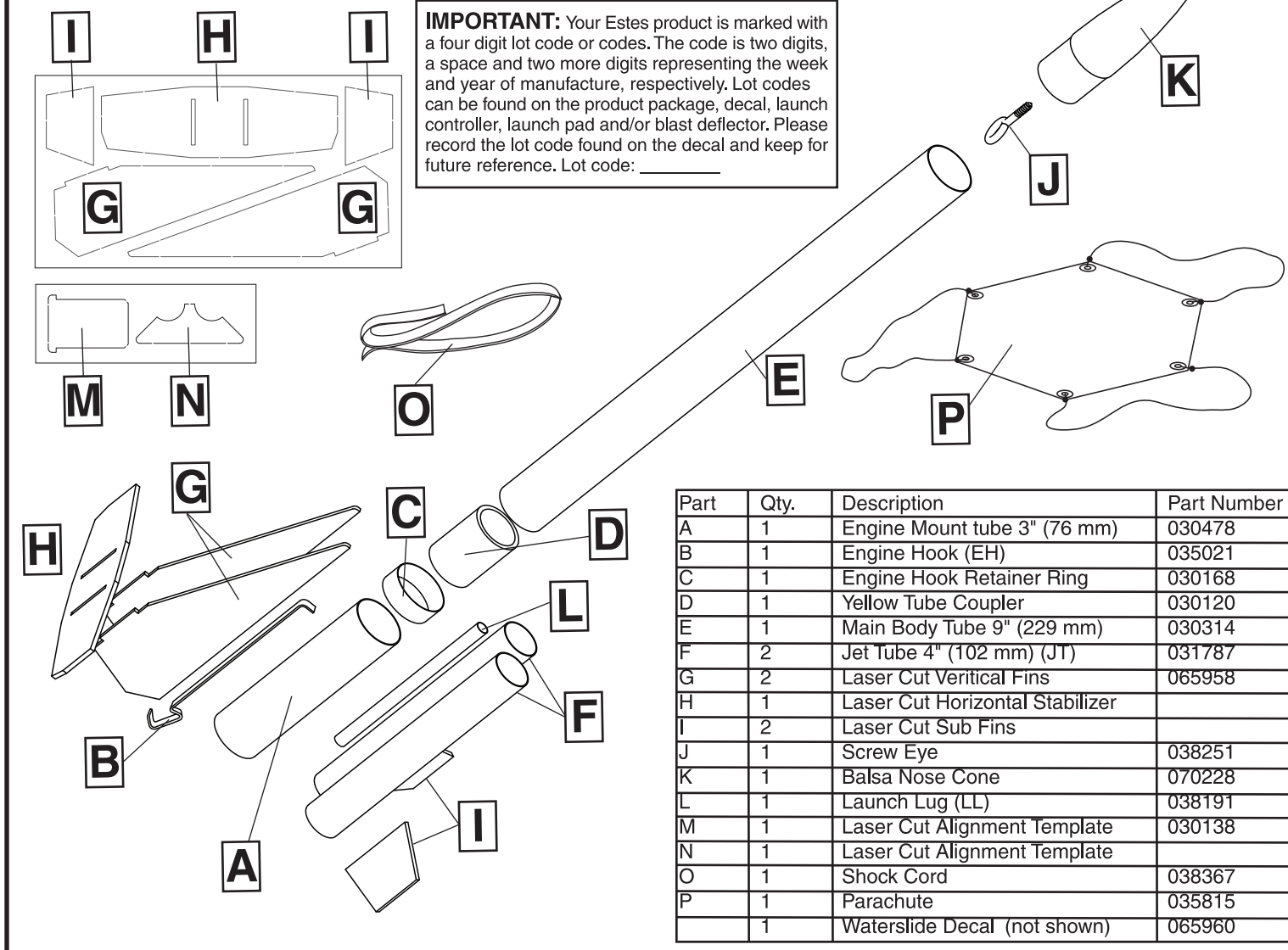
#3203



www.estesrockets.com

ASSEMBLY TIP: Read all instructions before beginning work on your model. Make sure you have all parts and supplies.

NOTE: Test fit all parts together before applying glue. If parts don't fit properly, sand as required for precision assembly.



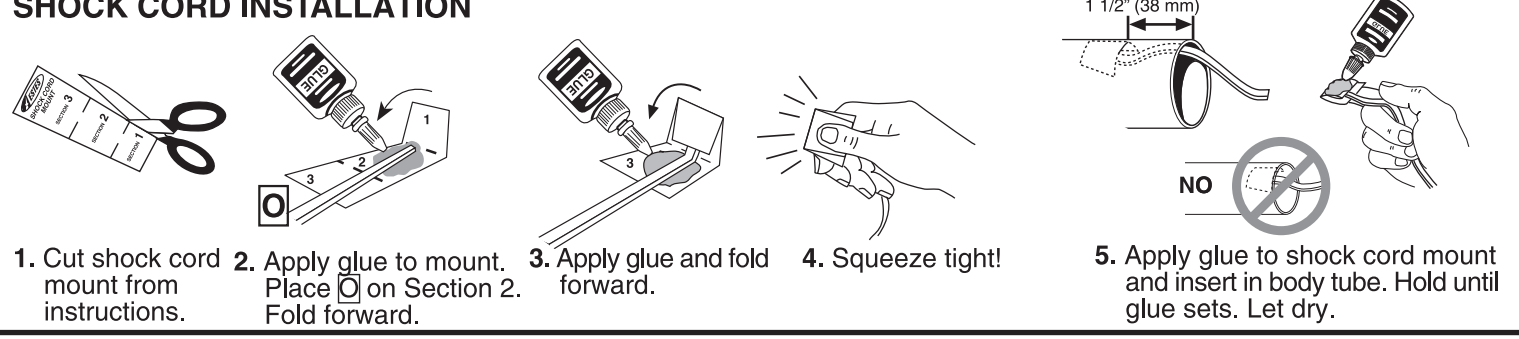
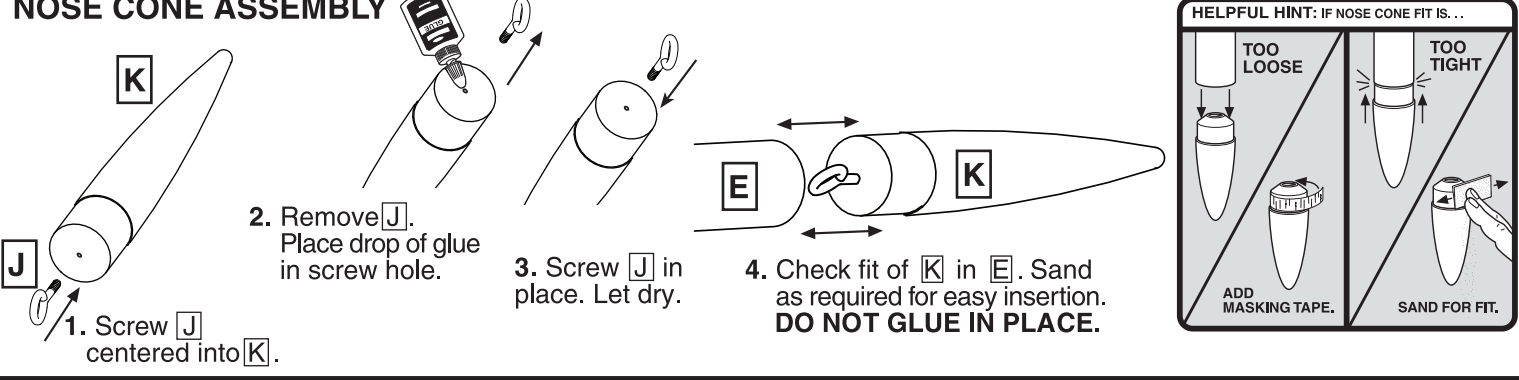
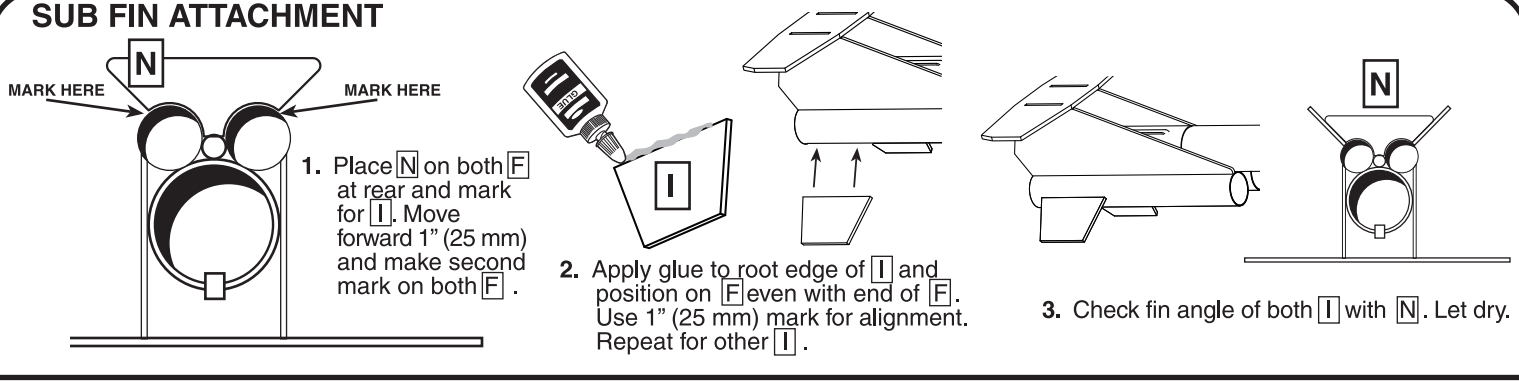
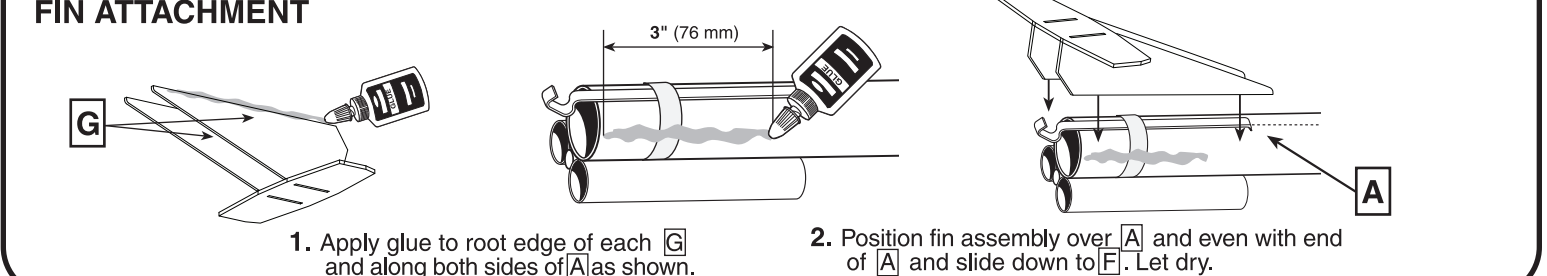
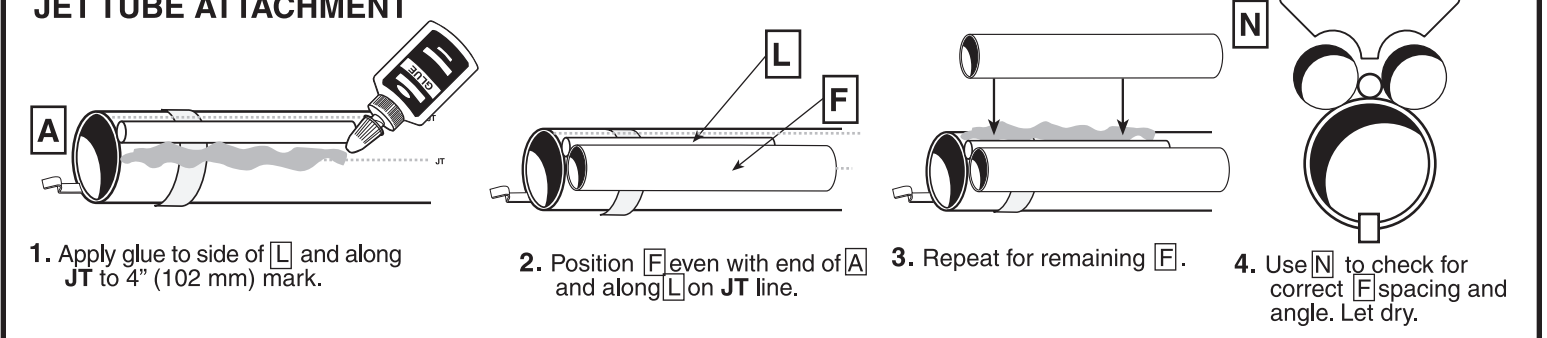
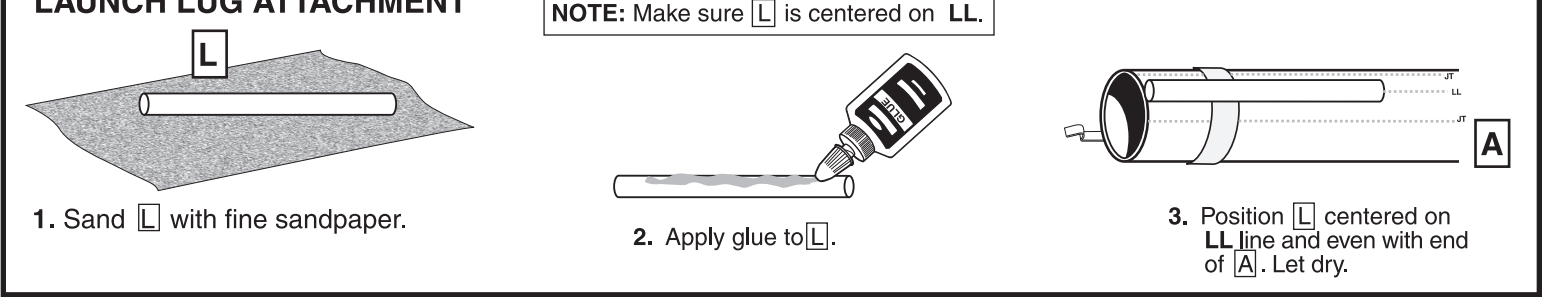
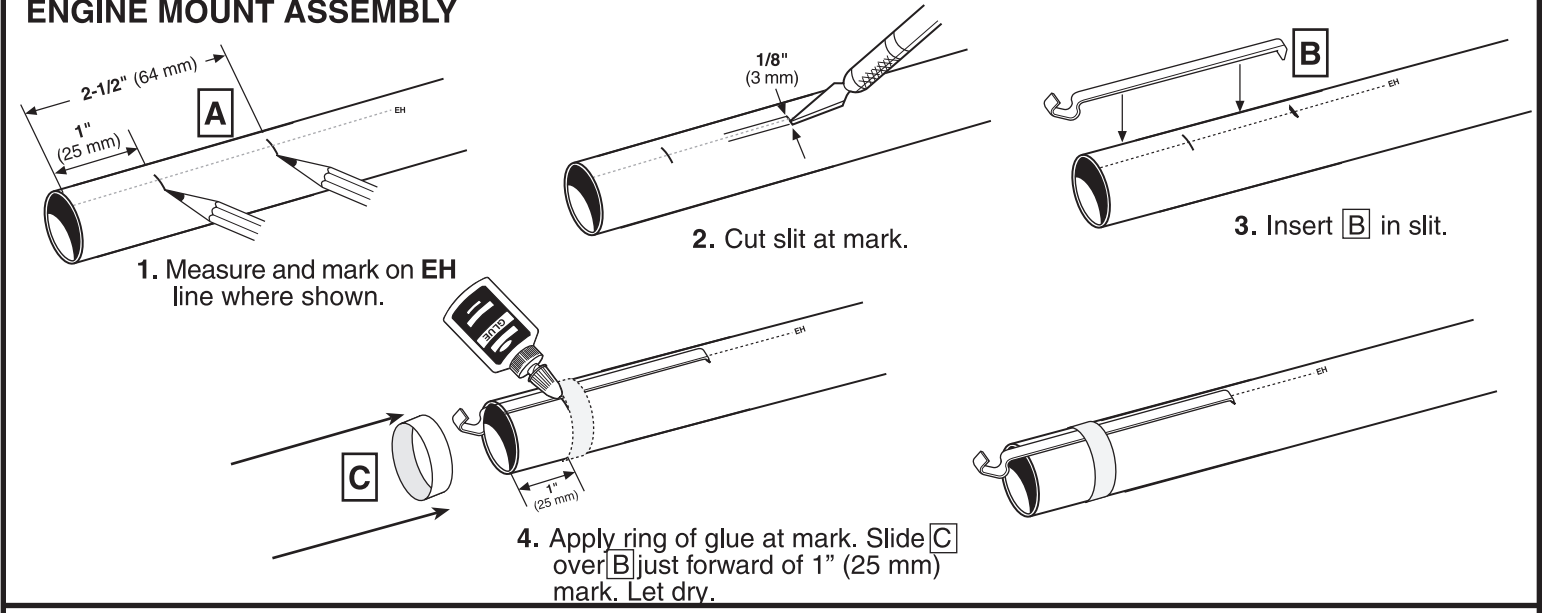
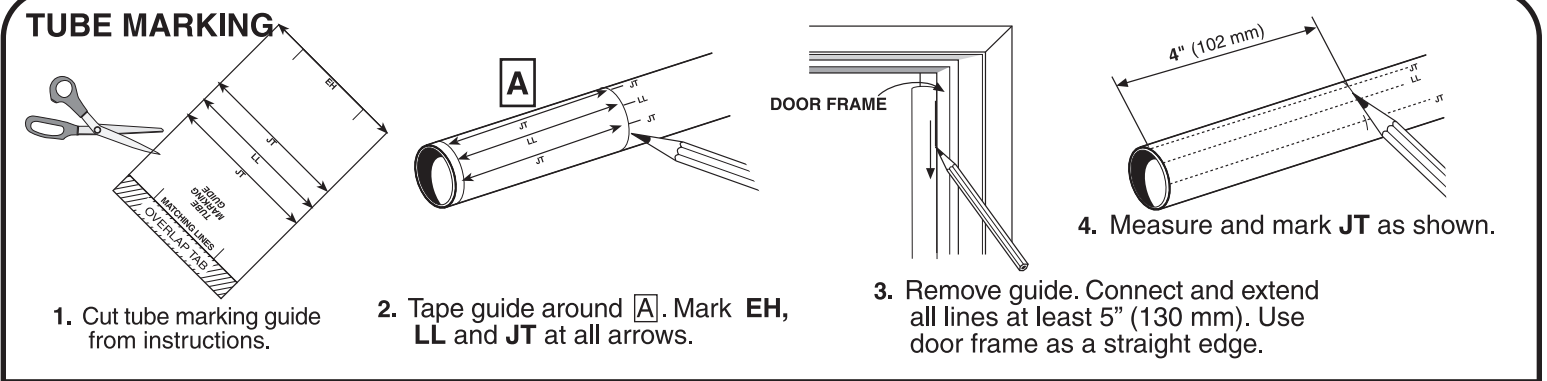
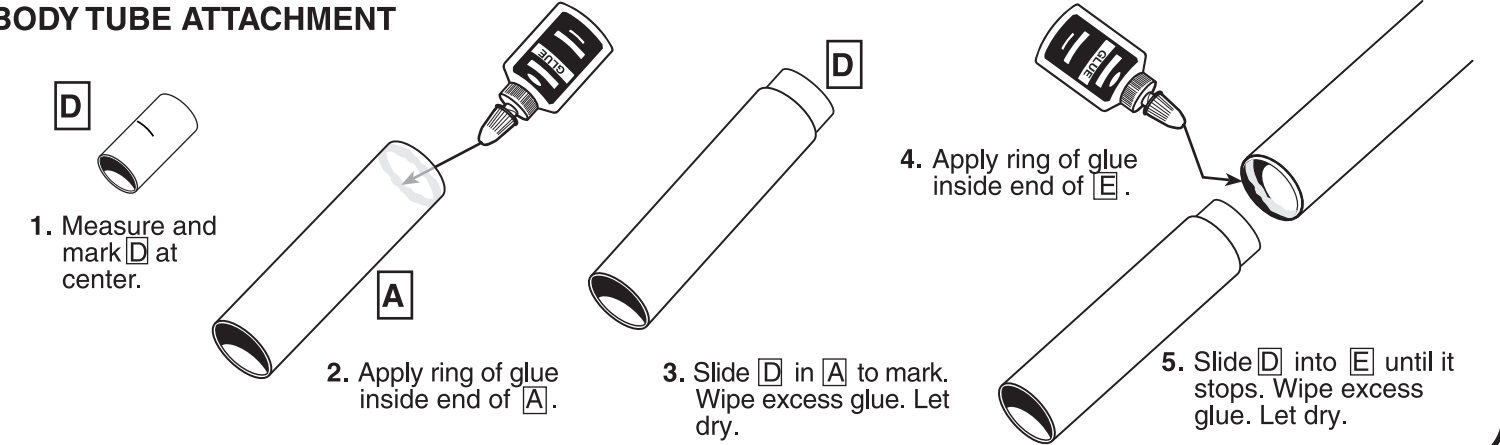
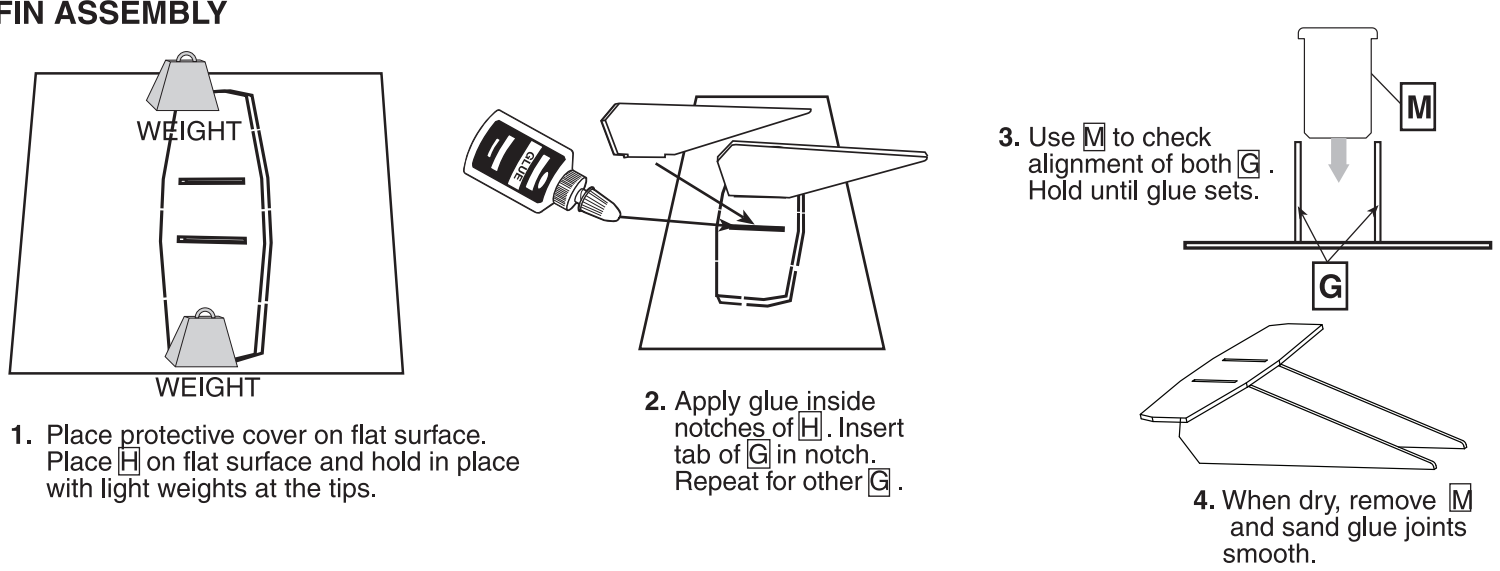
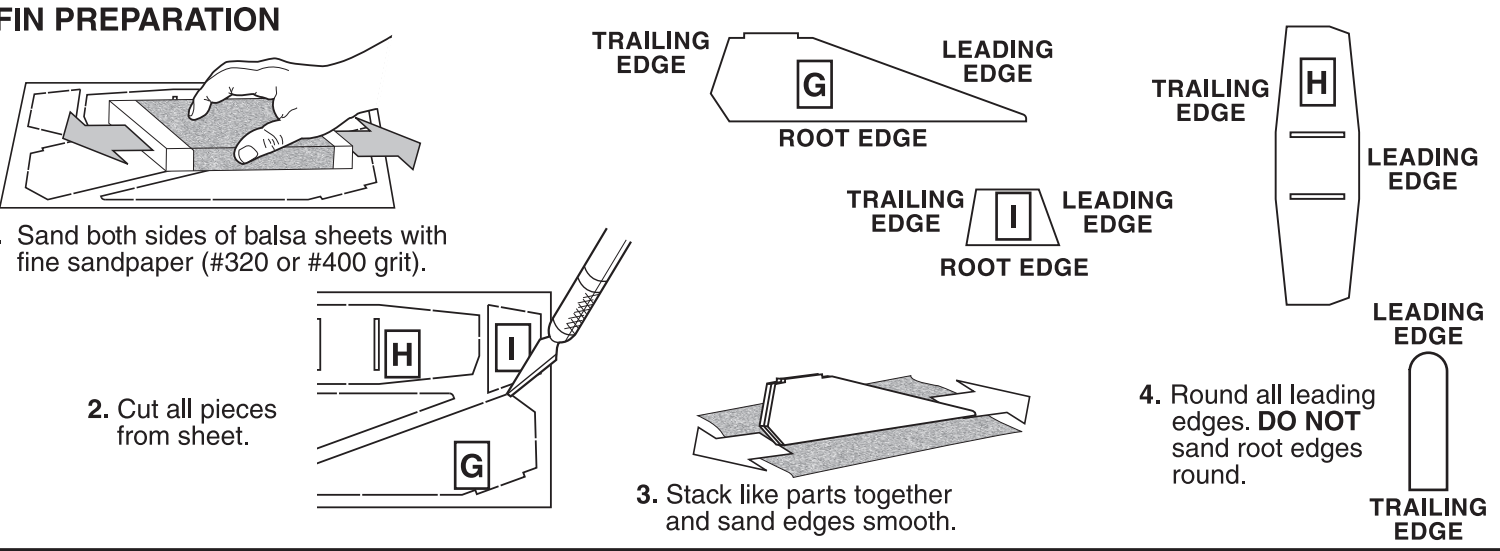
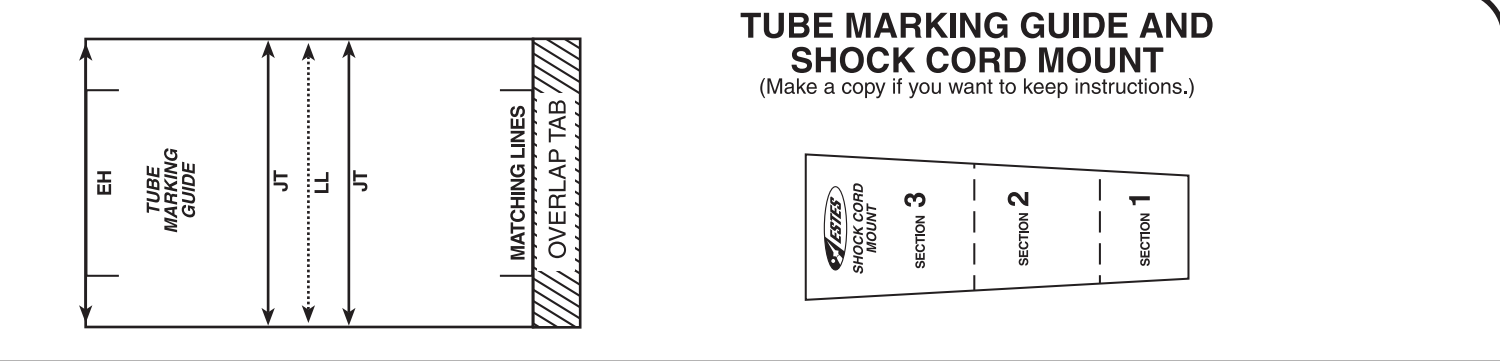
IMPORTANT: Your Estes product is marked with a four digit lot code or codes. The code is two digits, a space and two more digits representing the week and year of manufacture, respectively. Lot codes can be found on the product package, decal, launch controller, launch pad and/or blast deflector. Please record the lot code found on the decal and keep for future reference. Lot code: _____

Part	Qty.	Description	Part Number
A	1	Engine Mount tube 3" (76 mm)	030478
B	1	Engine Hook (EH)	035021
C	1	Engine Hook Retainer Ring	030168
D	1	Yellow Tube Coupler	030120
E	1	Main Body Tube 9" (229 mm)	030314
F	2	Jet Tube 4" (102 mm) (JT)	031787
G	2	Laser Cut Vertical Fins	065958
H	1	Laser Cut Horizontal Stabilizer	
I	2	Laser Cut Sub Fins	
J	1	Screw Eye	038251
K	1	Balsa Nose Cone	070228
L	1	Launch Lug (LL)	038191
M	1	Laser Cut Alignment Template	030138
N	1	Laser Cut Alignment Template	
O	1	Shock Cord	038367
P	1	Parachute	035815
	1	Waterslide Decal (not shown)	065960

SUPPLIES

In addition to the parts included in the kit you will also need:





ROCKET FINISHING

NOTE: We have found Testors spray primers (Testors #2948 White Primer), Testors One Coat Lacquer spray paints, Testors Model Master spray paints and Testors Gloss Lacquer (#1961) to be excellent for providing a long lasting and durable finish on your rocket. Always be sure to spray your models outside or in a well ventilated area.

- STEPS FOR A QUALITY FINISH:**
- NOTE: Finishing the Equinox™ will require application of paint by spray can and with a paint brush.
- Insert shock cord into body tube and hold in place with paper.
 - Lightly sand body tube, fins, and nose cone with fine sandpaper (#320 or #400 grit).
 - Apply glue fillets to fin and launch lug joints.
 - Allow glue to dry overnight.
 - Use a stick inserted into the engine mount end of the rocket for painting.
 - Mask shoulder of nose cone with masking tape. Hold nose cone by the screw eye for painting.
 - Apply 1-2 light coats of white primer to rocket body, fins and nose cone, lightly sanding with fine sandpaper (#320 or #400 grit) between coats.
 - Allow to dry between coats.
 - Spray entire rocket gloss white.
 - Let dry overnight (24 hours is best).
 - Brush vertical fins and horizontal stabilizer Dove Gray.

CONTINUED ON PAGE 5