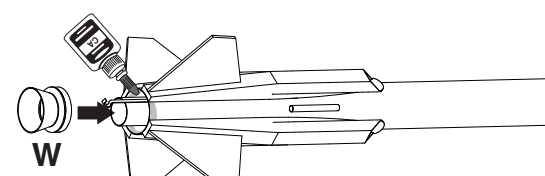


ROCKET FINISHING

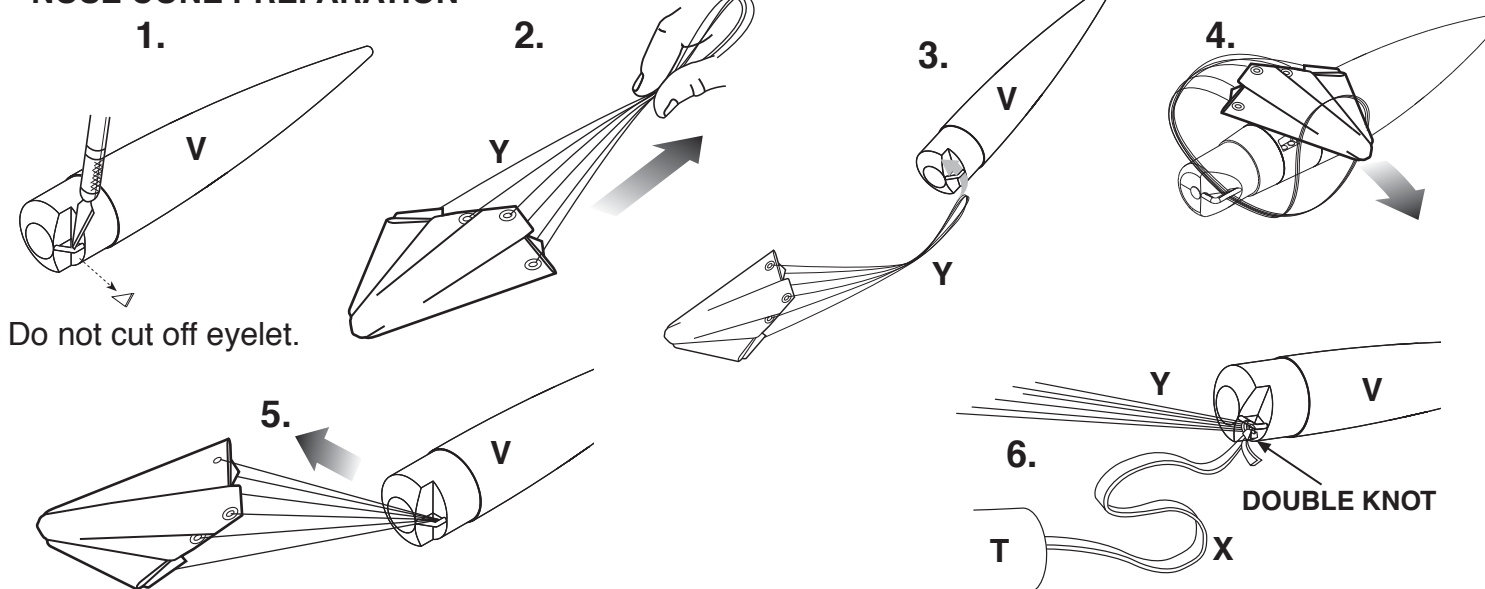
NOTE: We have found Testors One Coat Lacquer, Testors Model Master spray paints and Testors Gloss Lacquer to be excellent for providing a long lasting and durable finish on your rocket. Always be sure to spray your models outside or in a well ventilated area.

STEPS FOR A QUALITY FINISH:

1. Insert shock cord into body tube and hold in place with paper.
2. Lightly sand rocket with fine sandpaper.
3. Apply glue fillets to all glued areas.
 - a. Let dry overnight.
4. Use a stick inserted into the engine tube end of the rocket for painting.
5. Hold nose cone by eyelet for painting. Cover shoulder with masking tape.
6. Apply 2 light coats of white primer to rocket body and nose cone, lightly sanding with fine sandpaper between coats.
 - a. Let primer dry between coats.
7. Spray paint entire rocket white.
 - a. Let dry overnight.
8. Spray paint nose cone red.
 - a. Let dry overnight.
9. Mask off bottom of rocket, leaving upper 8" (20.3 cm) exposed. Spray paint gray.
 - a. Let dry overnight.
10. Spray paint W black.
 - a. Let dry overnight.
11. Glue W in place with CA glue.
12. Apply waterslide decals where shown.
 - a. Cut decals to be applied from decal sheet, trimming close to the decal edge.
 - b. Place one decal at a time in bowl of warm water until decal begins to curl.
 - c. Remove decal, position in place and slide decal off of backing material and onto the model as close to final position as possible.
 - d. Gently blot excess water with a clean paper towel. Allow decals to set overnight.
 - e. Apply protective clear coat, optional. This will provide added protection and shine to your QCC Explorer™ rocket!

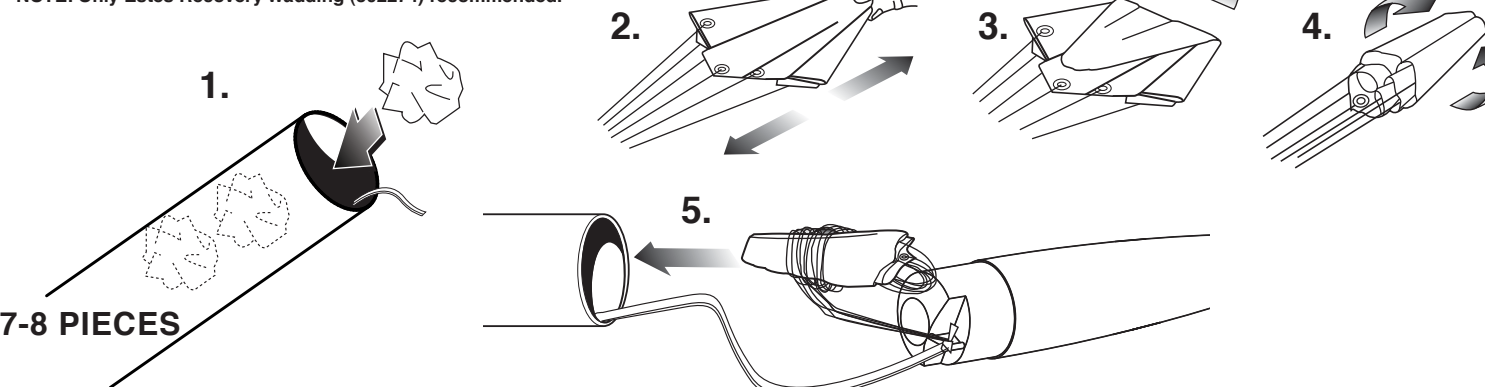


NOSE CONE PREPARATION



FLIGHT RECOVERY PREPARATION

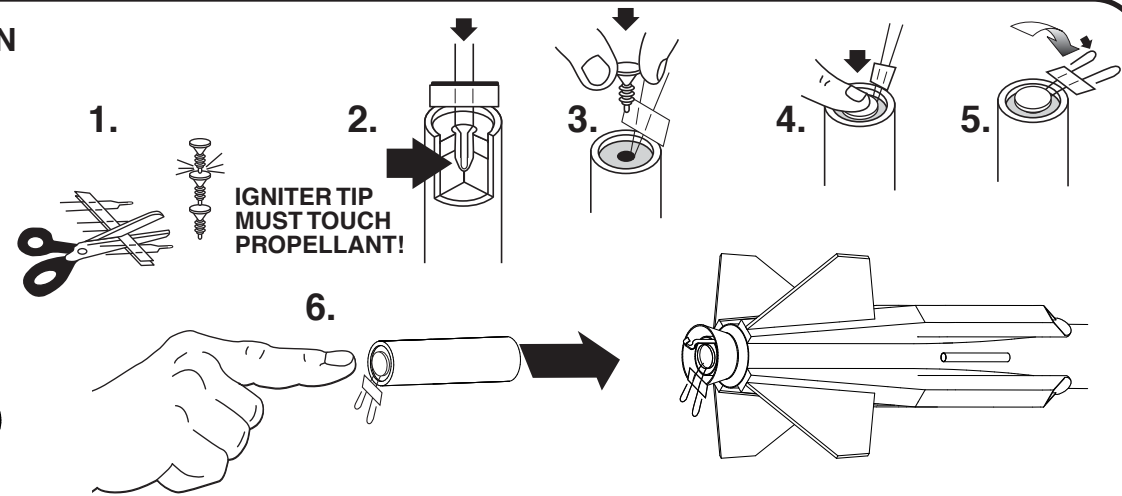
NOTE: Only Estes Recovery Wadding (302274) recommended.



ENGINE PREPARATION

WARNING: FLAMMABLE

To avoid serious injury, read instructions & NAR Safety Code included with engines. **PREPARE ENGINE ONLY WHEN YOU ARE OUTSIDE AT THE LAUNCH SITE PREPARING TO LAUNCH!** If you do not use your prepared engine, remove the igniter before storing engine.



COUNTDOWN AND LAUNCH

IMPORTANT:

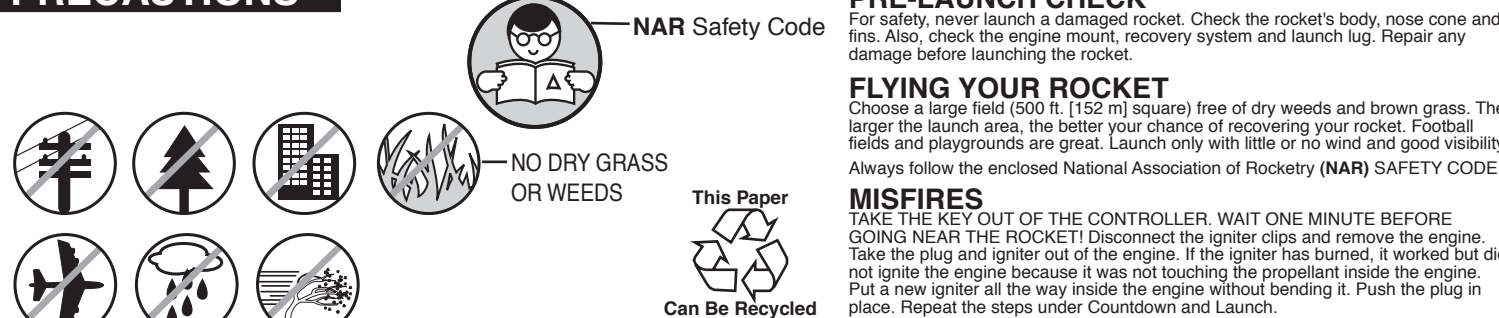
Your Estes product is marked with a four digit lot code or codes. The code is two digits, a space and two more digits representing the week and year of manufacture, respectively. Lot codes can be found on the product package, decal, launch controller, launch pad and/or blast deflector. (Please record the lot code found on the decal and keep for future reference.) Lot code:

ESTES LAUNCH SUPPLIES NEEDED (Sold Separately)

- Porta Pad® II Launch Pad
- Electron Beam™ Launch Controller
- Recovery Wadding (302274)
- Igniters (with engines)
- Igniter Plugs (with engines)
- Recommended Engines: C11-3 (First Flight), D12-5, E9-4*, E9-6*

*E Engines require Porta-Pad E Launch Pad and E Launch Controller.

PRECAUTIONS



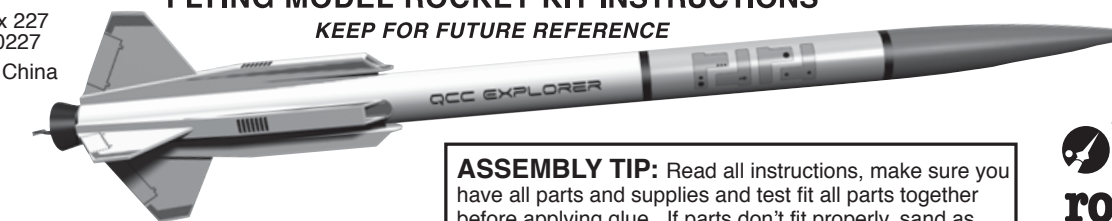
Estes-Cox Corp.
1295 H Street, PO Box 227
Penrose, CO 81240-0227
Printed in Guangdong, China

QCC EXPLORER™

FLYING MODEL ROCKET KIT INSTRUCTIONS

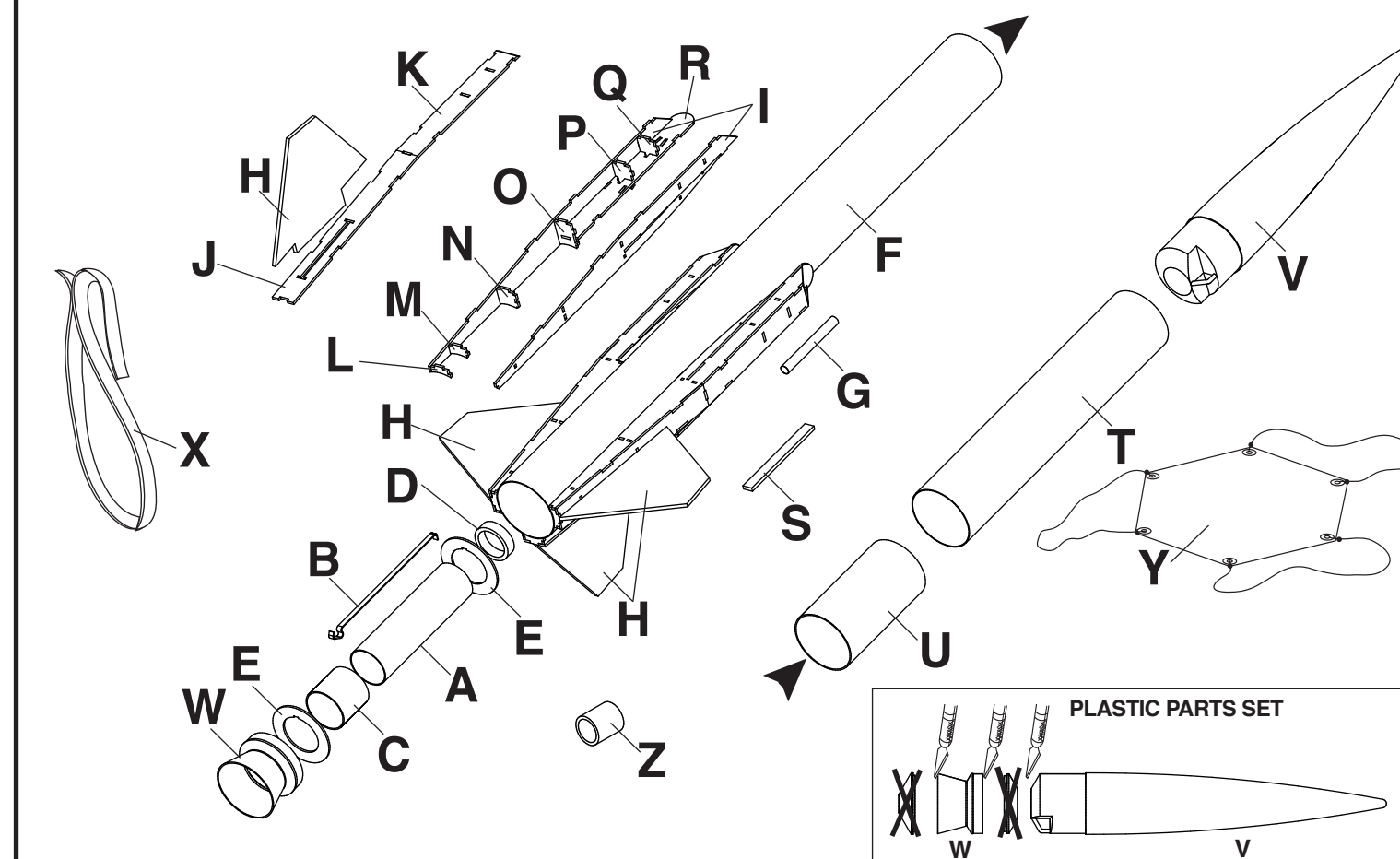
KEEP FOR FUTURE REFERENCE

#3221



ASSEMBLY TIP: Read all instructions, make sure you have all parts and supplies and test fit all parts together before applying glue. If parts don't fit properly, sand as necessary for precision assembly.

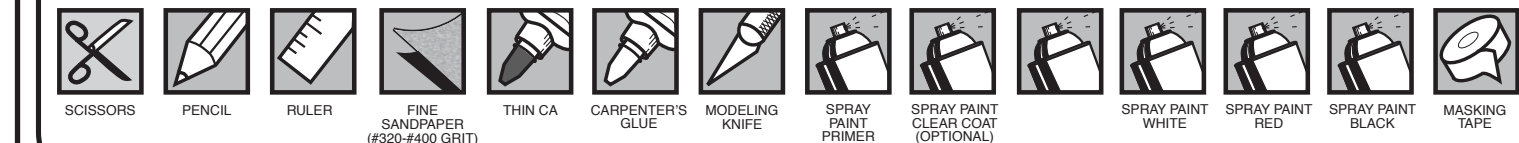
www.
estes
rockets
.com



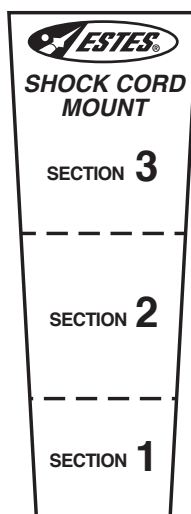
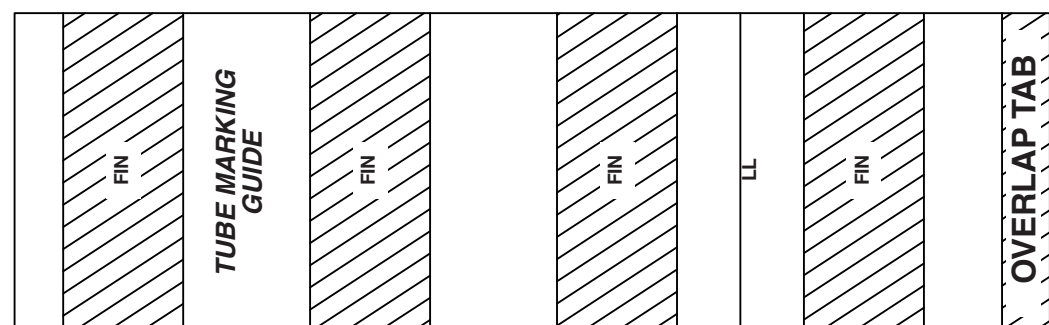
Part	Qty	Description	Part Number	Part	Qty	Description	Part Number
A	1	Engine Mount Tube	031320	S	1	Fin Spacer Tool	066359
B	1	Engine Hook	035022	T	1	Upper Body Tube	030487
C	1	Engine Holder Ring	030160	U	1	Red Tube Coupler	031777
D	1	Green Engine Block	030164-2			Plastic Parts set includes:	072665
E	2	Laser Cut Centering Ring Set	030119	V	1	Nose Cone	
F	1	Lower Body Tube	030396	W	1	Tail Cone	
G	1	Launch Lug	038166	X	1	Shock Cord	038370
H	4	Laser Cut Balsa Fins	066359	Y	1	Parachute	035802
		Laser Cut Balsa Sheet includes:	066358		1	Waterslide Decal (not shown)	066360
I-R	4	Balsa Pieces		Z	1	Orange E to D Engine Spacer	035005

SUPPLIES

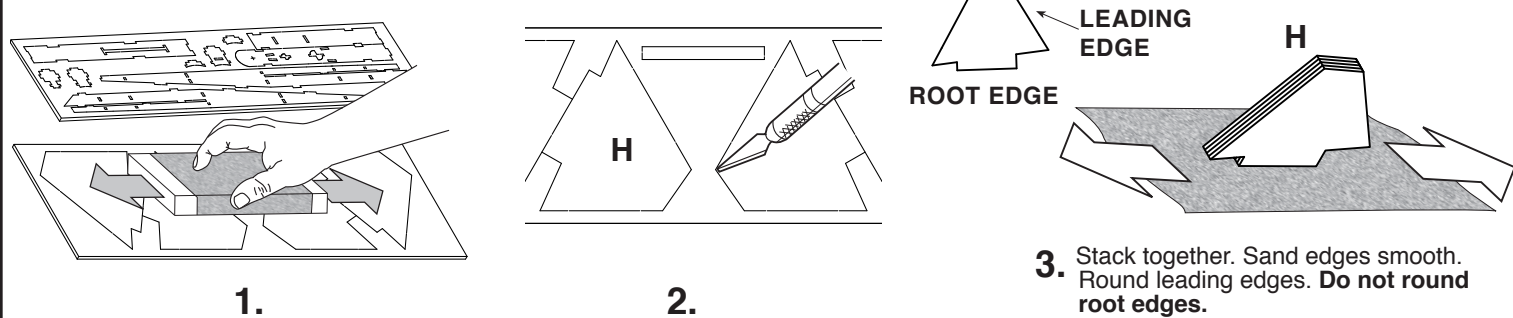
In addition to the parts included in the kit you will also need:



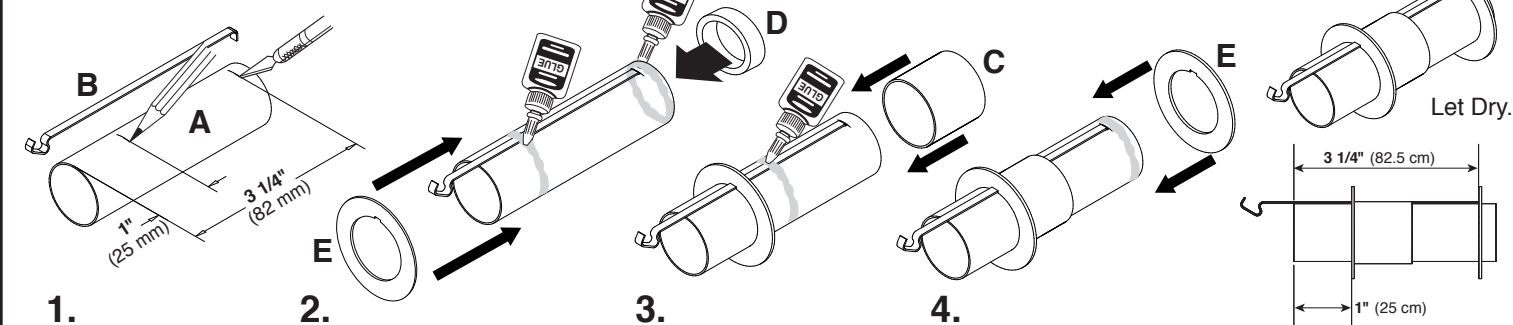
TUBE MARKING GUIDE (Make a copy if you want to keep instructions.)



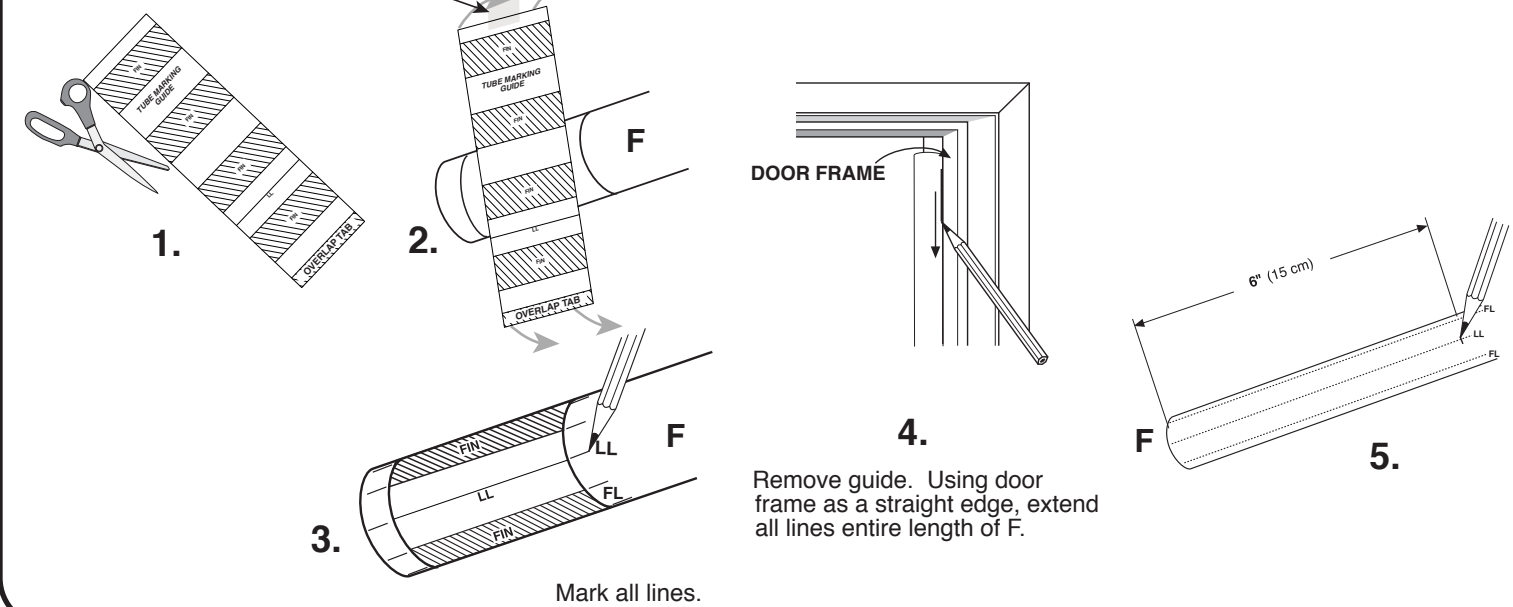
FIN PREPARATION



ENGINE MOUNT ASSEMBLY

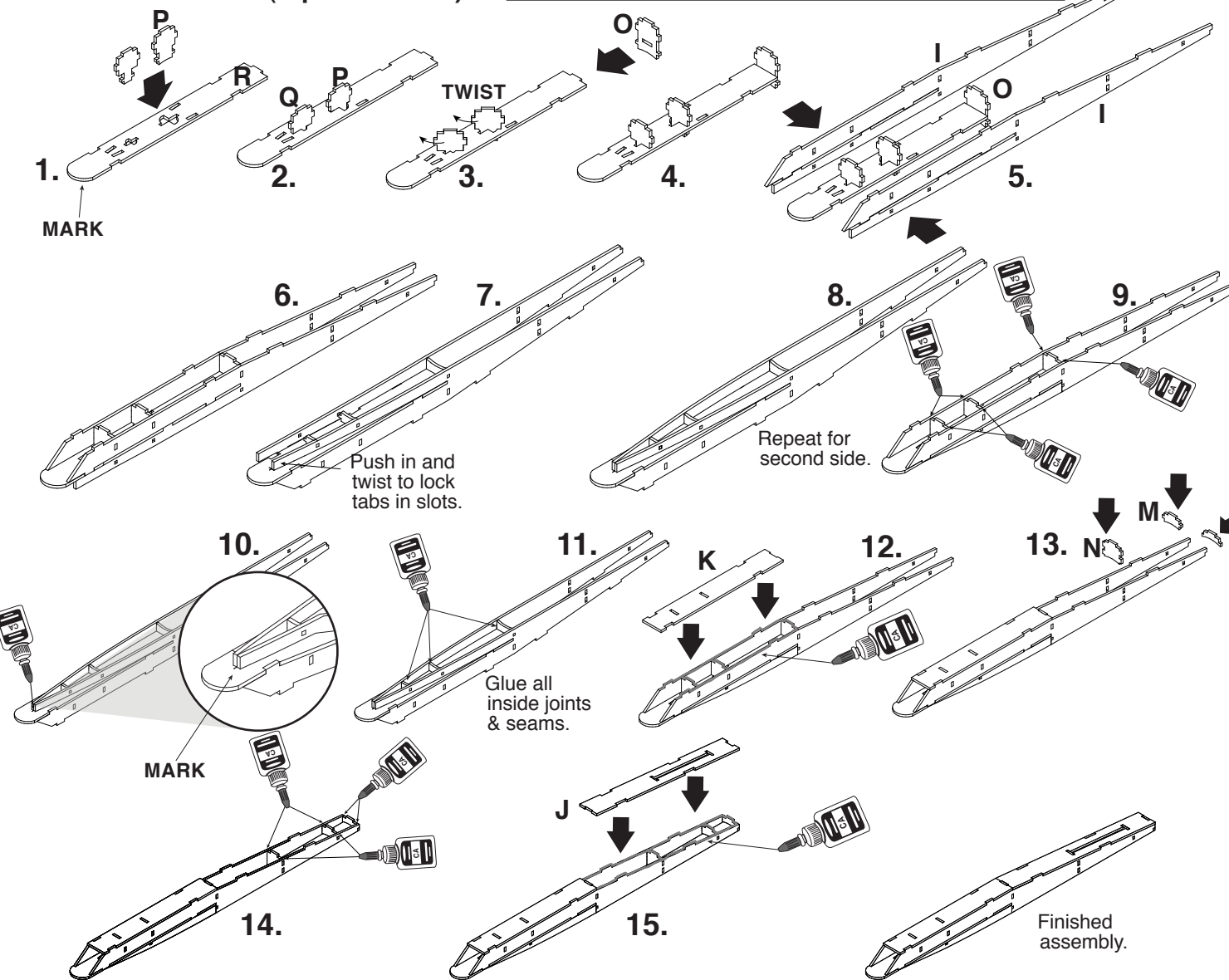


TUBE MARKING

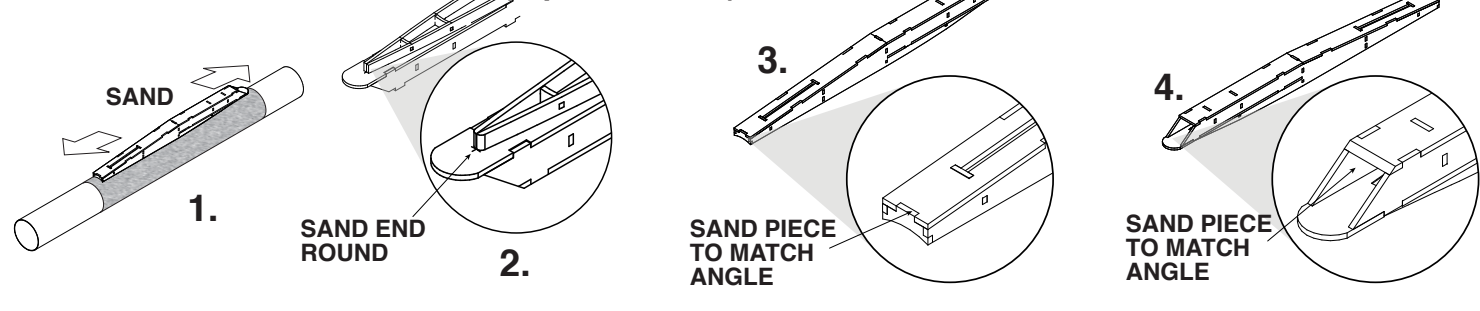


INTAKE ASSEMBLY (repeat 4 times)

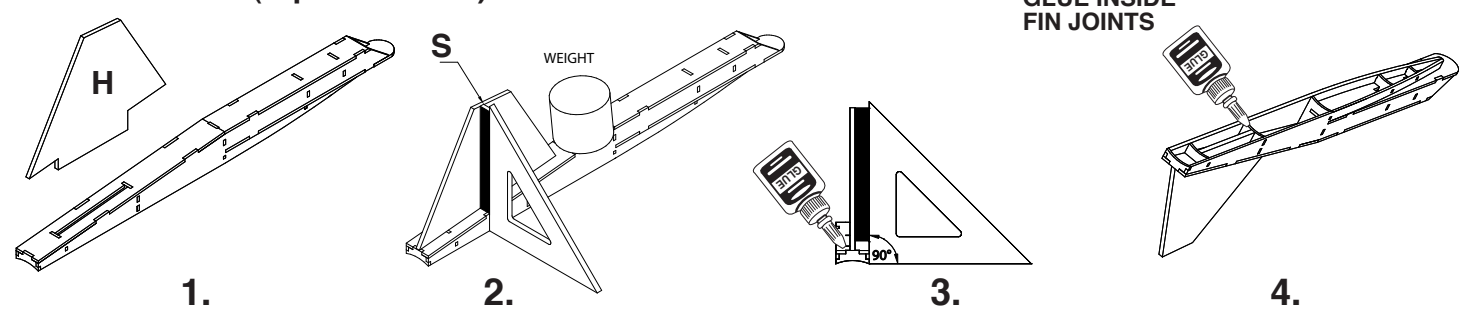
ALL GLUING SHOULD BE DONE ON A FLAT SURFACE



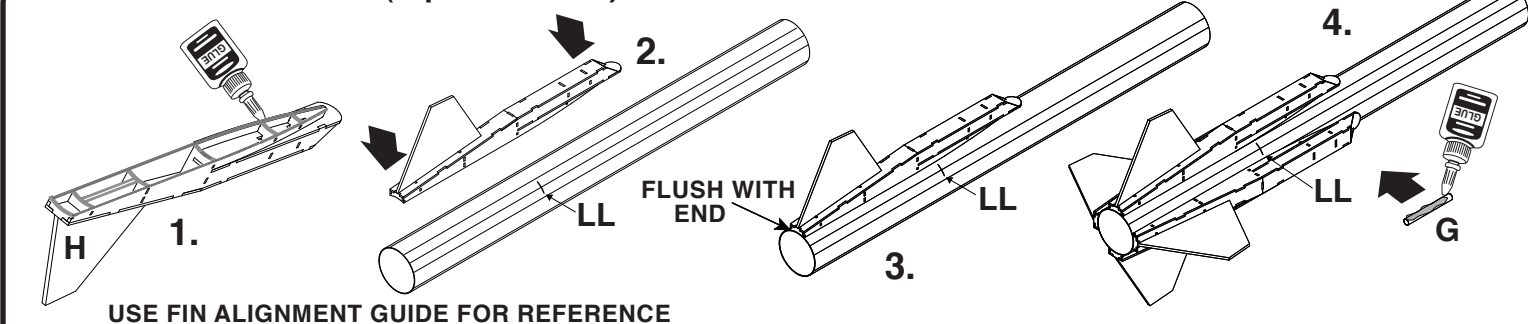
INTAKE ASSEMBLY FINISHING (repeat 4 times)



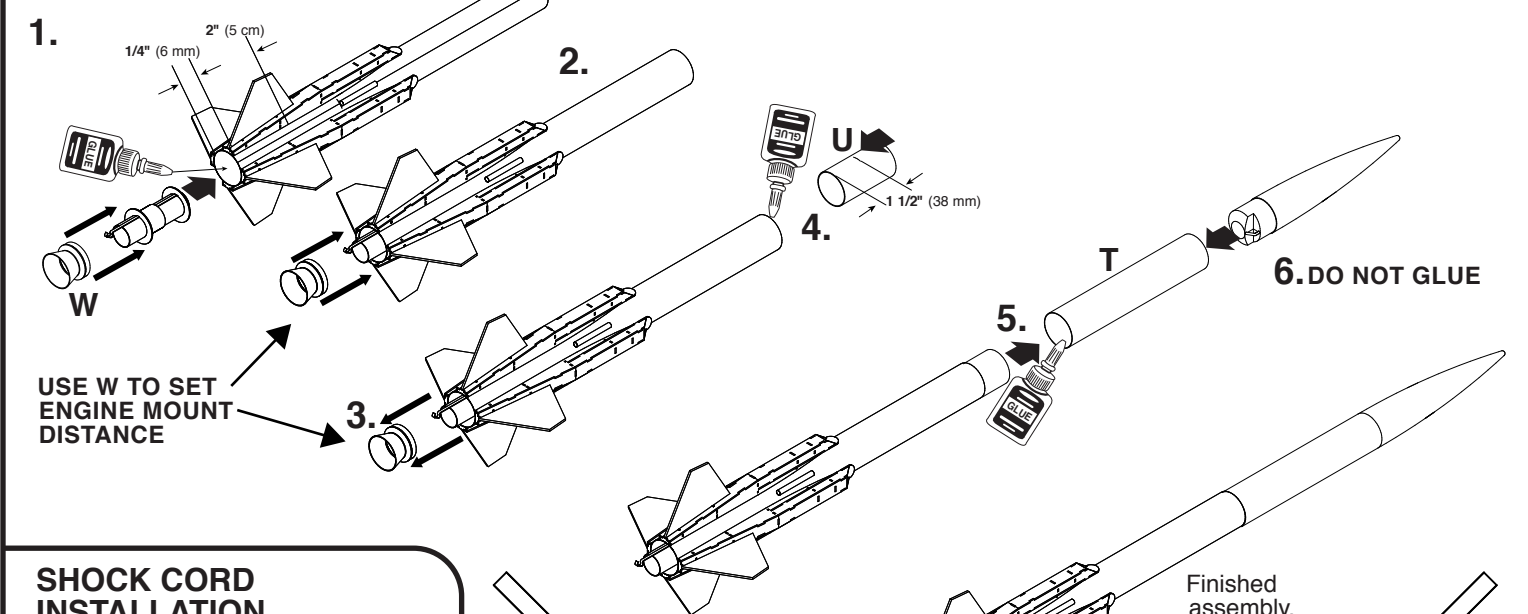
FIN ASSEMBLY (repeat 4 times)



INTAKE ATTACHMENT (repeat 4 times)



FINAL ASSEMBLY



SHOCK CORD INSTALLATION

