



EstesRockets.com

QUIX™

5318



MODEL ROCKET INSTRUCTIONS

KEEP FOR FUTURE REFERENCE

IMPORTANT: Please record date found on decal and keep for future reference. _____

READ ALL INSTRUCTIONS. Make sure you have all parts and supplies. Test fit all parts before applying glue. Product color and shape may vary.

SUPPLIES



SCISSORS



PENCIL



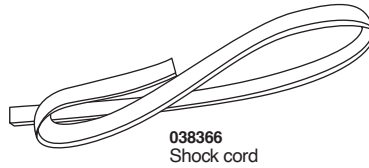
YELLOW GLUE



PLASTIC CEMENT



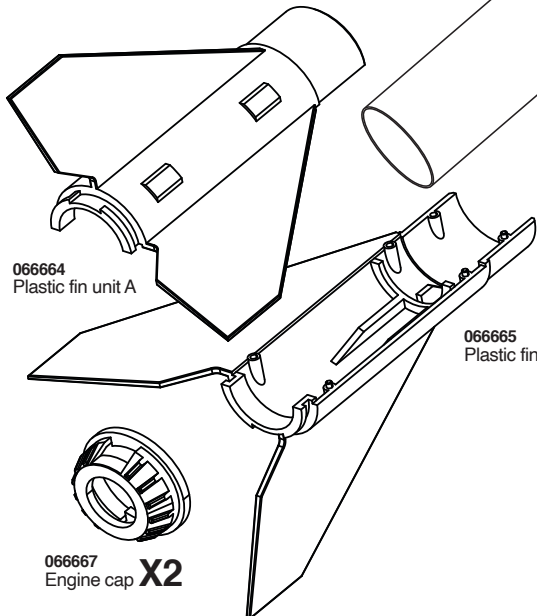
090001-5318
Self-stick decal



038366
Shock cord



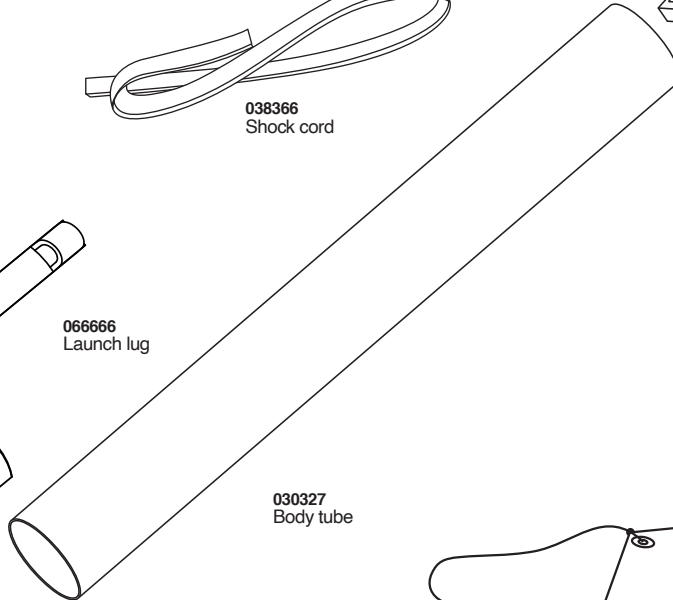
066666
Launch lug



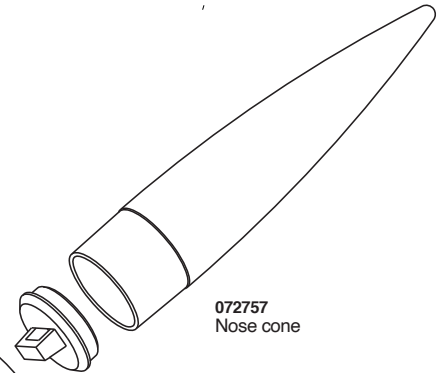
066664
Plastic fin unit A

066665
Plastic fin unit B

066667
Engine cap **X2**



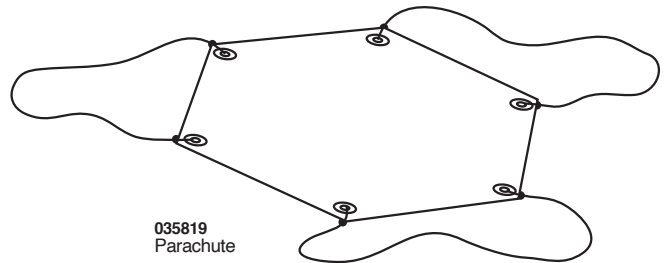
030327
Body tube



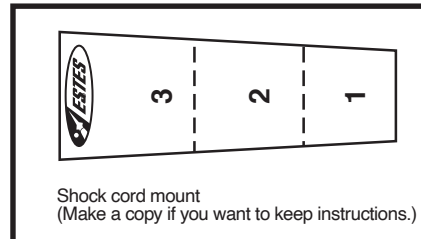
072757
Nose cone



072603
Nose cone insert

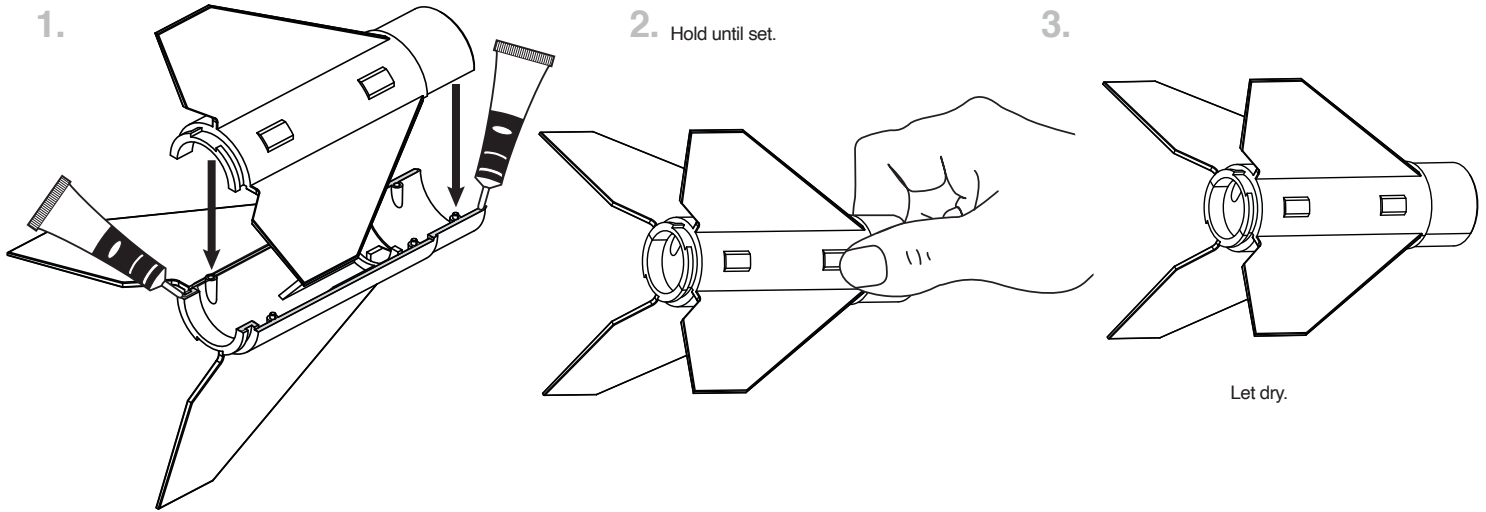


035819
Parachute

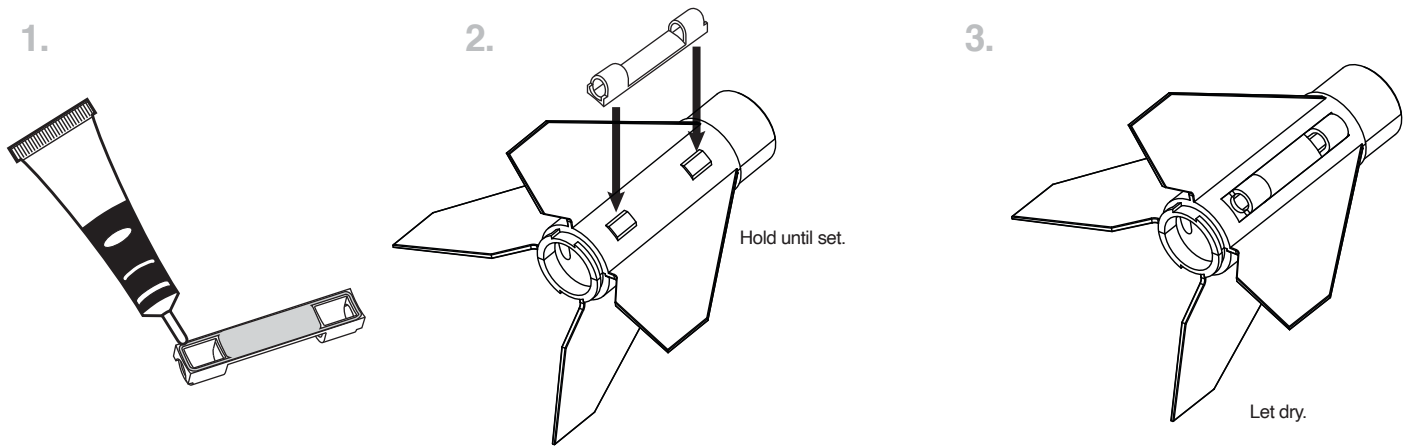


Shock cord mount
(Make a copy if you want to keep instructions.)

ASSEMBLE FIN CAN



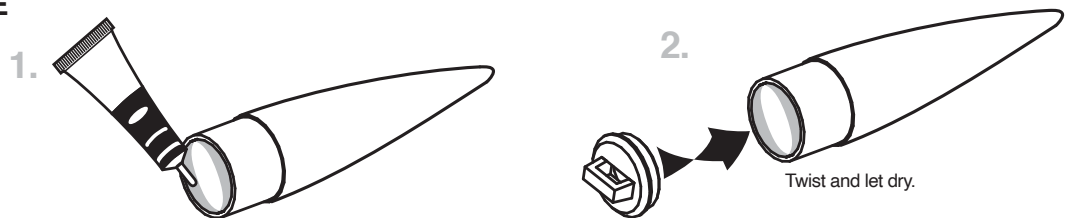
ATTACH LAUNCH LUG



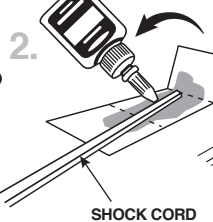

ATTACH BODY TUBE



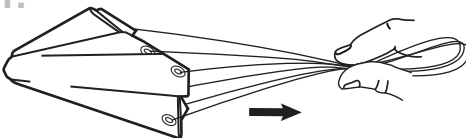
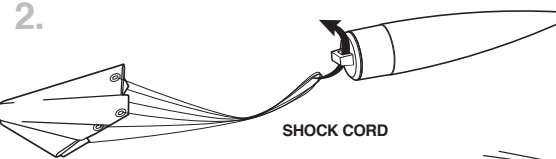
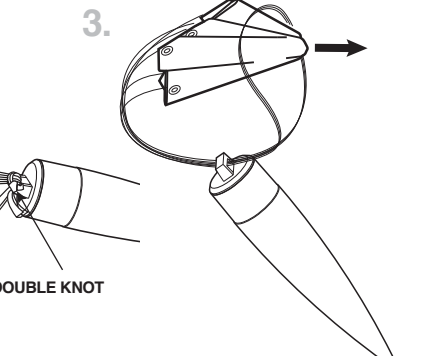
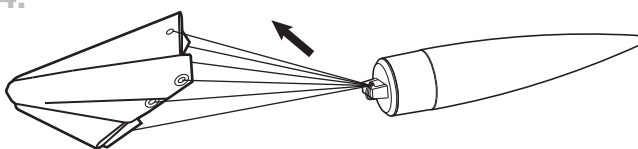
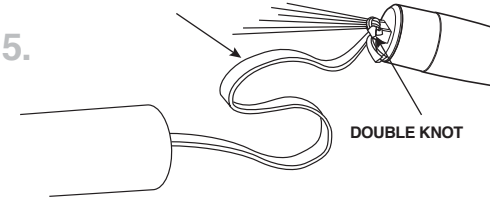
ASSEMBLE NOSE CONE



INSTALL SHOCK CORD

1.  **NOTE:** Cut from front page.
2.  SHOCK CORD
3. 
4.  Hold until set.
5.  Apply glue to shock cord mount.
6.  1" (25 mm) Glue shock cord mount to the inside of body tube.
7.  1" (25 mm) Use pencil to hold until glue sets.

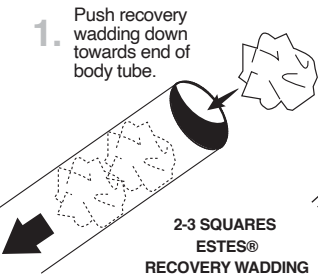
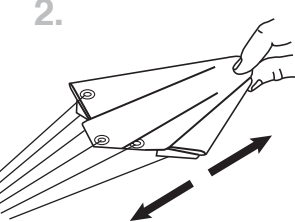
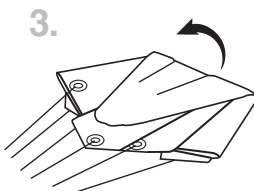
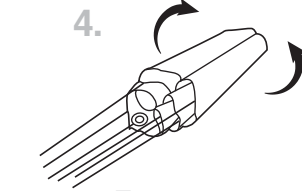
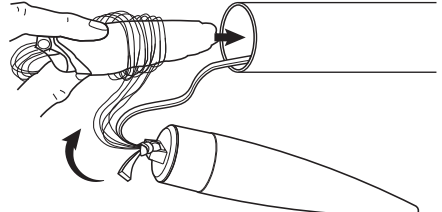
PREPARE RECOVERY SYSTEM

1. 
2.  SHOCK CORD
3. 
4. 
5.  DOUBLE KNOT

APPLY DECAL

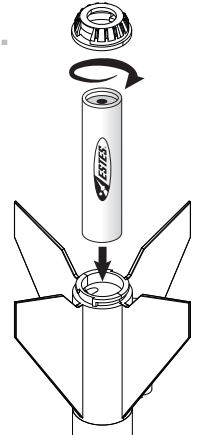
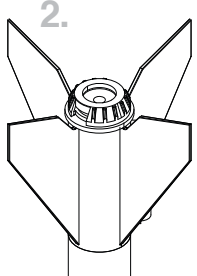
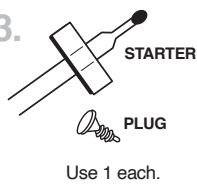
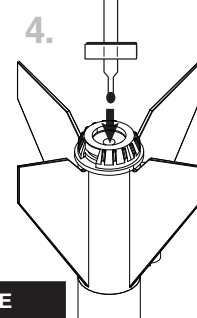

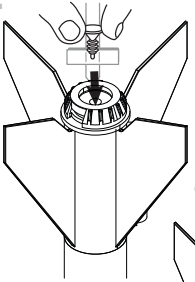
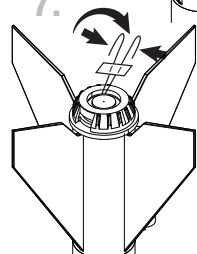


PREPARE FLIGHT RECOVERY

1.  Push recovery wadding down towards end of body tube.
2-3 SQUARES ESTES® RECOVERY WADDING
2. 
3. 
4. 
5. 

NOTE: Recovery wadding and parachute must slide easily into body tube. If too tight, redo.

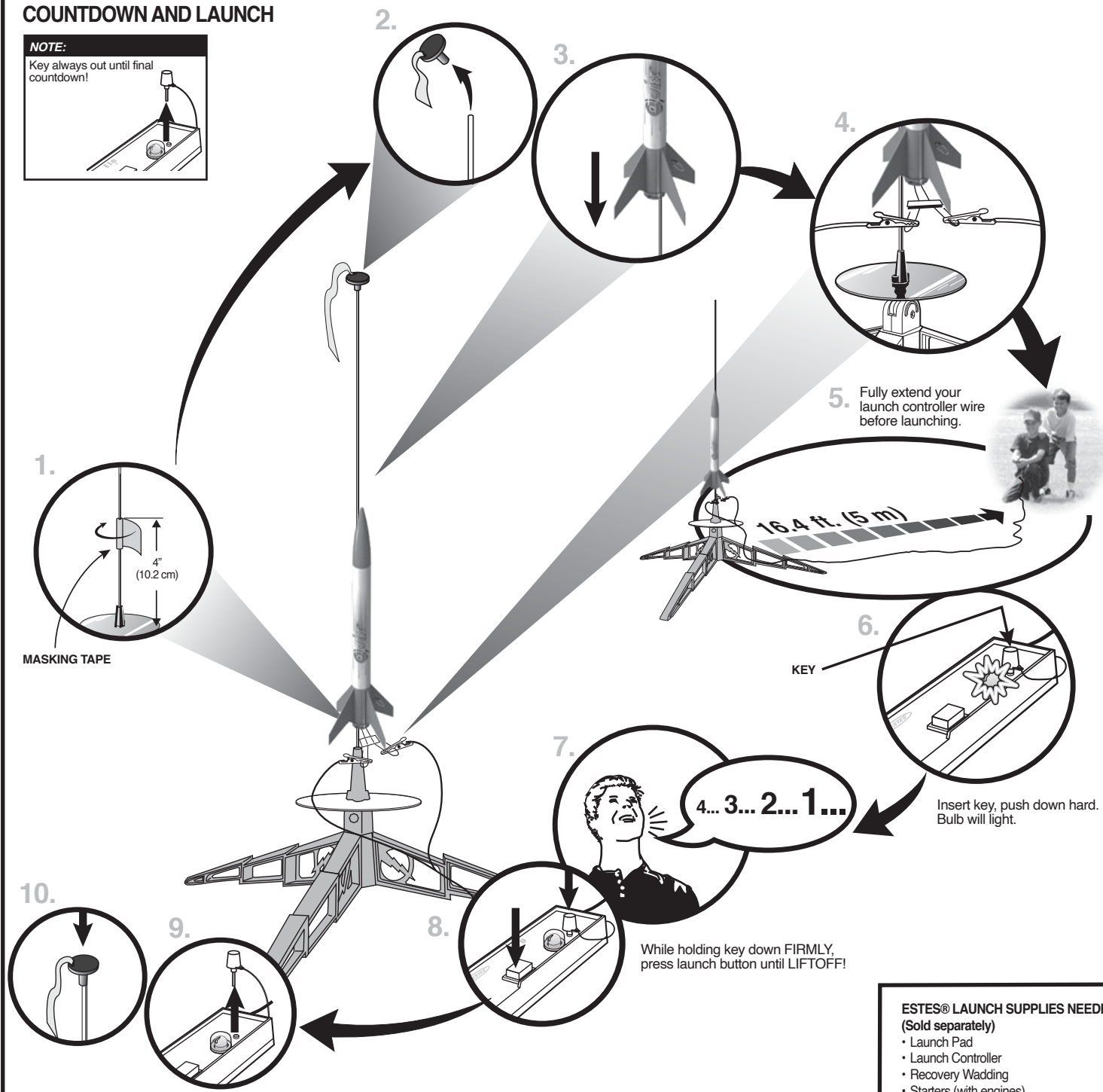
PREPARE ENGINE

1. 
2. 
3.  STARTER
PLUG
Use 1 each.
4. 
5.  TIP MUST TOUCH PROPELLANT!
6. 
7. 

⚠ WARNING: FLAMMABLE
To avoid serious injury, read instructions & NAR Safety Code included with engines. **PREPARE YOUR ENGINE ONLY WHEN YOU ARE OUTSIDE AT THE LAUNCH SITE PREPARING TO LAUNCH.** If you do not use your prepared engine, remove the starter before storing your engine.

COUNTDOWN AND LAUNCH

NOTE:
Key always out until final countdown!



- ESTES® LAUNCH SUPPLIES NEEDED (Sold separately)**
- Launch Pad
 - Launch Controller
 - Recovery Wadding
 - Starters (with engines)
 - Plugs (with engines)
 - Estes® Engines: 1/2A3-4T (first launch), A3-4T, A10-3T

NOTE:
Estimated weight: .6 oz (19.8 g)

PRECAUTIONS



NAR SAFETY CODE



NO DRY GRASS OR WEEDS

PRE-LAUNCH CHECK For safety, never launch a damaged rocket. Check the rocket's body, nose cone and fins. Also, check the engine mount, recovery system and launch lug(s). Repair any damage before launching the rocket.

FLYING YOUR ROCKET Choose a large field (500 ft. [152 m] square) free of dry weeds and brown grass. The larger the launch area, the better your chance of recovering your rocket. Football fields and playgrounds are great. Launch only with little or no wind and good visibility. Always follow the National Association of Rocketry (NAR) SAFETY CODE (enclosed).

MISFIRES TAKE THE KEY OUT OF THE CONTROLLER. WAIT ONE MINUTE BEFORE GOING NEAR THE ROCKET! Disconnect the starter clips and remove the engine. Take the plug and starter out of the engine. If the starter has burned, it worked but did not ignite the engine because it was not touching the propellant inside the engine. Put a new starter all the way inside the engine without bending it. Push the plug in place. Repeat the steps under Countdown and Launch.

