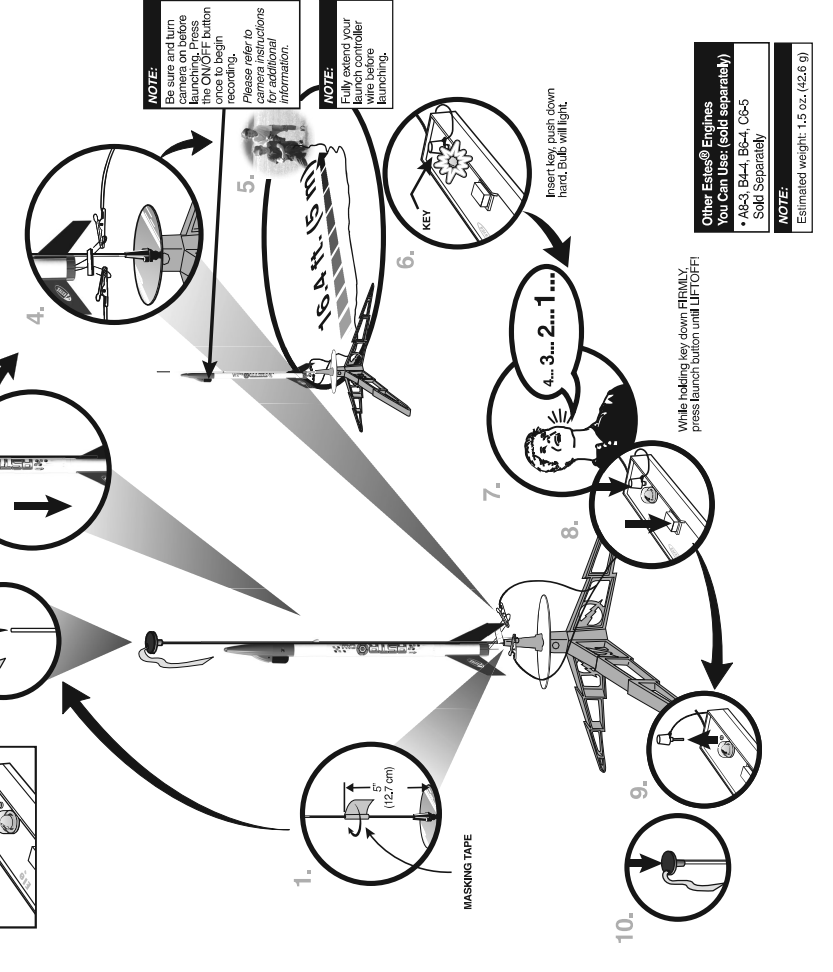


**COUNTDOWN AND LAUNCH**

- ESTES® LAUNCH SUPPLIES INCLUDED**  
(Starter Set Contains)
- Starter Set Launch Pad
  - Electronic Blast Launch Controller
  - Recovery Wadding
  - Stoppers (with engines)
  - Plugs (with engines)
  - B6-4, C6-5 Engines (one each)



**PRECAUTIONS**

**NAR SAFETY CODE**

**NO DRY GRASS OR WEEDS**

**PRE-LAUNCH CHECK:** For safety, never launch a damaged rocket. Check the rocket's body, nose cone and fins. Also, check the engine mount, recovery system and launch lug(s). Repair any damage before launching the rocket.

**FLYING YOUR ROCKET:** Choose a large field (500 ft. [152 m] square) free of dry weeds and brown grass. The larger the launch area, the better your chance of recovering your rocket. Football fields and playgrounds are great. Launch only with little or no wind and good visibility. Always follow the National Association of Rocketry (NAR) SAFETY CODE (enclosed).

**MISFIRE:** TAKE THE KEY OUT OF THE CONTROLLER. WAIT ONE MINUTE BEFORE GOING NEAR THE ROCKET. Disconnect the micro-clips and remove the engine. Take the plug and starter out of the engine. A burned starter means the starter tip was not touching engine propellant. Install a new starter; be sure the tip is touching propellant inside the engine. Push the plug in place. Repeat steps under Countdown and Launch.

© 2020 Estes Industries, LLC • All Rights Reserved  
Estes Industries, LLC, 1295 H Street, Penrose, CO, 81240. Made in Guangdong, China.

PN 090004-5325A (7-20)

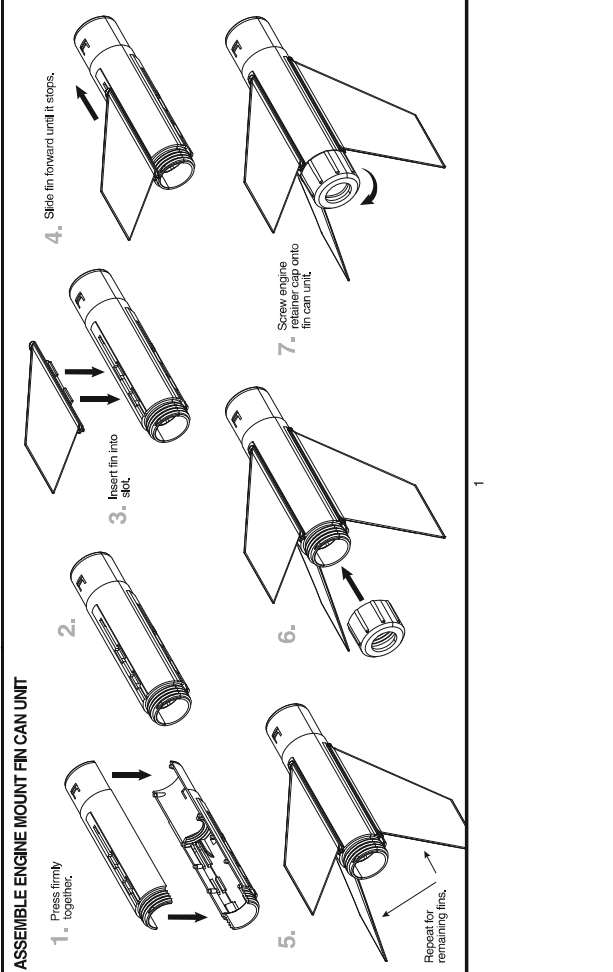
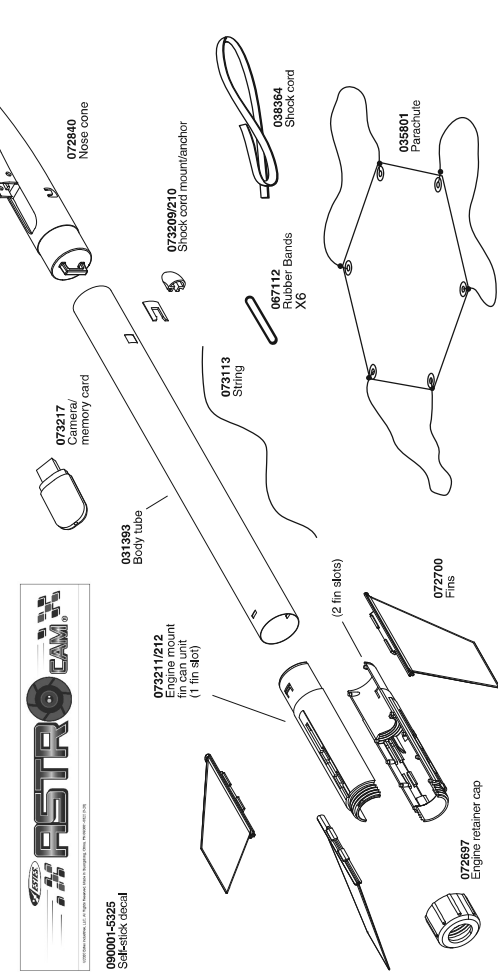
5325

**EstesRockets.com**

**Astrocam®**

**MODEL ROCKET INSTRUCTIONS**  
**KEEP FOR FUTURE REFERENCE**

**IMPORTANT:** Please record date found on package and keep for future reference.  
**READ ALL INSTRUCTIONS.** Make sure you have all parts and supplies.



### ATTACH BODY TUBE & SHOCK CORD MOUNT

- Align slots in body tube with shock cord mount. Slide body tube over fin can until notches on fin can match up with slots in body tube.
- Insert mount through square hole.
- Orient anchor as shown and slide it down the inside of body tube until it snaps into place.

**NOTE:**  
You may need a pen or pencil to help push anchor in place.

### INSTALL SHOCK CORD

- The double knot in end of shock cord.
- Insert unknotted end of shock cord mount.
- Pull on shock cord to pull knot through shock cord mount.
- DOUBLE KNOT RESTS SNUGLY IN SHOCK CORD MOUNT

### ATTACH PARACHUTE AND SHOCK CORD

- Attach single string to top of nose cone and tie double knot.
- On opposite end of single string make a small loop and tie double knot again.
- Attach shock cord to bottom of nose cone and tie double knot.
- DOUBLE KNOT
- DOUBLE KNOT
- DOUBLE KNOT

### PREPARE FLIGHT RECOVERY

- Push recovery wadding down into groove of body tube.
- 3-4 SQUARES ESTES® RECOVERY WADDING
- PULL TIGHT DOWN GROOVE
- Wrap shroud lines loosely and insert parachute into body tube.
- PULL TIGHT DOWN GROOVE
- NOTE: Recovery wadding and parachute must slide easily into body tube. If too tight, redo.

### APPLY DECALS



### PREPARE ENGINE

- Use 1 each. STARTER and PLUG
- LAUNCH LUGS
- TIP MUST TOUCH PROPELLANT!
- 5.
- 6.
- 7.

**WARNING: FLAMMABLE**  
To avoid serious injury, read instructions & WARNING label on the engine. SAFETY GOGGLES ARE REQUIRED WHEN PREPARING TO LAUNCH. If you do not use your prepared engine, remove the starter before storing your engine.

**NOTE:**  
When lighting engine cap, make sure launch lugs are centered between engine retainer cap ridges.

### PREPARE CAMERA

- Memory card comes installed new. To eject or reinsert, see step 2.
- Use a paperclip or pen to fully insert memory card. Push until card clicks in place.
- Remove cap before inserting camera into nose cone.

### INSERT CAMERA

- Insert camera into the nose cone with USB end first. Firmly seat in opening.
- Attach a rubber band to the hook on nose cone and stretch across to secure camera.
- When ready to record, press the ON/OFF button once. A blue light on the camera indicates recording. Press the ON/OFF button.

Please refer to camera instructions for additional information.