



estesrockets.com

EPIC II™

7286



MODEL ROCKET INSTRUCTIONS

KEEP FOR FUTURE REFERENCE

IMPORTANT: Please record date found on decal and keep for future reference. _____

READ ALL INSTRUCTIONS. Make sure you have all parts and supplies. Test fit all parts before applying glue. Sand as necessary for precision assembly. Product color and shape may vary.

SUPPLIES



SCISSORS



PENCIL



RULER



FINE SANDPAPER



YELLOW GLUE



CLEAR TAPE



HOBBY KNIFE



MASKING TAPE



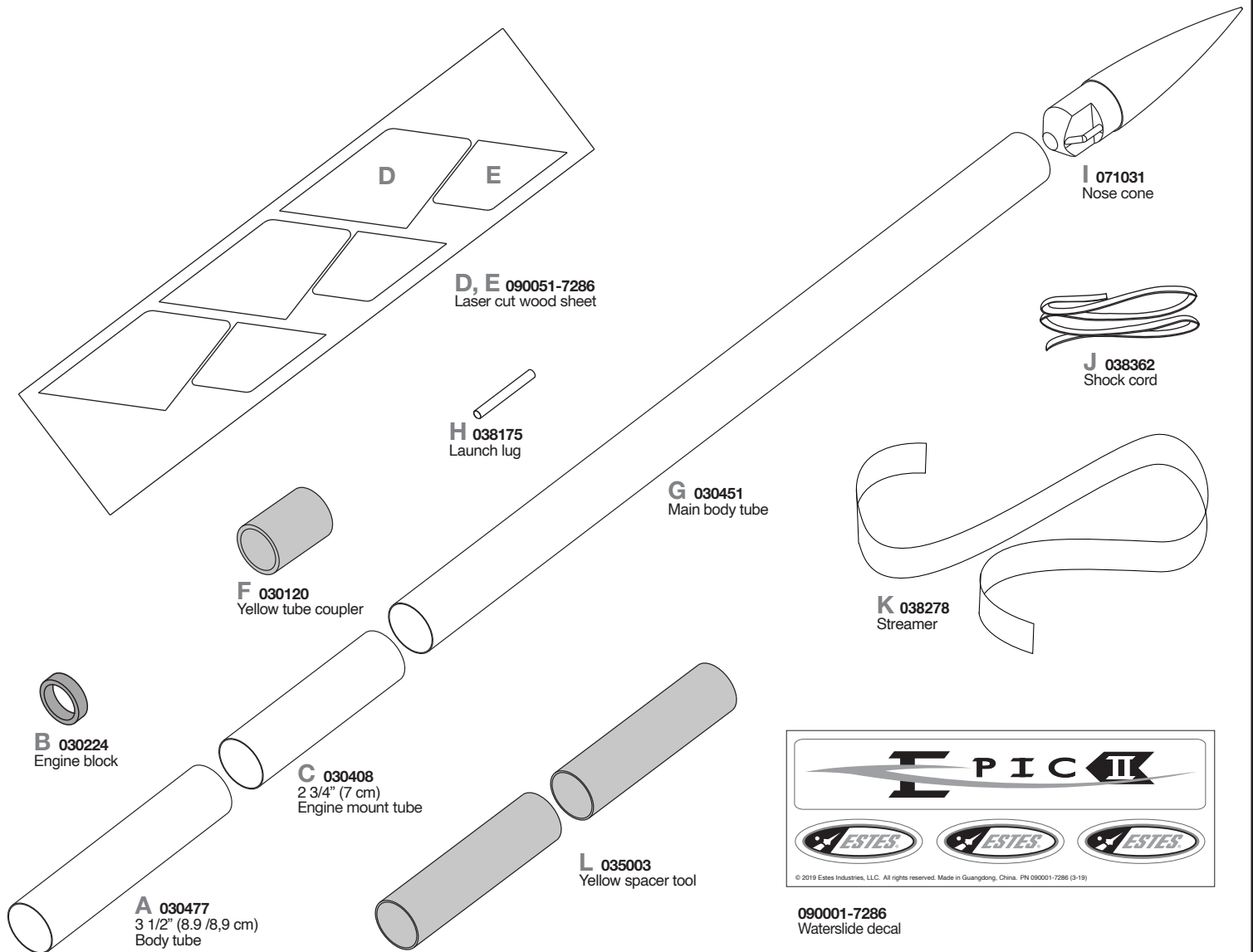
PRIMER (WHITE)



PAINT (BLUE, WHITE, BLACK)



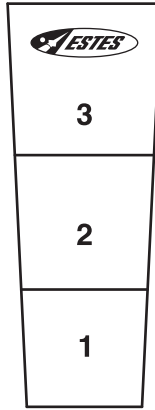
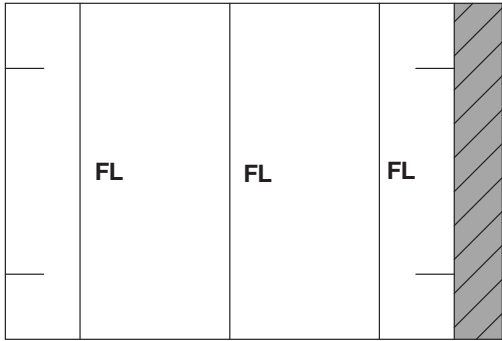
CLEAR COAT (OPTIONAL)



© 2019 Estes Industries, LLC. All rights reserved. Made in Guangdong, China. PN 090001-7286 (3-19)

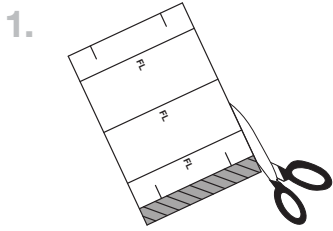
TUBE MARKING GUIDE & SHOCK CORD MOUNT

Make a copy if you want to keep instructions.

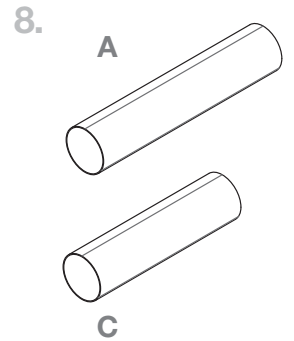
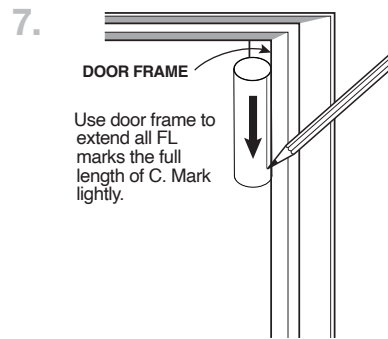
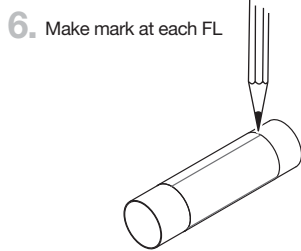
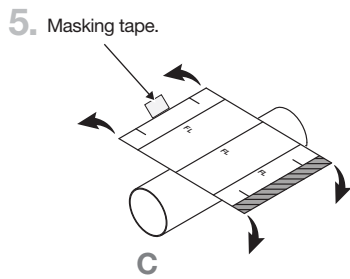
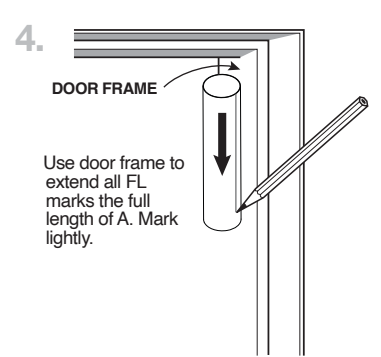
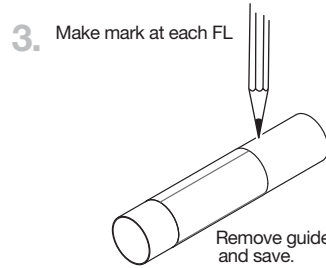
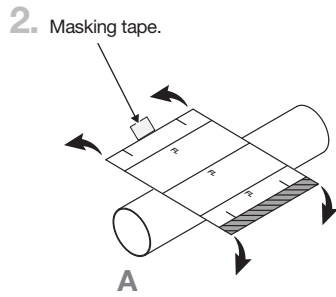


SHOCK CORD MOUNT

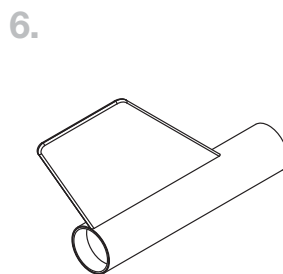
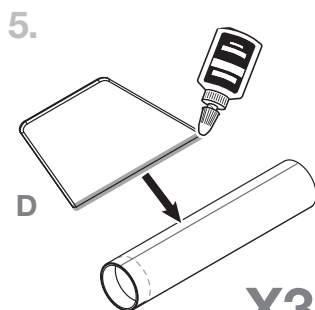
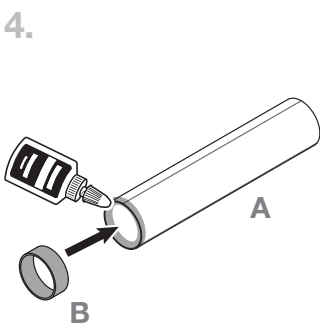
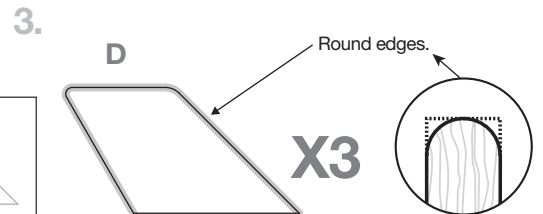
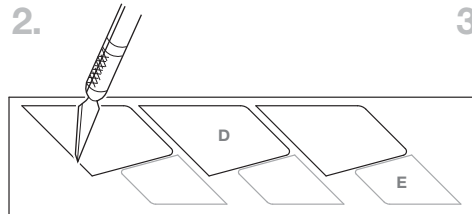
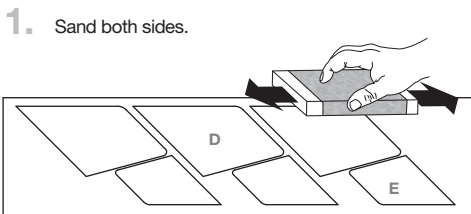
MARK TUBE



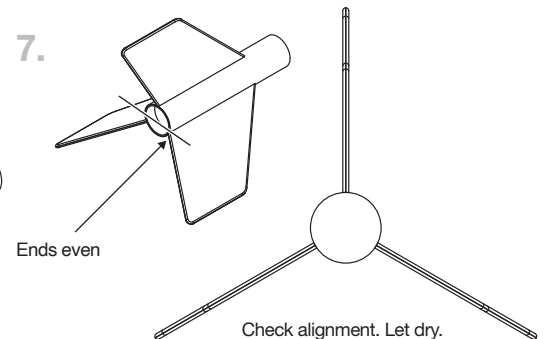
NOTE:
Cut from above.



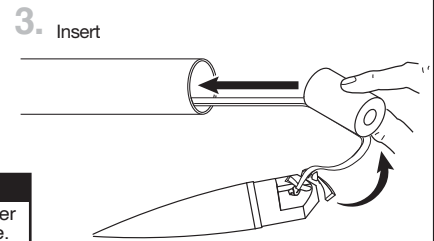
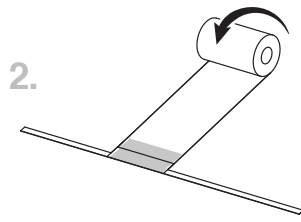
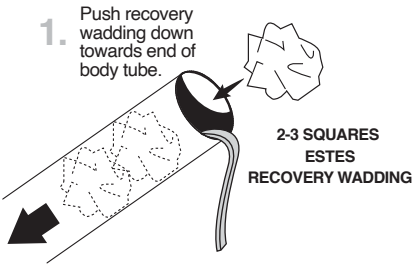
PREPARE AND ATTACH BOOSTER FINS



X3 Repeat for all fins.

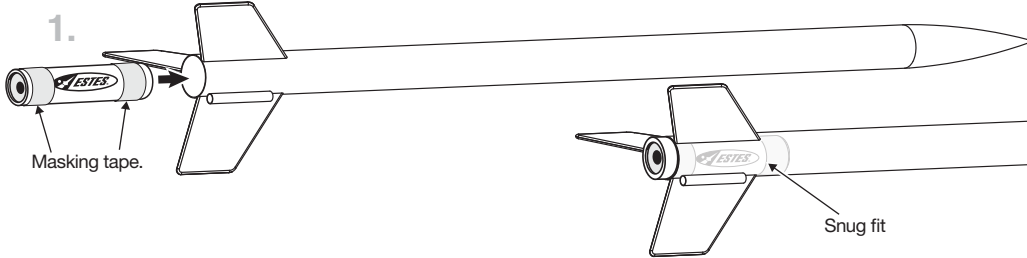


PREPARE FLIGHT RECOVERY



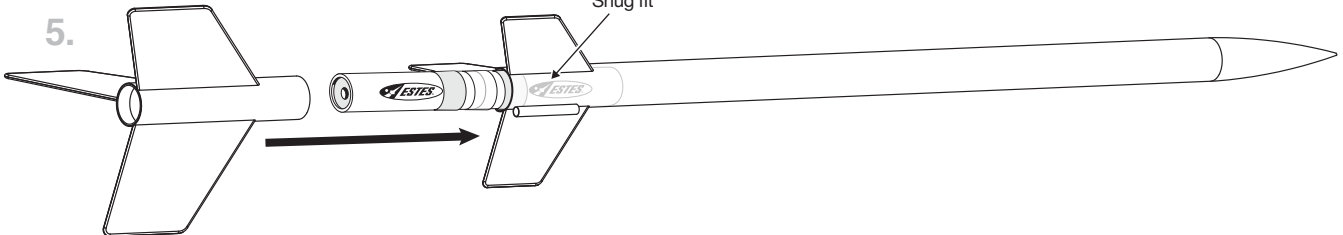
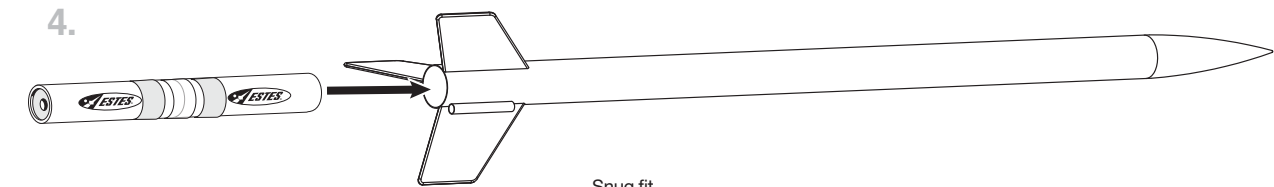
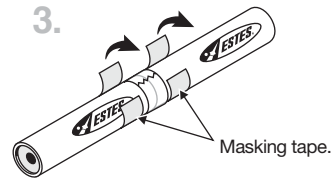
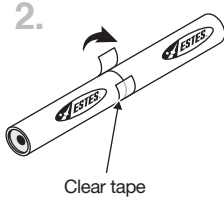
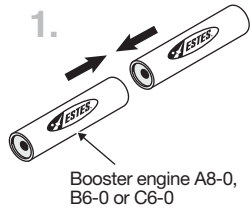
NOTE:
Recovery wadding and streamer must slide easily into body tube. If too tight, redo.

PREPARE FOR SINGLE STAGE LAUNCH

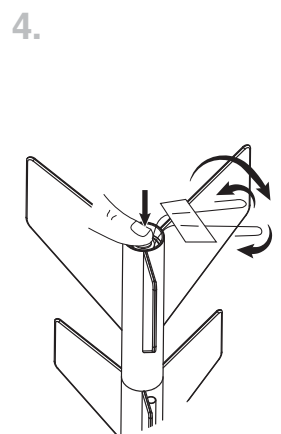
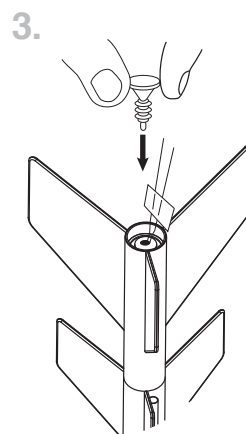
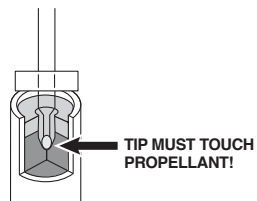
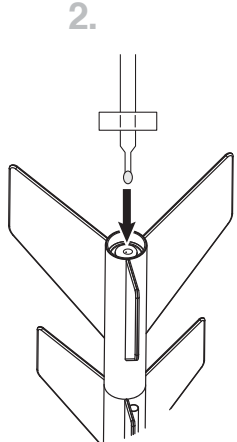
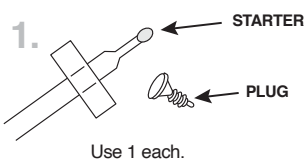


NOTE:
Place a piece of tape around engine to friction fit it in body.

PREPARE FOR 2 STAGE LAUNCH



PREPARE ENGINE



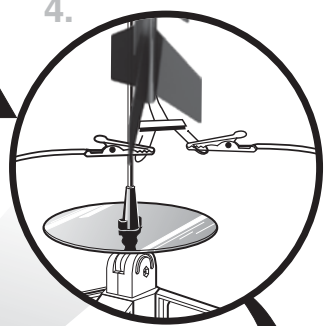
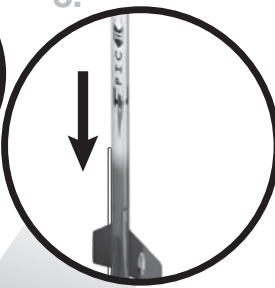
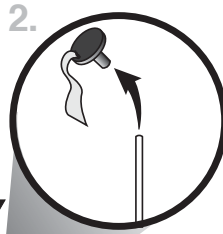
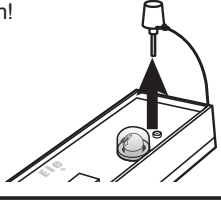
⚠ WARNING: FLAMMABLE

To avoid serious injury, read instructions & NAR Safety Code included with engines. **PREPARE YOUR ENGINE ONLY WHEN YOU ARE OUTSIDE AT THE LAUNCH SITE PREPARING TO LAUNCH.** If you do not use your prepared engine, remove the starter before storing your engine.

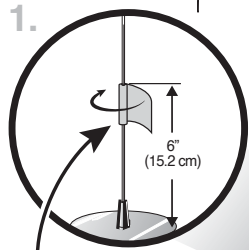
LAUNCH PROCEDURE

NOTE:

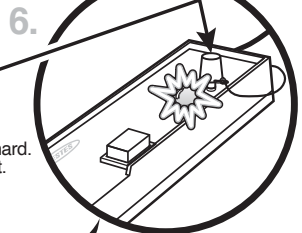
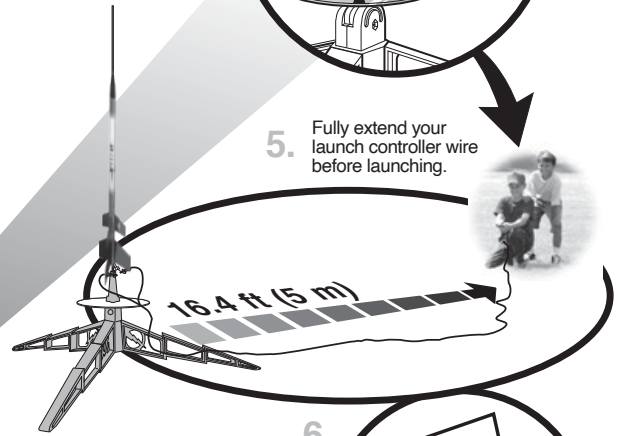
Key always out until final countdown!



5. Fully extend your launch controller wire before launching.



MASKING TAPE



KEY
Insert key, push down hard. Bulb will light.



While holding key down FIRMLY, press launch button until LIFTOFF!

NOTE:
Estimated weight : 1 oz. (28.3 g)

- ESTES LAUNCH SUPPLIES NEEDED**
(Sold Separately)
- Launch Pad
 - Launch Controller
 - Recovery Wadding
 - Starters (with engines)
 - Plugs (with engines)
 - Estes® Engines:
 - Rocket only: A8-5 (first launch), B6-6, C6-7
 - With booster: A8-0 (first launch), B6-0, C6-0

PRECAUTIONS



NAR SAFETY CODE



NO DRY GRASS OR WEEDS

PRE-LAUNCH CHECK For safety, never launch a damaged rocket. Check the rocket's body, nose cone and fins. Also, check the engine mount, recovery system and launch lug(s). Repair any damage before launching the rocket.
FLYING YOUR ROCKET Choose a large field (500 ft [152 m] square) free of dry weeds and brown grass. The larger the launch area, the better your chance of recovering your rocket. Football fields and playgrounds are great. Launch only with little or no wind and good visibility. Always follow the National Association of Rocketry (NAR) SAFETY CODE.
MISFIRES TAKE THE KEY OUT OF THE CONTROLLER. WAIT ONE MINUTE BEFORE GOING NEAR THE ROCKET! Disconnect the starter clips and remove the engine. Take the plug and starter out of the engine. If the starter has burned, it worked but did not ignite the engine because it was not touching the propellant inside the engine. Put a new starter all the way inside the engine without bending it. Push the plug in place. Repeat the steps under Countdown and Launch.

