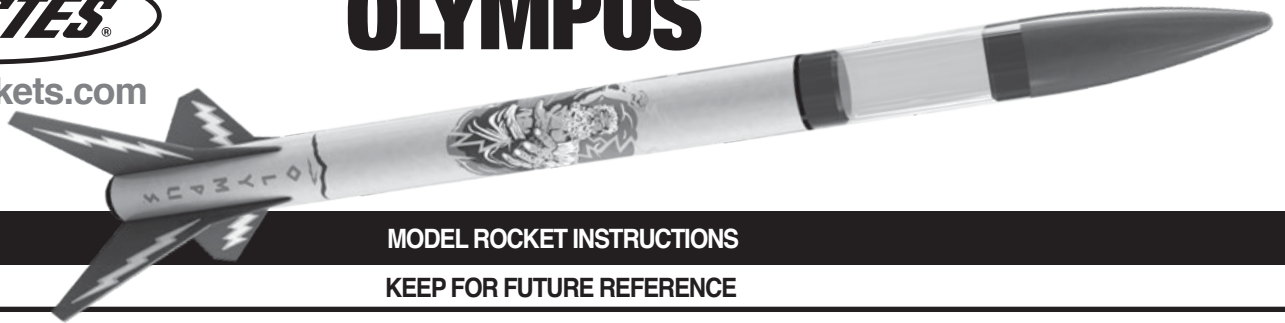




EstesRockets.com

OLYMPUS™

7293



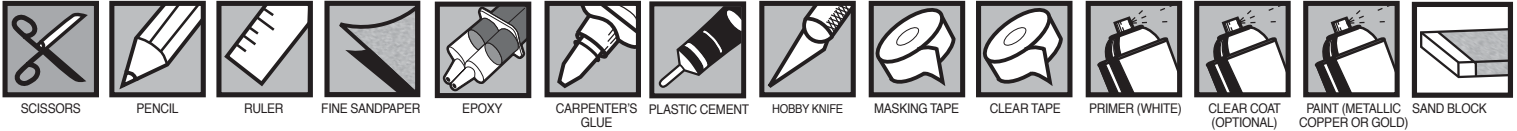
MODEL ROCKET INSTRUCTIONS

KEEP FOR FUTURE REFERENCE

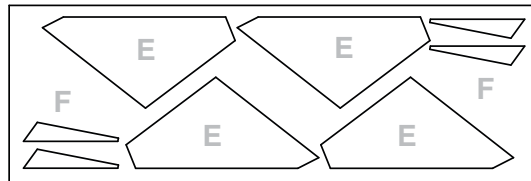
IMPORTANT: Please record date found on decal and keep for future reference. _____

READ ALL INSTRUCTIONS. Make sure you have all parts and supplies. Test fit all parts before applying glue.

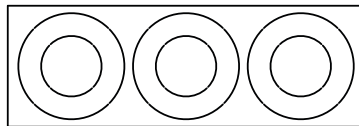
SUPPLIES



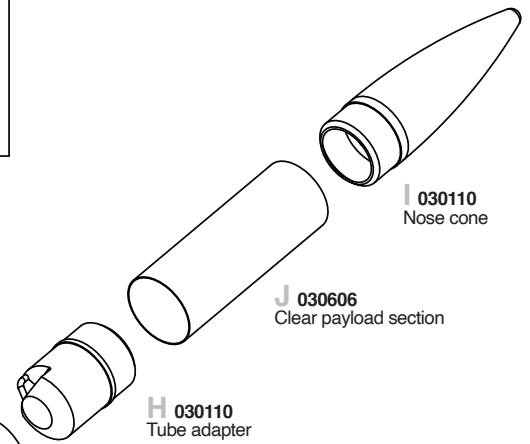
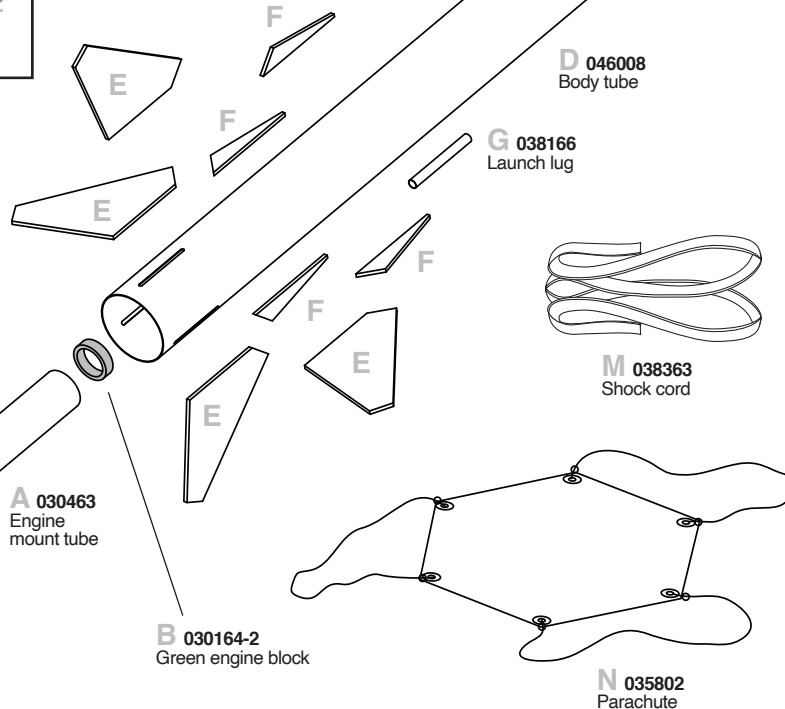
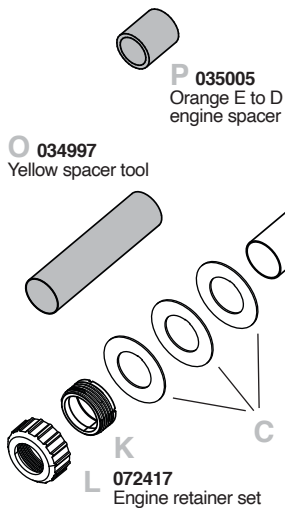
09001-7293
Waterslide decal



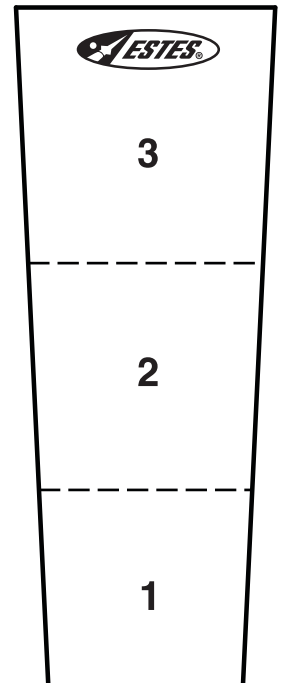
090051-7293
Laser cut balsa sheet



C 090052-7293
Laser cut centering rings



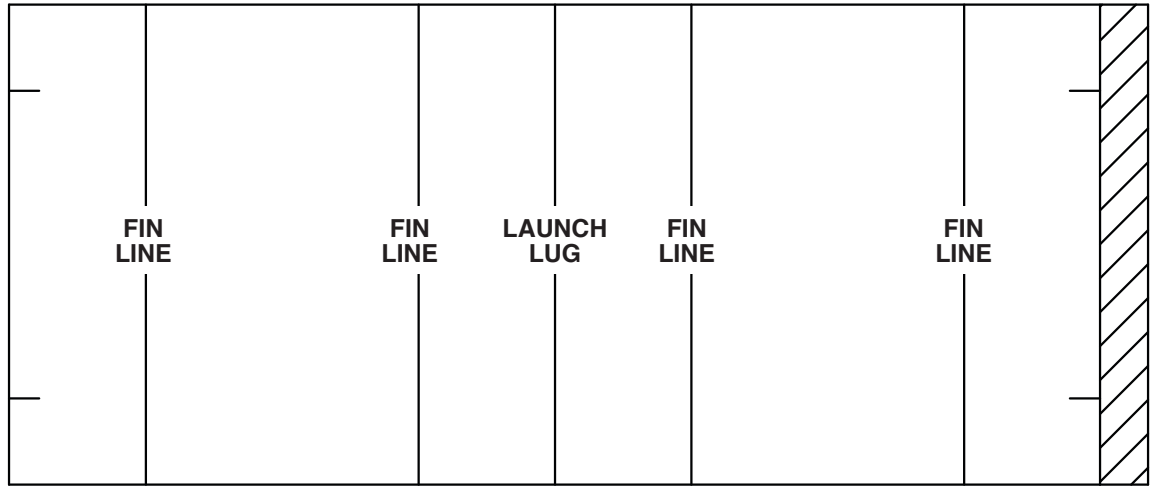
SHOCK CORD MOUNT



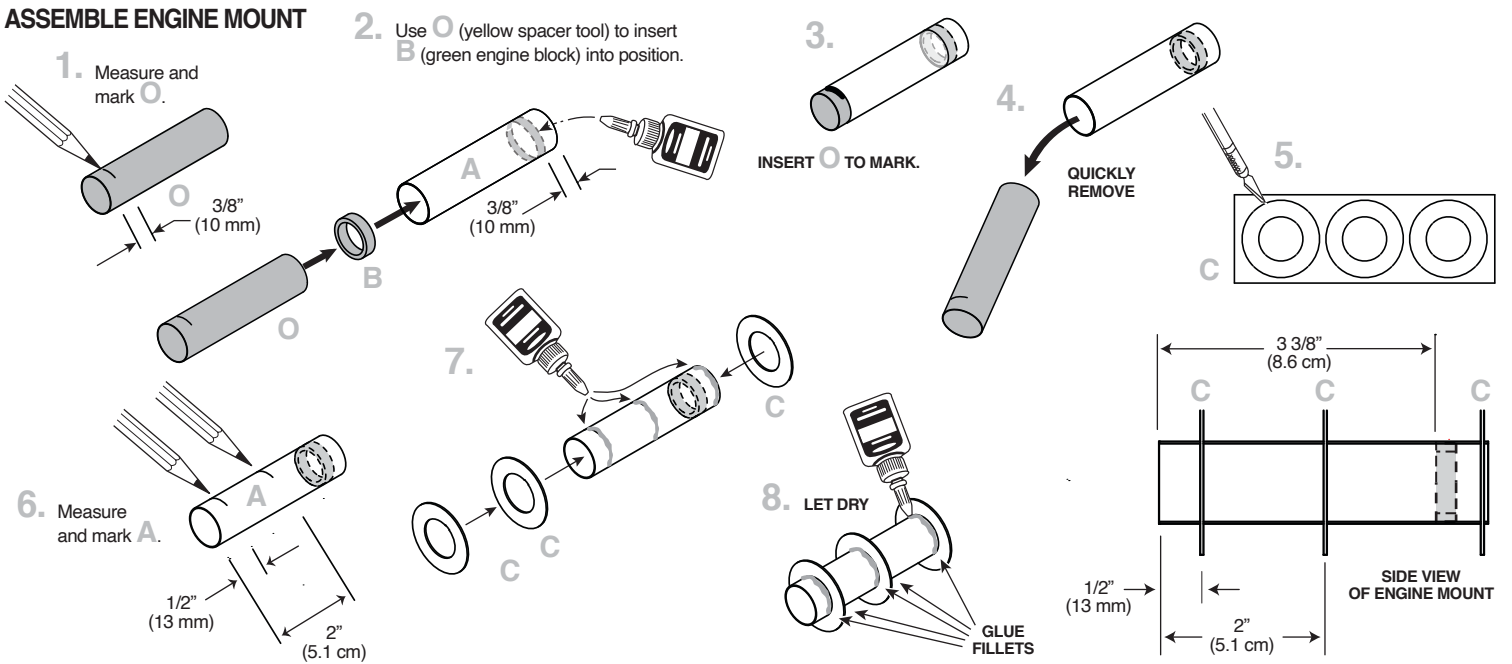
Make a copy if you want to keep instructions.

TUBE MARKING GUIDE

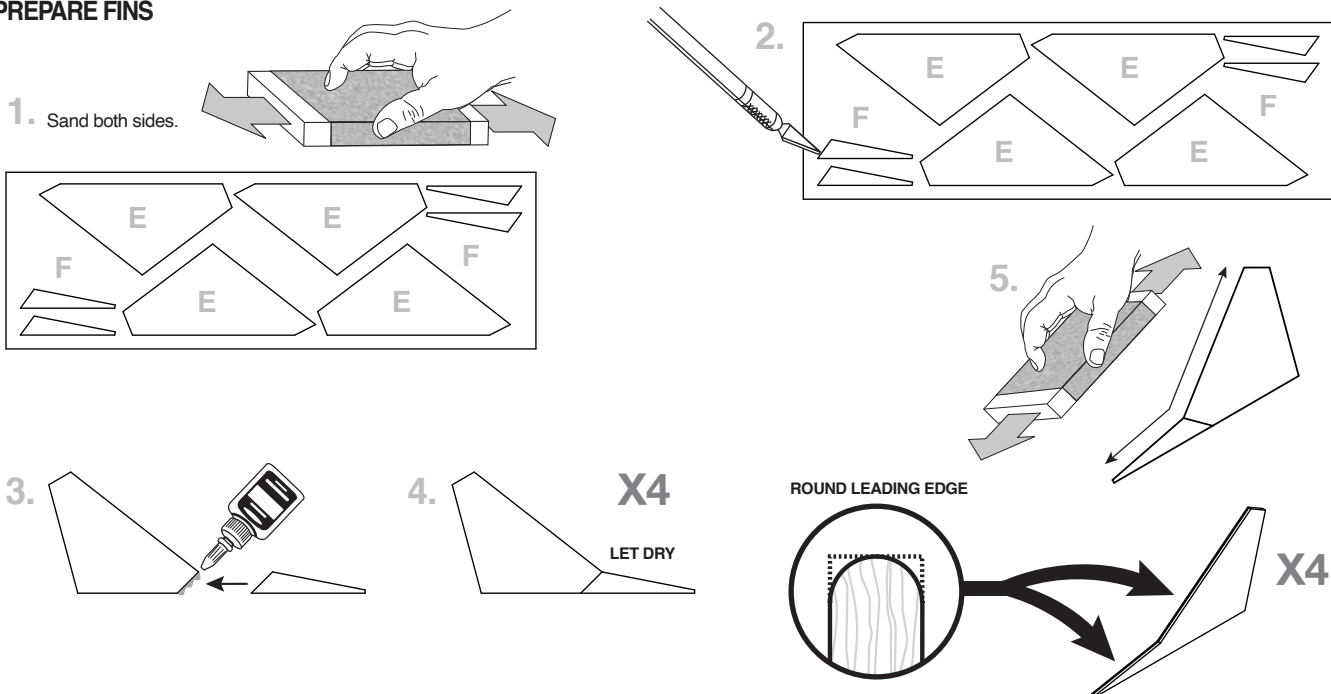
Make a copy if you want to keep instructions.



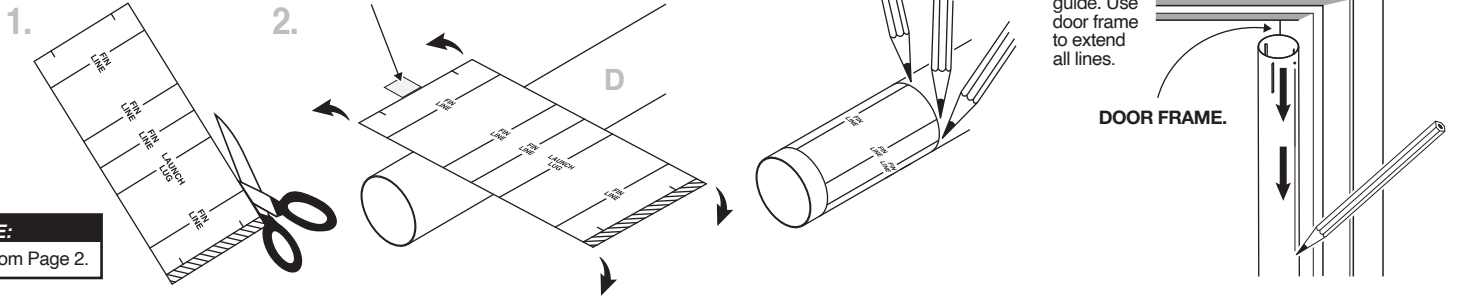
ASSEMBLE ENGINE MOUNT



PREPARE FINS

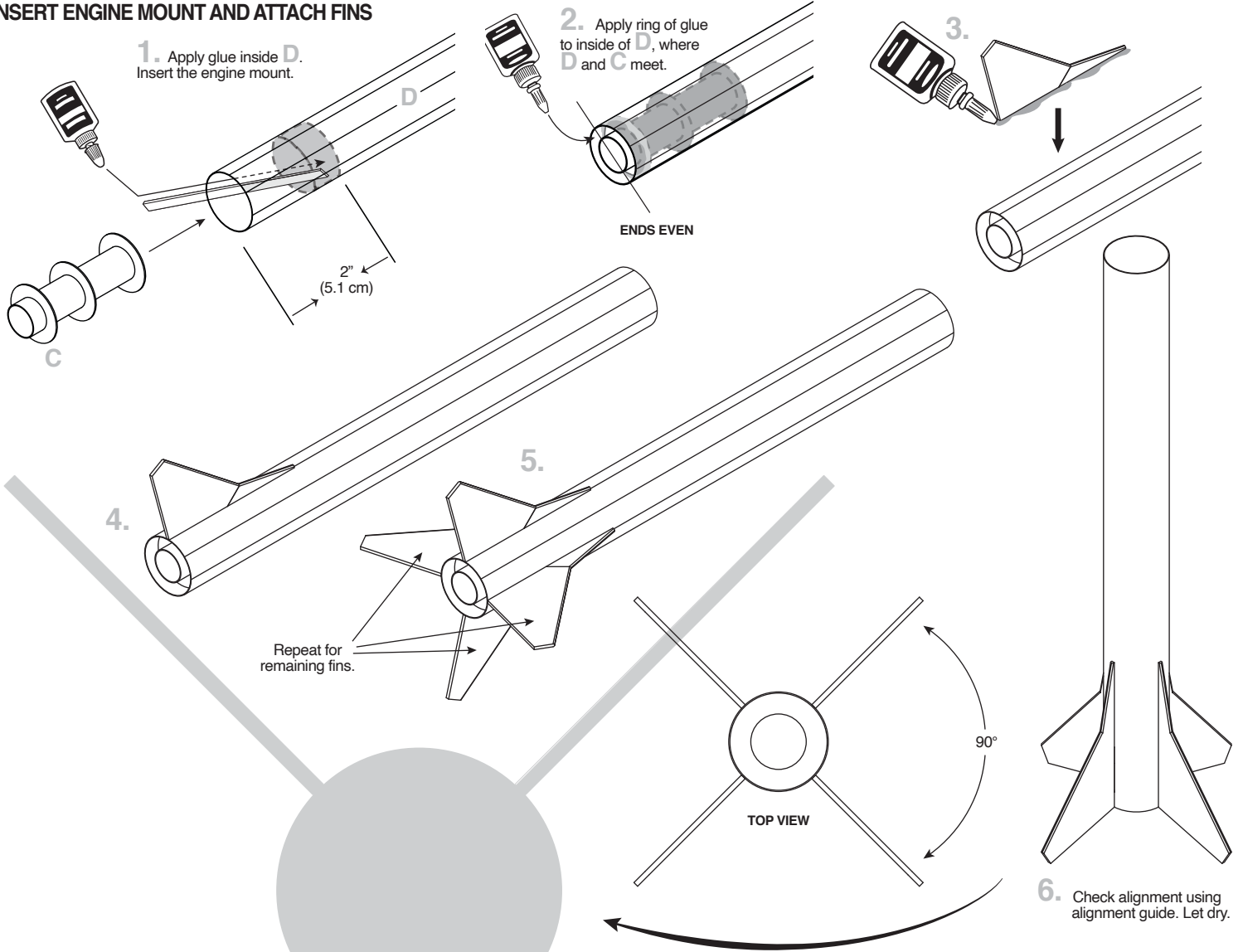


MARK TUBE

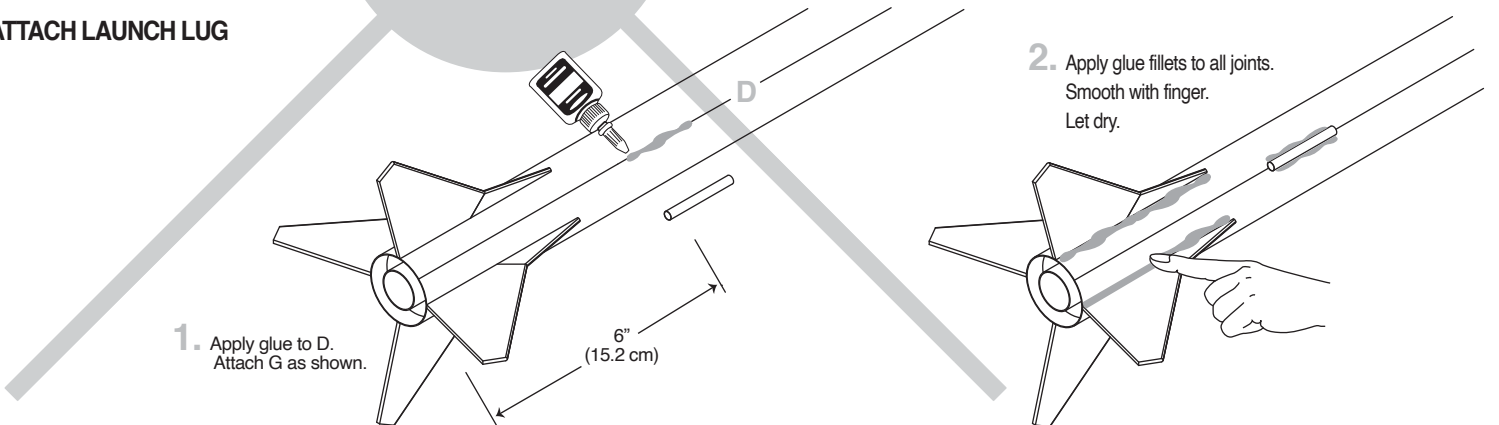


NOTE:
Cut from Page 2.

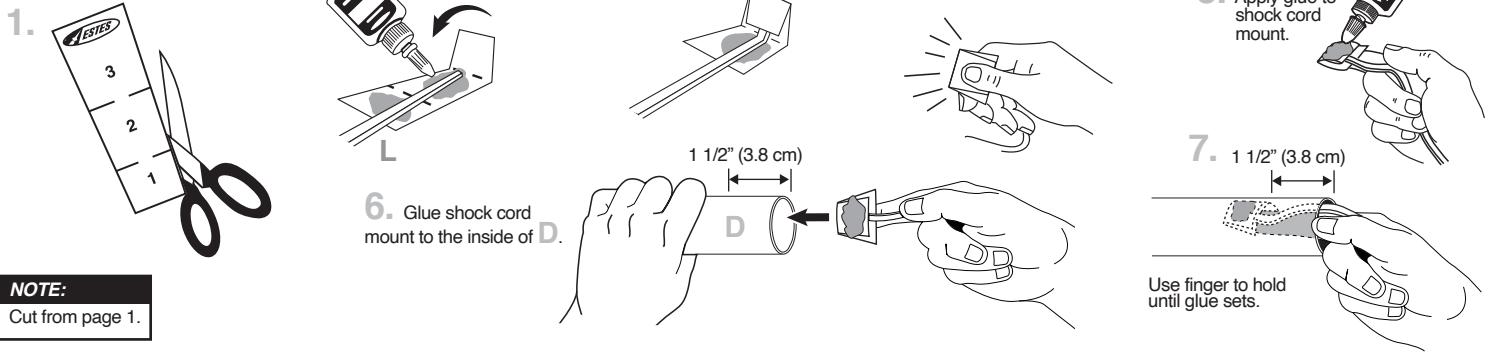
INSERT ENGINE MOUNT AND ATTACH FINS



ATTACH LAUNCH LUG

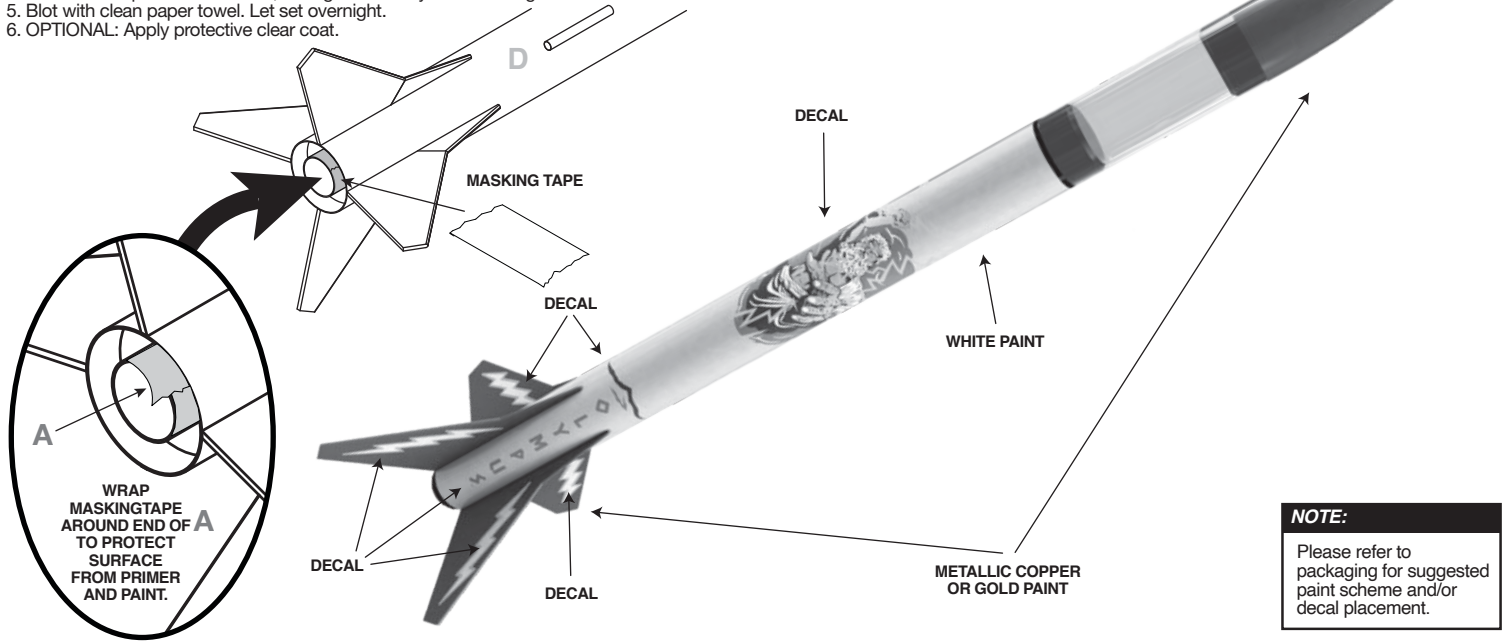


INSTALL SHOCK CORD

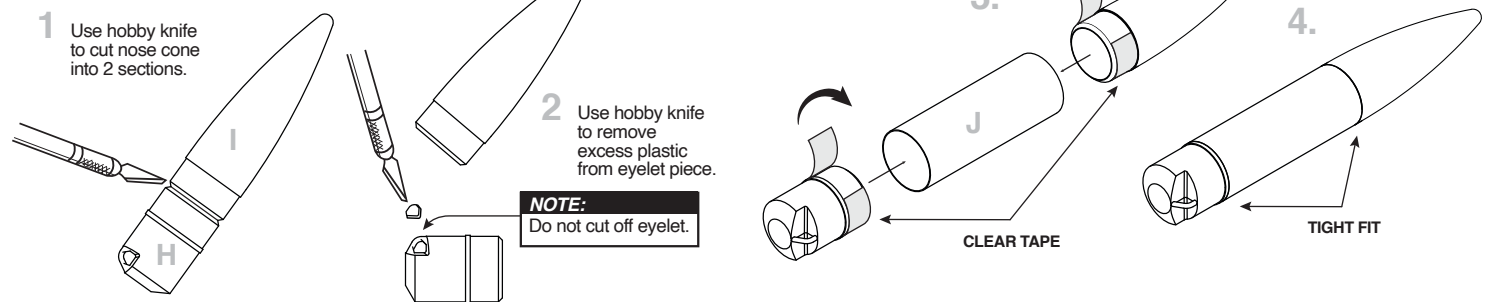


ROCKET FINISHING

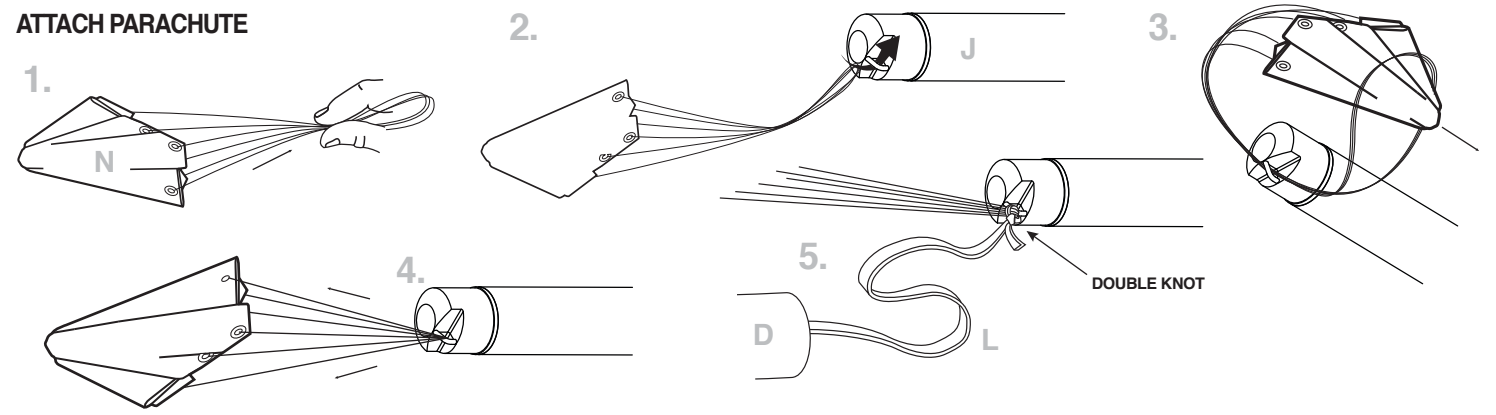
1. Spray rocket with white primer, let dry, and sand. Repeat until rocket is smooth, then paint. Apply decals only after paint is dry.
2. Cut decals from sheet, trimming close to edge.
3. One at a time, place in warm water until decal curls and begins to relax.
4. Remove and position on rocket, sliding decal away from backing material.
5. Blot with clean paper towel. Let set overnight.
6. OPTIONAL: Apply protective clear coat.



ASSEMBLE PAYLOAD SECTION

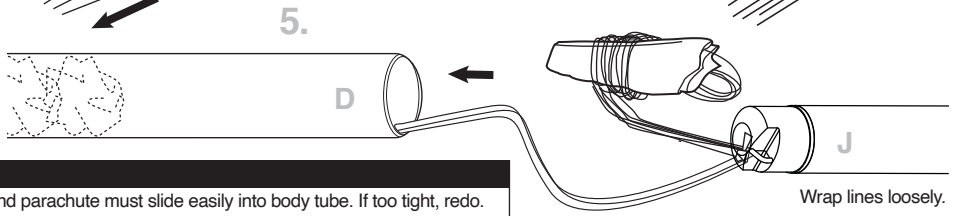
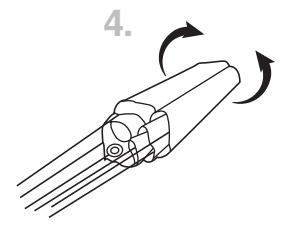
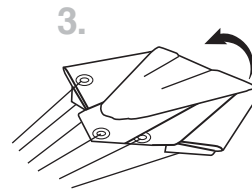
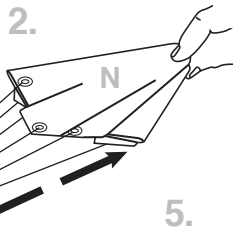
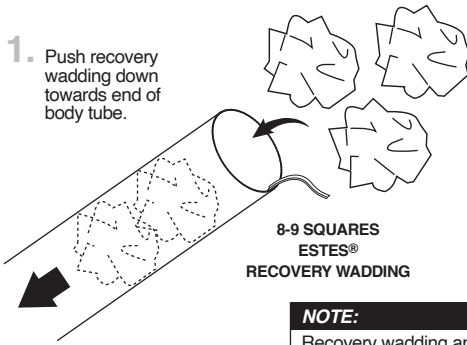


ATTACH PARACHUTE



PREPARE RECOVERY SYSTEM

1. Push recovery wadding down towards end of body tube.



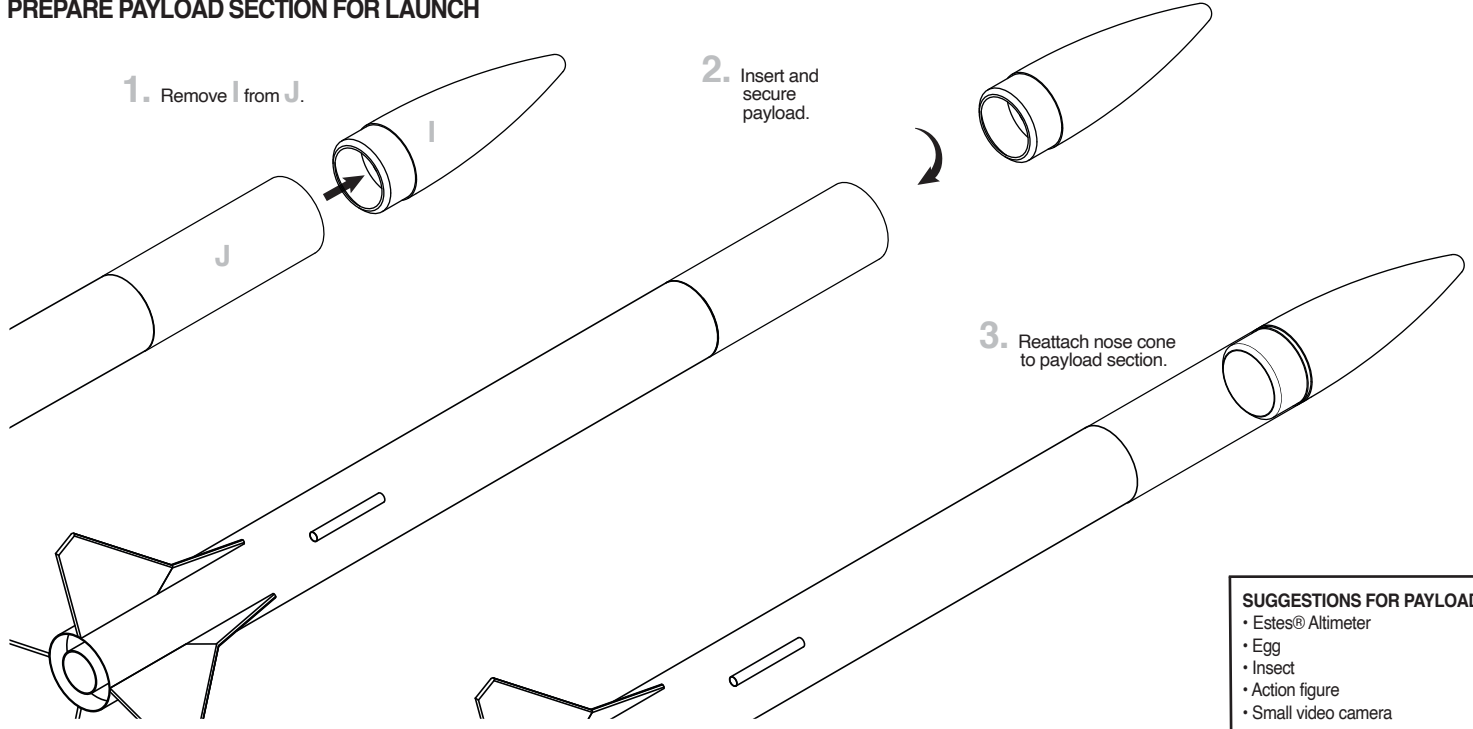
NOTE:
Recovery wadding and parachute must slide easily into body tube. If too tight, redo.

PREPARE PAYLOAD SECTION FOR LAUNCH

1. Remove I from J.

2. Insert and secure payload.

3. Reattach nose cone to payload section.

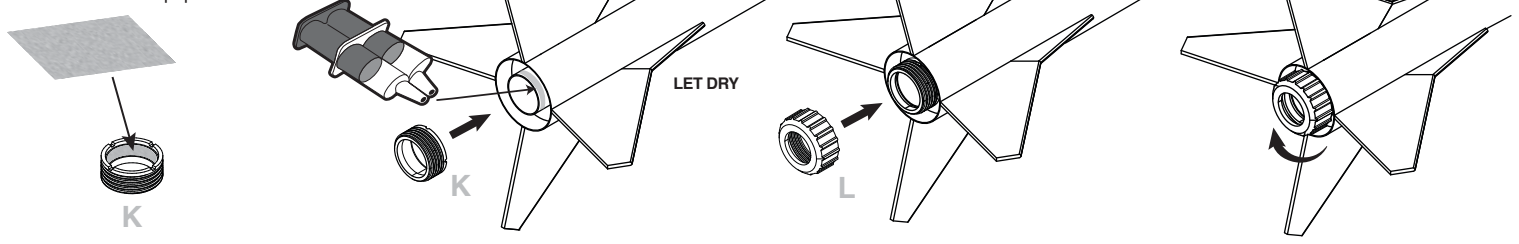


- SUGGESTIONS FOR PAYLOAD**
- Estes® Altimeter
 - Egg
 - Insect
 - Action figure
 - Small video camera

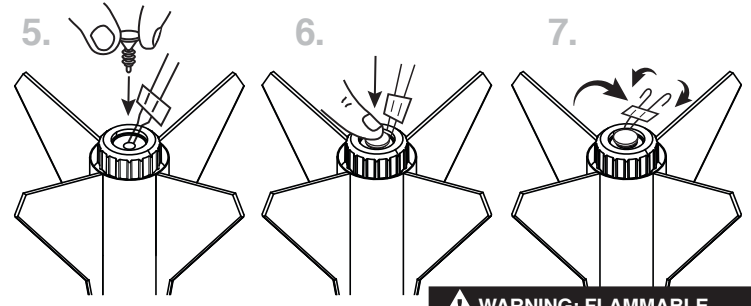
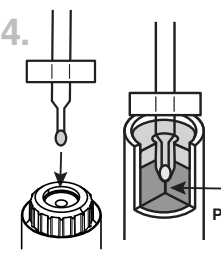
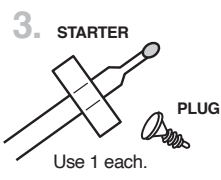
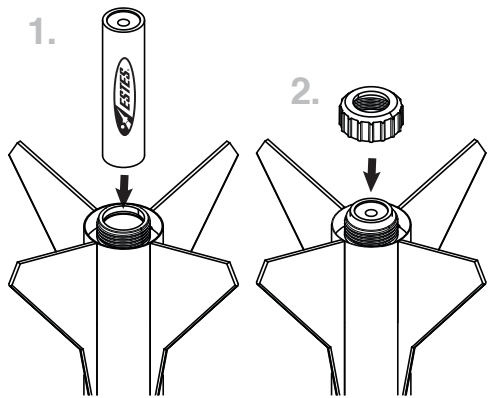
INSTALL ENGINE RETAINER

1. Rough up inside surface of K with sandpaper.

2. Attach K with epoxy. Mix and apply according to epoxy instructions. Let dry.



PREPARE ENGINE



NOTE:
If you are using a D engine, insert orange spacer, then engine.

P 035005

⚠ WARNING: FLAMMABLE
To avoid serious injury, read instructions & NAR Safety Code included with engines. **PREPARE YOUR ENGINE ONLY WHEN YOU ARE OUTSIDE AT THE LAUNCH SITE PREPARING TO LAUNCH.** If you do not use your prepared engine, remove the starter before storing your engine.

COUNTDOWN AND LAUNCH

ESTES® LAUNCH SUPPLIES NEEDED

(Sold Separately)

- Porta-Pad® E Launch Pad
 - E Launch Controller or Pro Series II Launch Controller
 - 3/16 in. Maxi™ Launch Rod
 - Recovery Wadding
 - Starters (with engines)
 - Plugs (with engines)
 - Estes® Engines
- With Payload: D12-3, E12-4
Without Payload: D12-5, E12-6

NOTE:

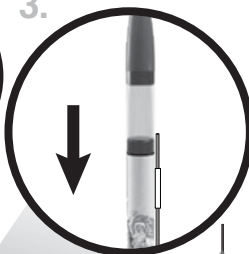
Key always out until final countdown!



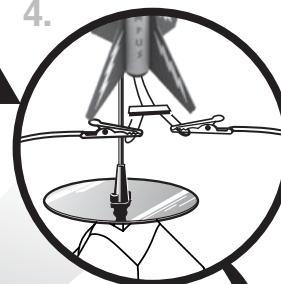
2.



3.



4.



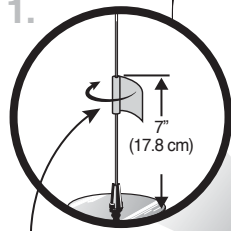
5.



NOTE:

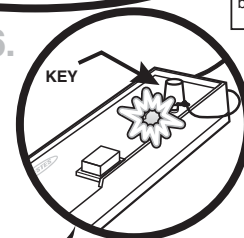
Fully extend your launch controller wire before launching.

1.



MASKING TAPE

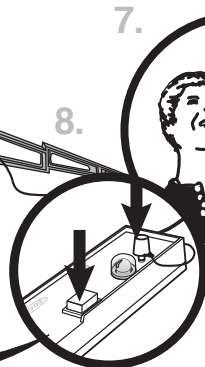
6.



Insert key, push down hard. Bulb will light.

7.

8.



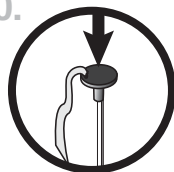
While holding key down FIRMLY, press launch button until LIFTOFF!

4... 3... 2... 1...

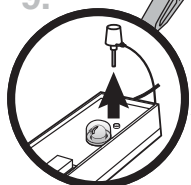
NOTE:

Estimated weight: 3.9 oz. (110.6 g)

10.



9.



PRECAUTIONS



NAR
Safety
Code



NO DRY GRASS
OR WEEDS

PRE-LAUNCH CHECK For safety, never launch a damaged rocket. Check the rocket's body, nose cone and fins. Also, check the engine mount, recovery system and launch lug(s). Repair any damage before launching the rocket.

FLYING YOUR ROCKET Choose a large field (500 ft. [152 m] square) free of dry weeds and brown grass. The larger the launch area, the better your chance of recovering your rocket. Football fields and playgrounds are great. Launch only with little or no wind and good visibility. Always follow the National Association of Rocketry (NAR) SAFETY CODE (enclosed).

MISFIRES TAKE THE KEY OUT OF THE CONTROLLER. WAIT ONE MINUTE BEFORE GOING NEAR THE ROCKET. Disconnect the micro-clips and remove the engine. Take the plug and starter out of the engine. A burned starter means the starter tip was not touching engine propellant. Install a new starter; be sure the tip is touching propellant inside the engine. Push the plug in place. Repeat steps under Countdown and Launch.

