





# LUNAR SCOUT™

7290

EstesRockets.com



## MODEL ROCKET INSTRUCTIONS

KEEP FOR FUTURE REFERENCE

**IMPORTANT:** Please record date found on decal and keep for future reference. \_\_\_\_\_

*Read all instructions. Make sure you have all parts and supplies. Test fit all parts before applying glue. Product color and shape may vary.*



MASKING TAPE



YELLOW GLUE



HOBBY KNIFE



SCISSORS



PENCIL



RULER



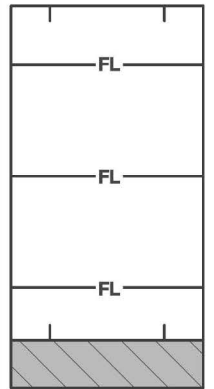
PRIMER (WHITE)



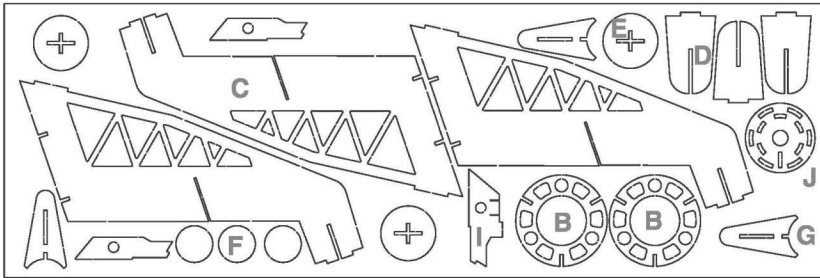
PAINT (WHITE, RED, GOLD)



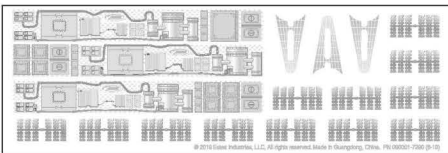
CLEAR COAT (OPTIONAL)



Tube marking guide  
(Make a copy if you want to keep instructions.)



090052-7290  
Laser cut card stock



090001-7290  
Water-slide decal



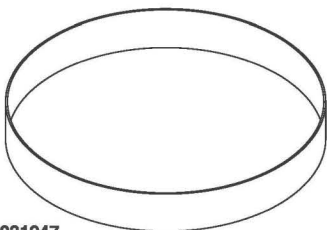
H 030181  
Red tube coupler



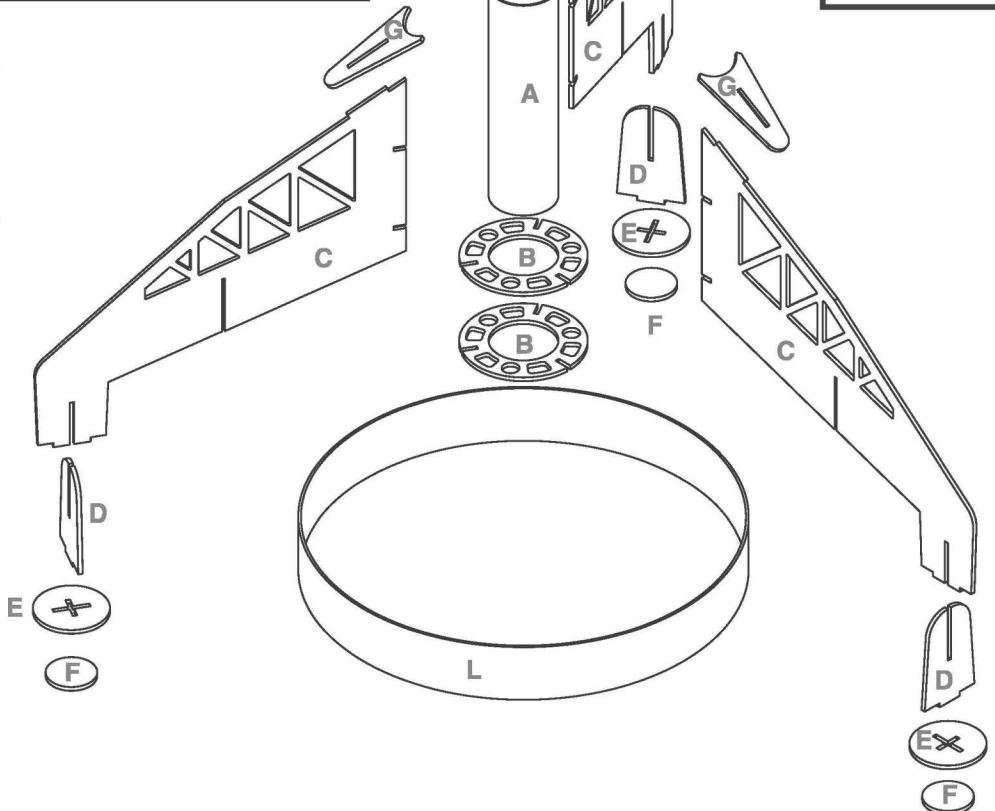
A 030304  
Body tube



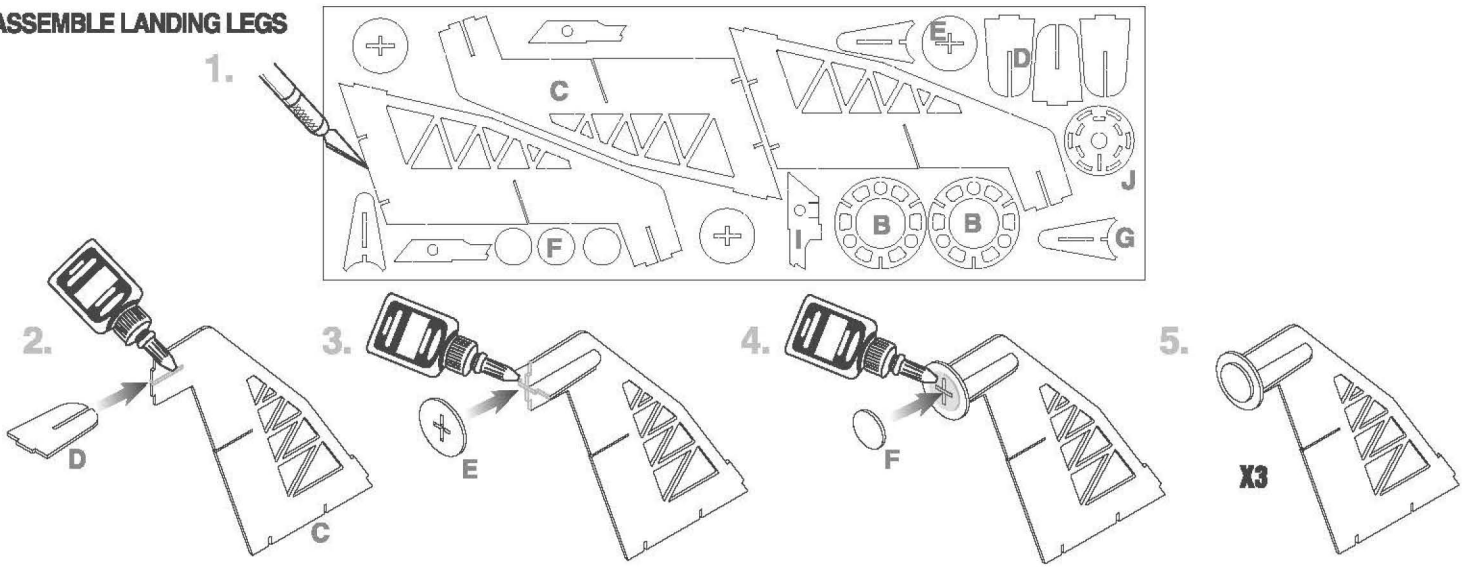
K 038176  
Detail part



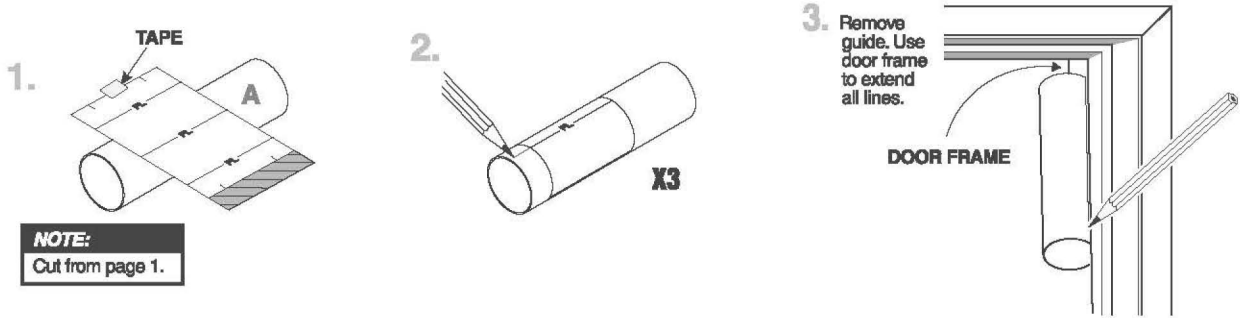
L 031947  
Large ring



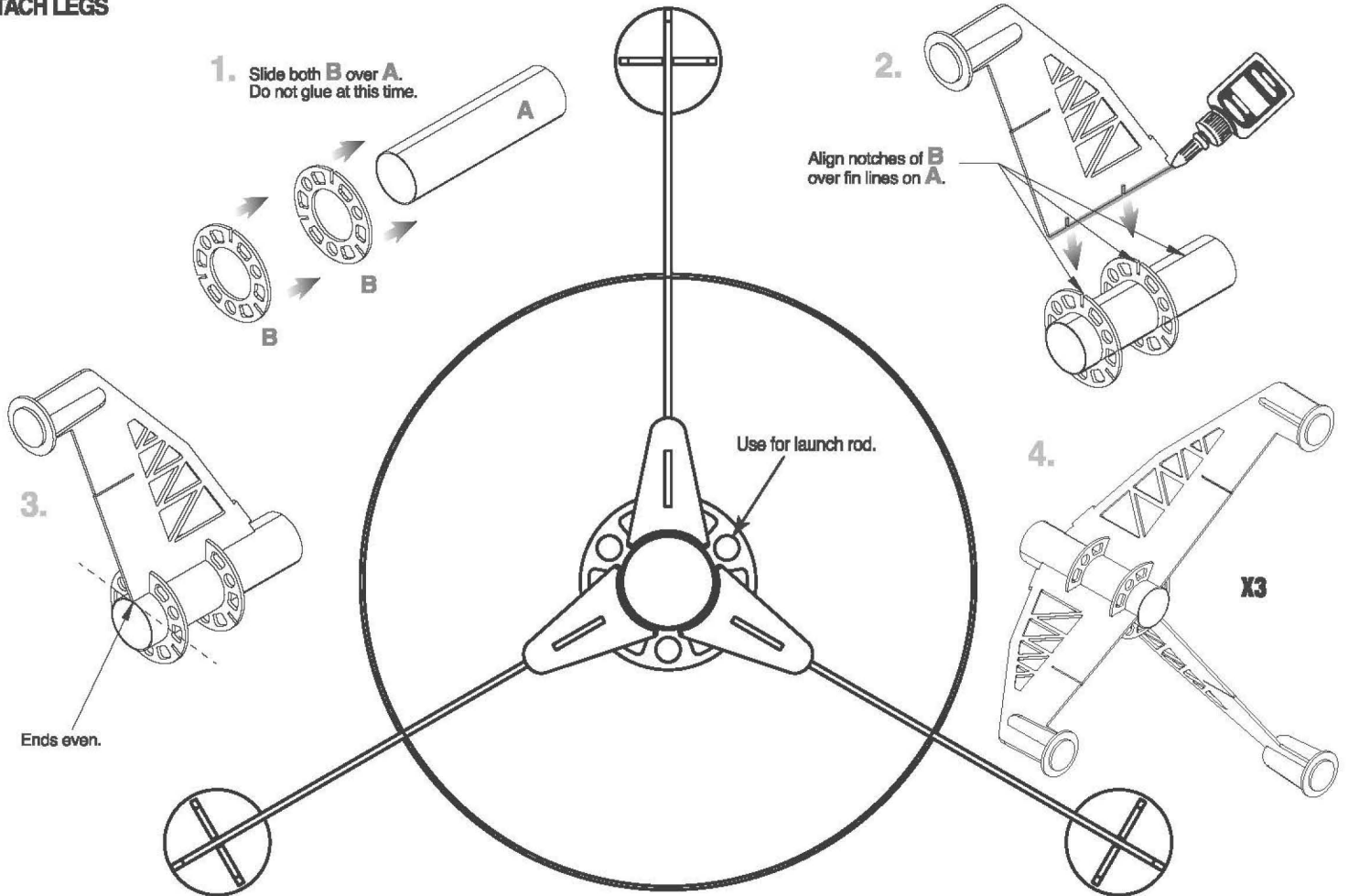
**ASSEMBLE LANDING LEGS**



**MARK BODY TUBE**



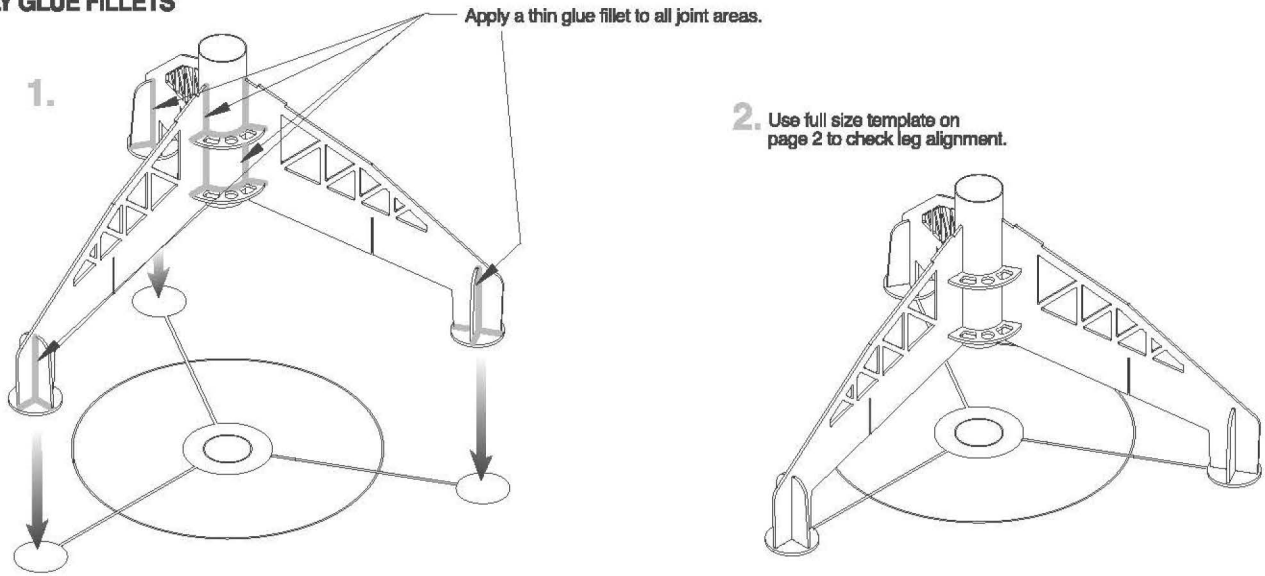
**ATTACH LEGS**



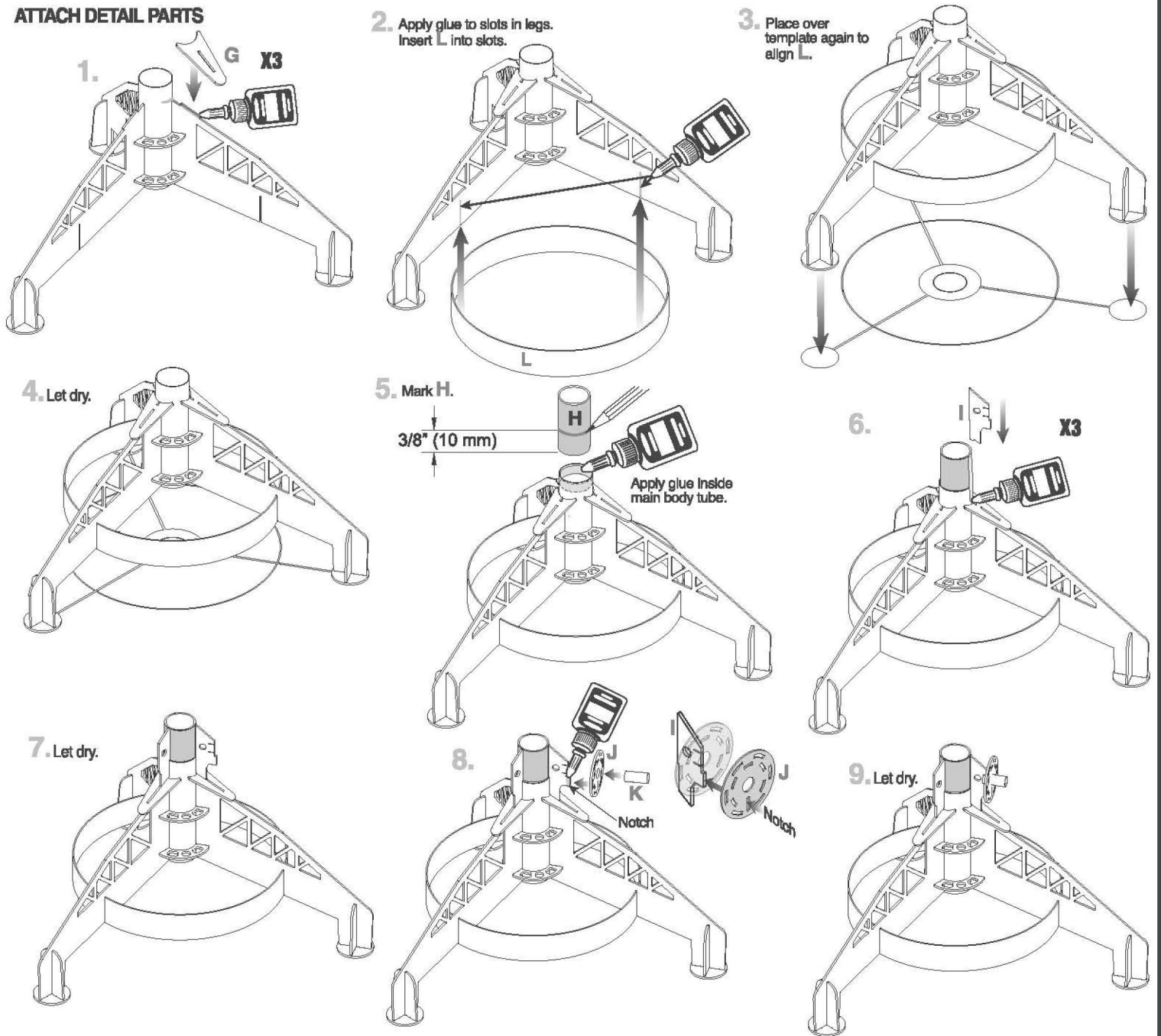
**FULL SIZE TOP VIEW TEMPLATE**

Use full size template to check leg alignment.

## APPLY GLUE FILLETS

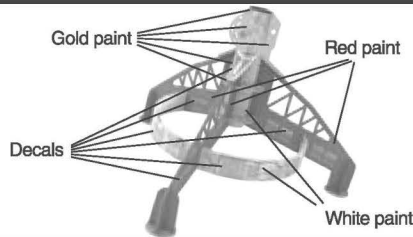


## ATTACH DETAIL PARTS

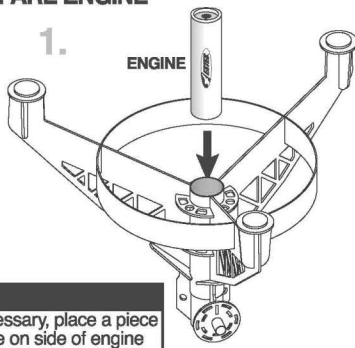


## ROCKET FINISHING

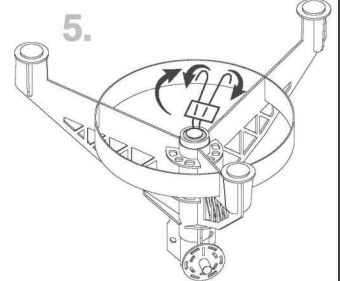
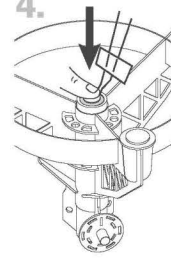
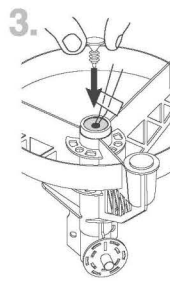
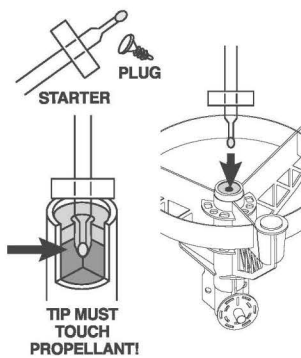
1. Spray rocket with white primer, let dry, then paint. Apply decals after paint is dry.
2. Cut decals from sheet, trimming close to edge.
3. One at a time, place in warm water until decal curls and begins to relax.
4. Remove and position on rocket, sliding decal away from backing material.
5. Blot with clean paper towel. Let set overnight.
6. OPTIONAL: Apply protective clear coat.



## PREPARE ENGINE



2. Use 1 each.



**NOTE:**  
If necessary, place a piece of tape on side of engine to friction fit it in body.

### ⚠ WARNING: FLAMMABLE

To avoid serious injury, read instructions & NAR Safety Code included with engines. **PREPARE YOUR ENGINE ONLY WHEN YOU ARE OUTSIDE AT THE LAUNCH SITE PREPARING TO LAUNCH.** If you do not use your prepared engine, remove the starter before storing your engine.

## COUNTDOWN & LAUNCH

**NOTE:**  
Key always out until final countdown!

**1. MASKING TAPE**

**2.**

**3.**

**4.**

**5. 16.4 ft. (5 m)**

**6. KEY**

**7. 4... 3... 2... 1...**

**8.**

**9.**

**10.**

**NOTE:**  
Fully extend your launch controller wire before launching.

Insert key, push down hard. Bulb will light.

While holding key down **FIRMLY**, press launch button until **LIFTOFF!**

### ESTES® LAUNCH SUPPLIES NEEDED

- (Sold Separately)
- Launch Pad
  - Launch Controller
  - Starters (with engines)
  - Plugs (with engines)
  - Estes® Engines: 1/2A3-2T, A3-4T, A10-3T, A10-0T.

## PRECAUTIONS



NAR SAFETY CODE



NO DRY GRASS OR WEEDS

**PRE-LAUNCH CHECK** For safety, never launch a damaged rocket. Check the rocket's body, nose cone and fins. Also, check the engine mount, recovery system and launch lug(s). Repair any damage before launching the rocket.

**FLYING YOUR ROCKET** Choose a large field (500 ft. [152 m] square) free of dry weeds and brown grass. The larger the launch area, the better your chance of recovering your rocket. Football fields and playgrounds are great. Launch only with little or no wind and good visibility. Always follow the National Association of Rocketry (NAR) SAFETY CODE (enclosed).

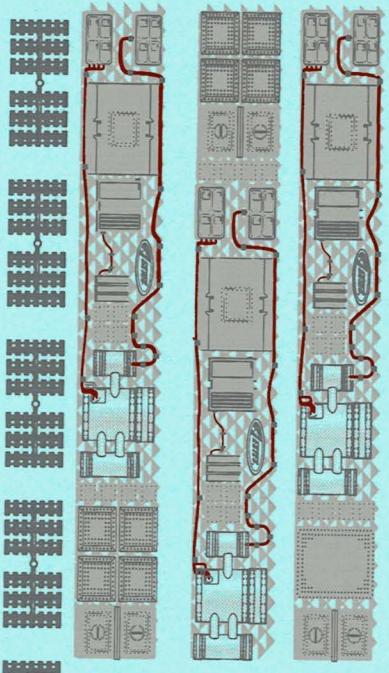
**MISFIRES TAKE THE KEY OUT OF THE CONTROLLER. WAIT ONE MINUTE BEFORE GOING NEAR THE ROCKET.** Disconnect the micro-clips and remove the engine. Take the plug and starter out of the engine. A burned starter means the starter tip was not touching engine propellant. Install a new starter; be sure the tip is touching propellant inside the engine. Push the plug in place. Repeat steps under Countdown and Launch.



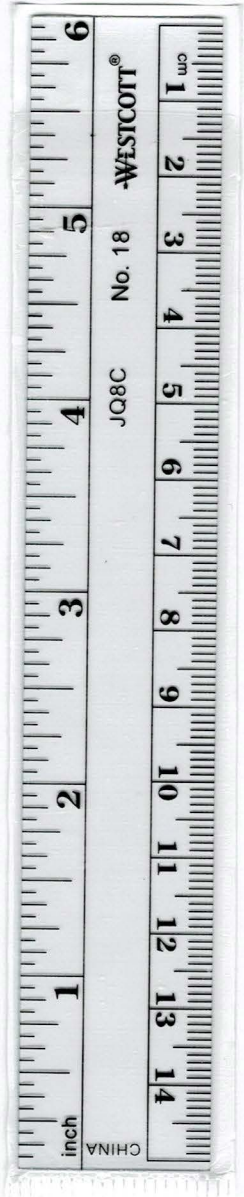
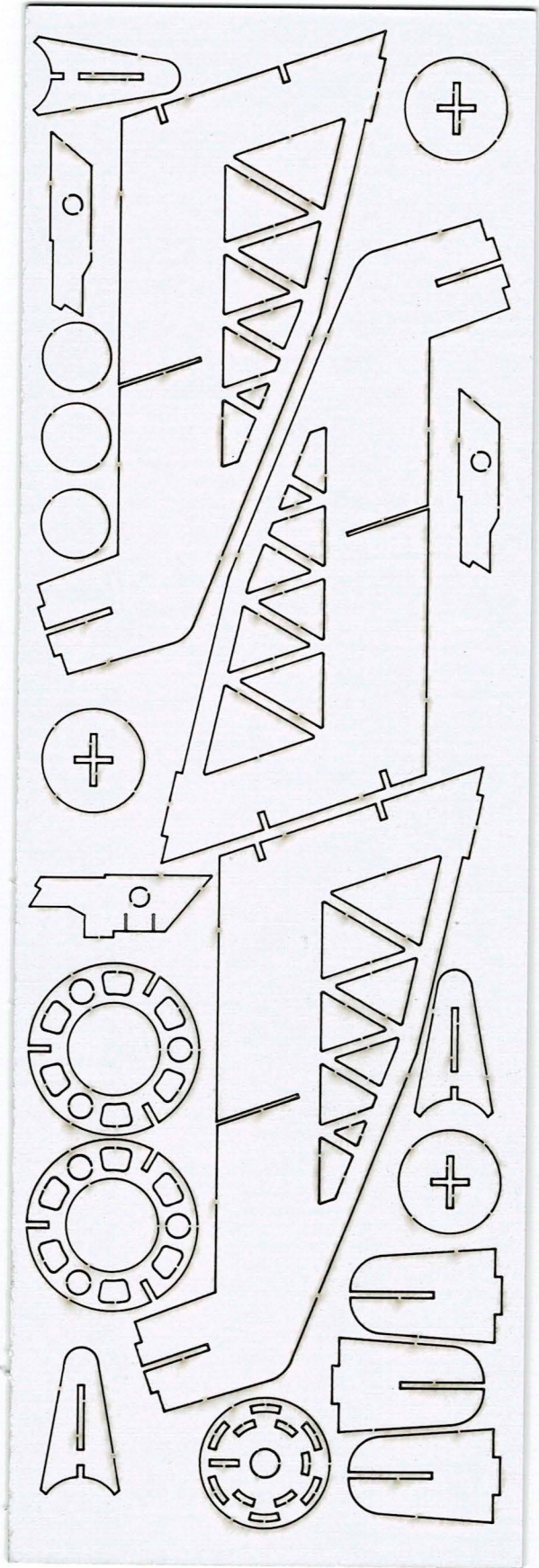
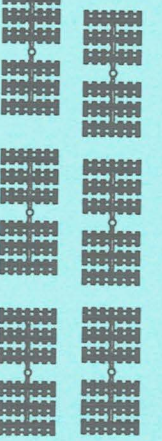


10/16/19

© 2019 Estes Industries, LLC. All rights reserved. Made in Guangdong, China. PN 090001-7290 (9-19)



# AVA



# SPACE CORPS™ LUNAR SCOUT™

FLYING MODEL ROCKET KIT



REQUIRES  
**200**  
**61**  
Use an A10-01 Engine  
(When applying engine seal)

17243-01, A3-01, A10-01

Length: 4 in.  
10.2 cm

Diameter: 0.74 in.  
19 mm

Recovery: Featherweight

EST7260

47776 07260

© 2007 Estes Industries, LLC  
All Rights Reserved

QTY: 1

