





EstesRockets.com

VAPOR™

7294



One rocket — two looks!
Decals included for both!

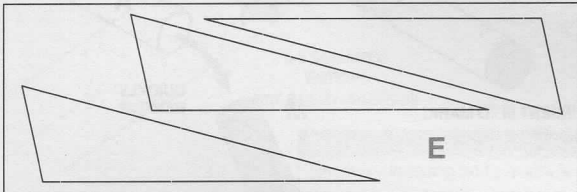
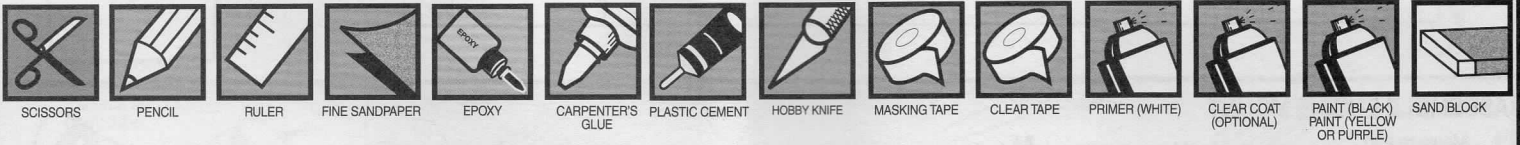
MODEL ROCKET INSTRUCTIONS

KEEP FOR FUTURE REFERENCE

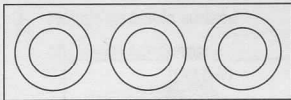
IMPORTANT: Please record date found on decal and keep for future reference. _____

READ ALL INSTRUCTIONS. Make sure you have all parts and supplies. Test fit all parts before applying glue.

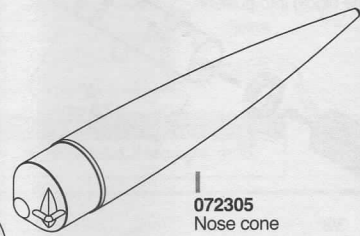
SUPPLIES



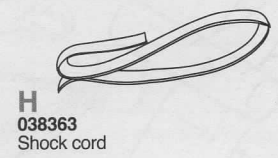
E
090051-7294
Laser cut balsa sheet



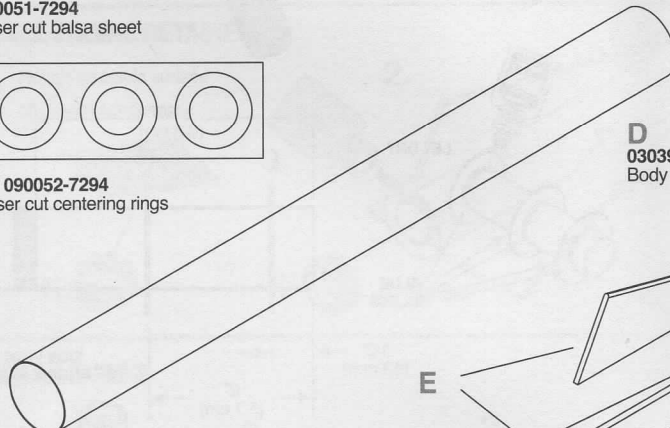
C
090052-7294
Laser cut centering rings



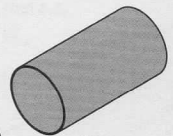
I
072305
Nose cone



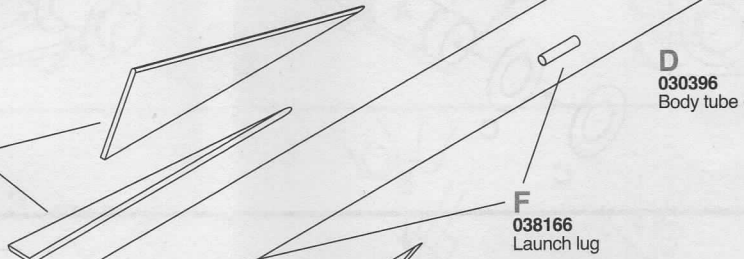
H
038363
Shock cord



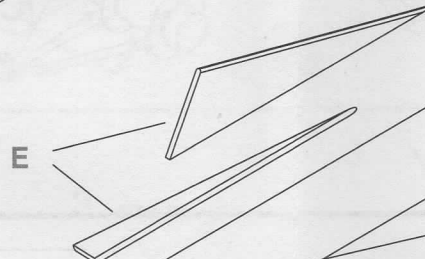
D
030396
Body tube (top)



G
031777
Red tube coupler



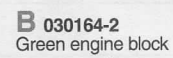
D
030396
Body tube (bottom)



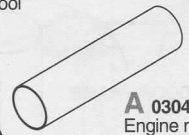
F
038166
Launch lug



M
034997
Yellow spacer tool



B
030164-2
Green engine block



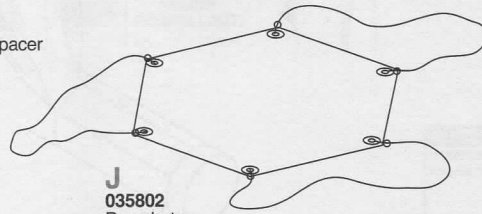
A
030463
Engine mount tube



L
072417
Engine retainer set



N
035005
Orange E to D engine spacer



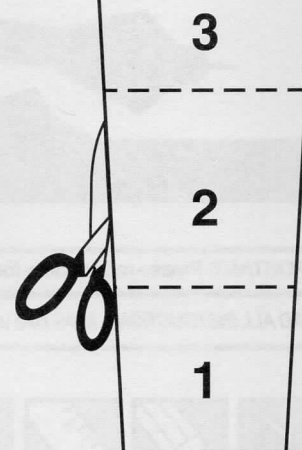
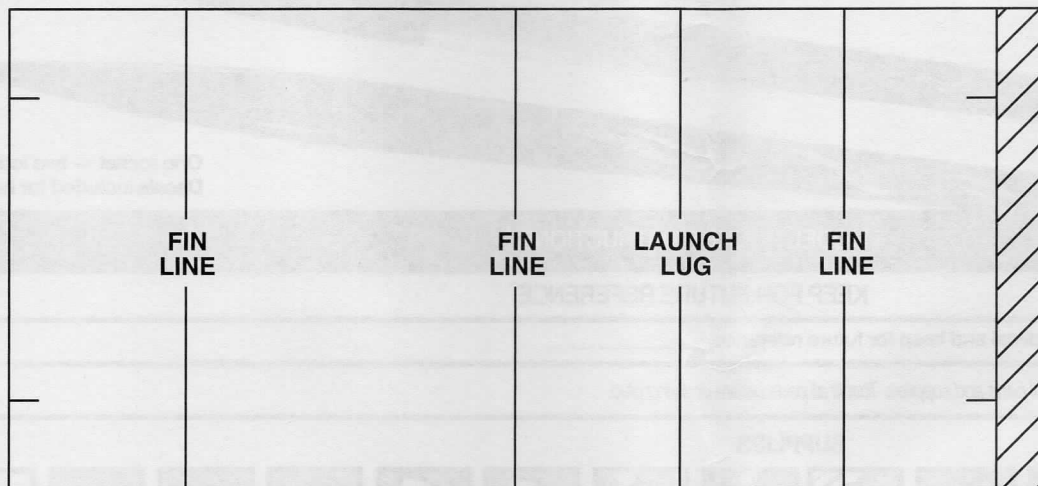
J
035802
Parachute



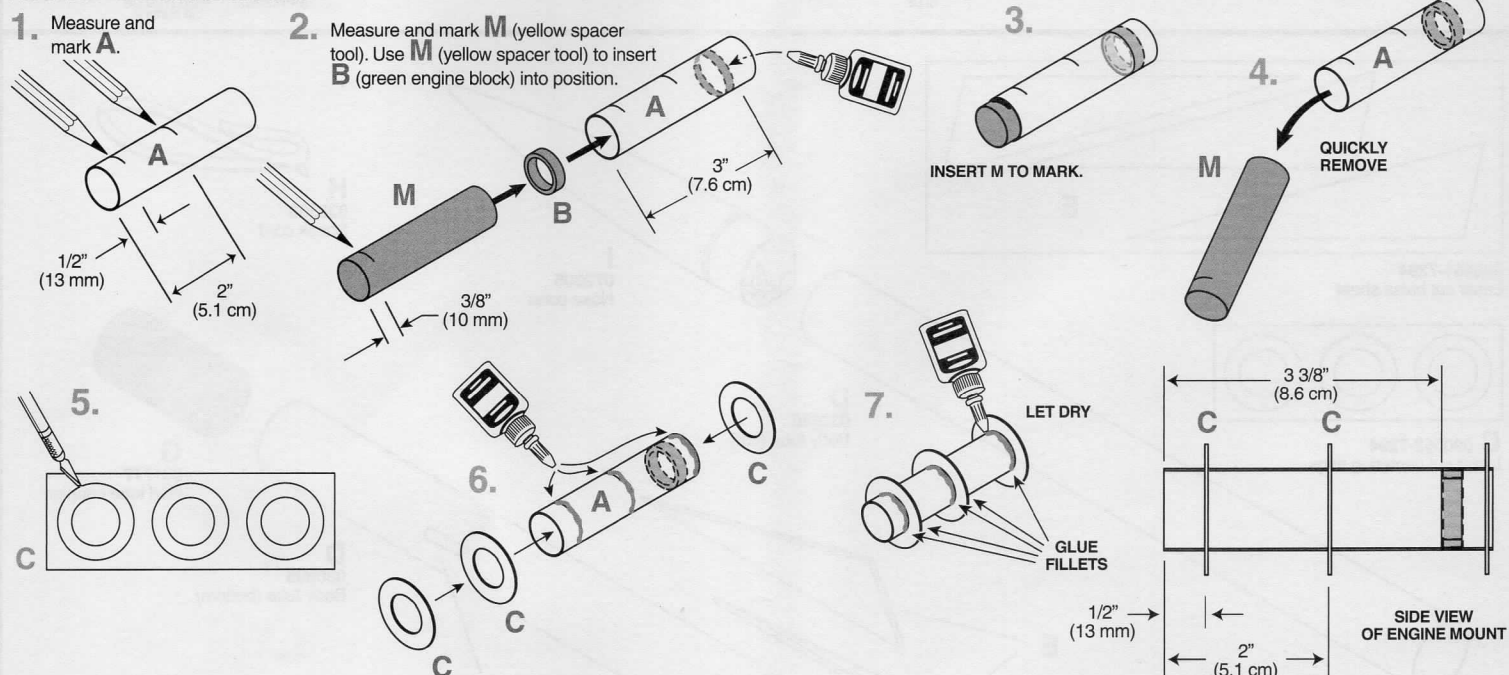
090001-7294
Waterslide decal

TUBE MARKING GUIDE & SHOCK CORD MOUNT

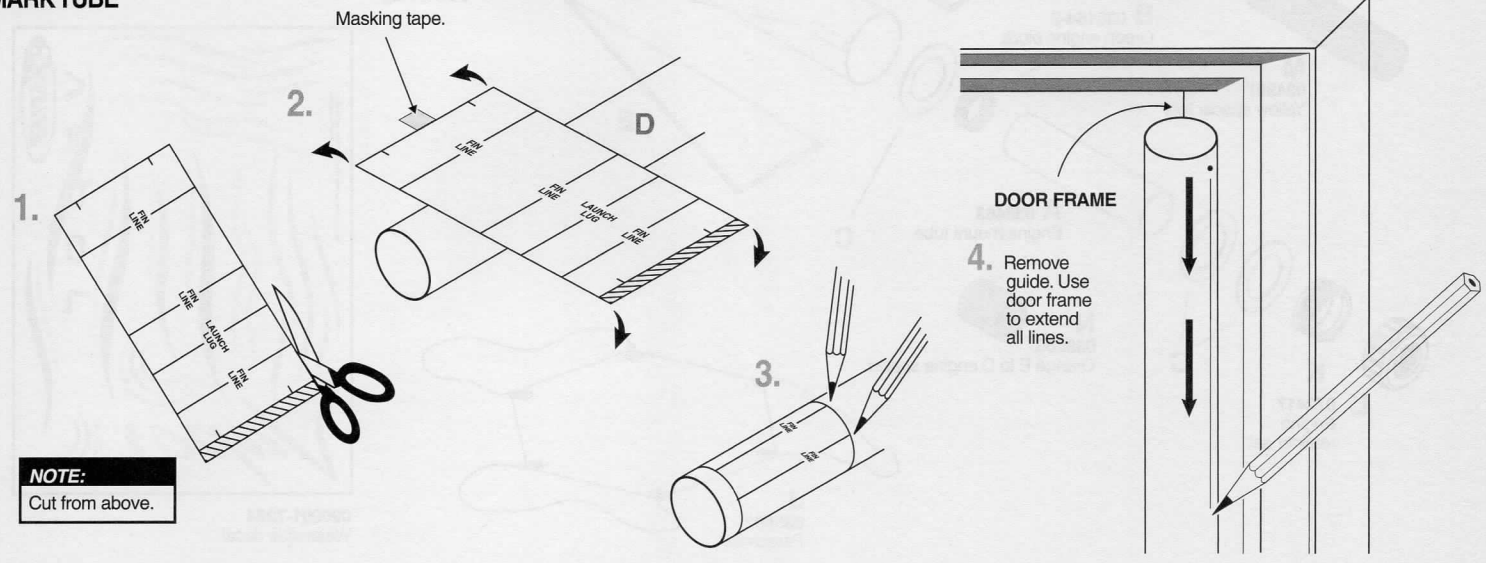
Make a copy if you want to keep instructions.



ASSEMBLE ENGINE MOUNT

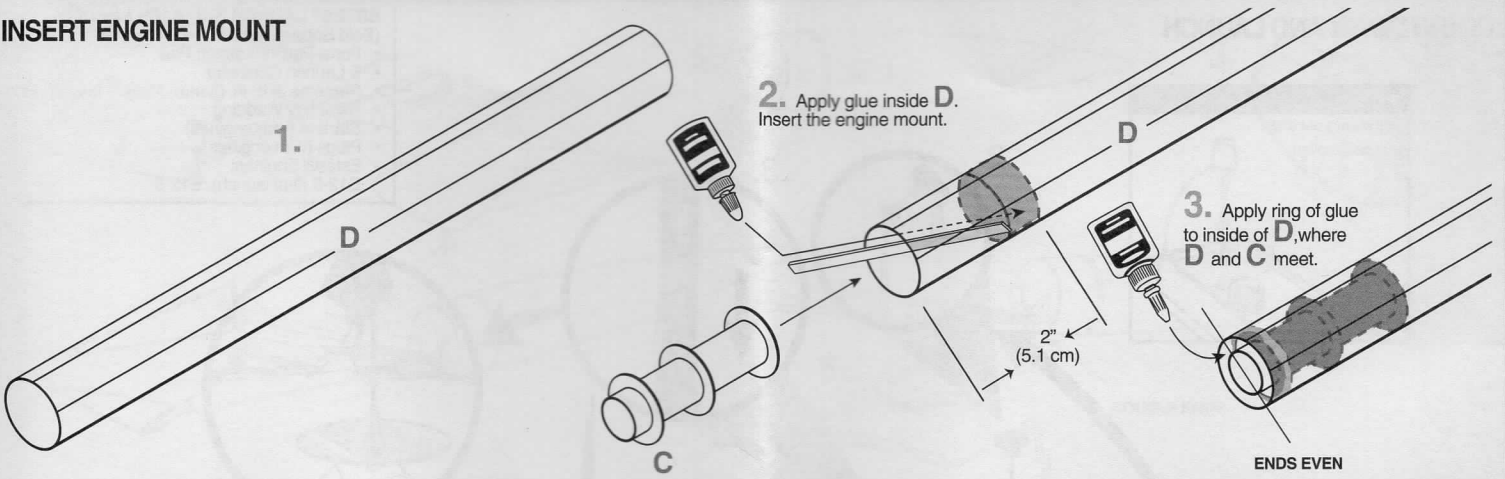


MARK TUBE



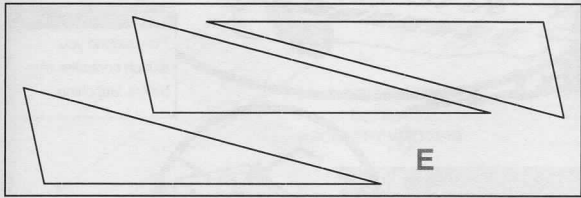
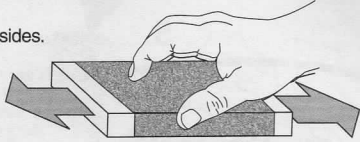
NOTE:
Cut from above.

INSERT ENGINE MOUNT

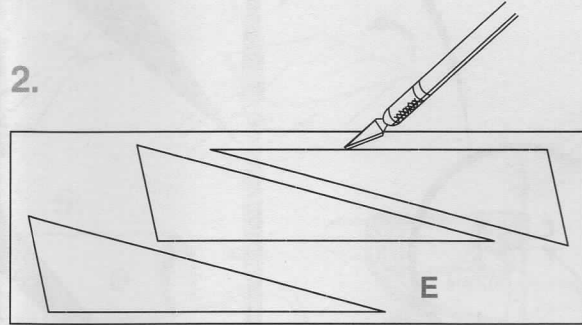


PREPARE AND ATTACH FINS

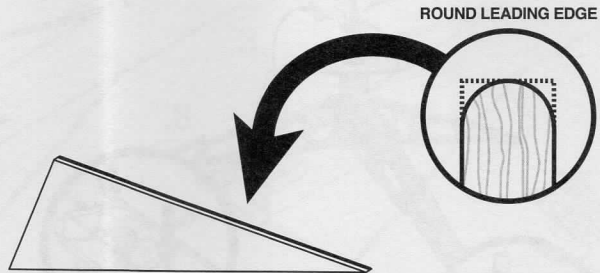
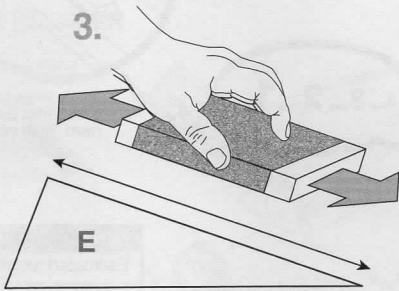
1. Sand both sides.



2.

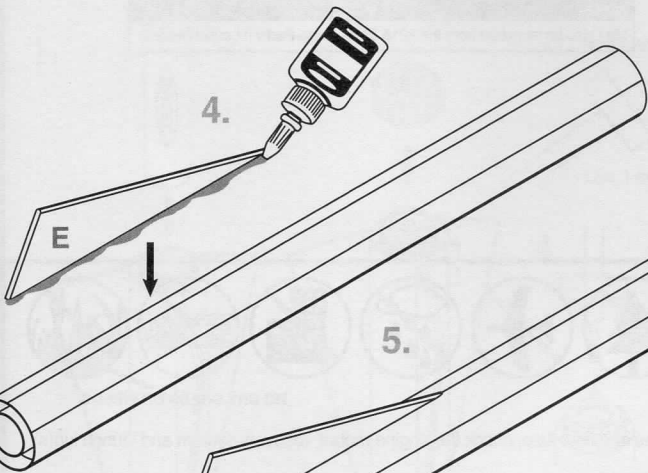


3.

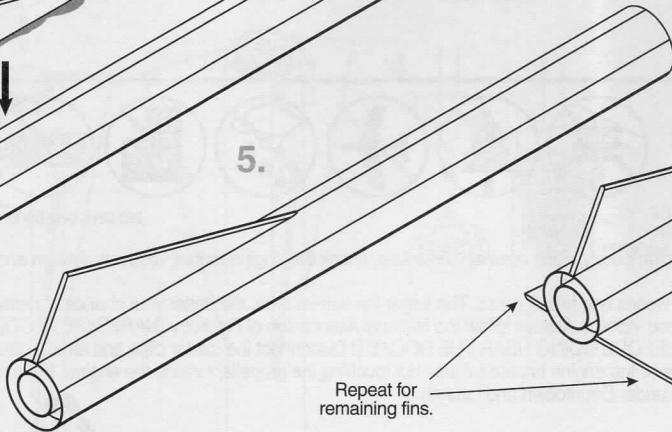


X3

4.



5.



Repeat for remaining fins.

6.

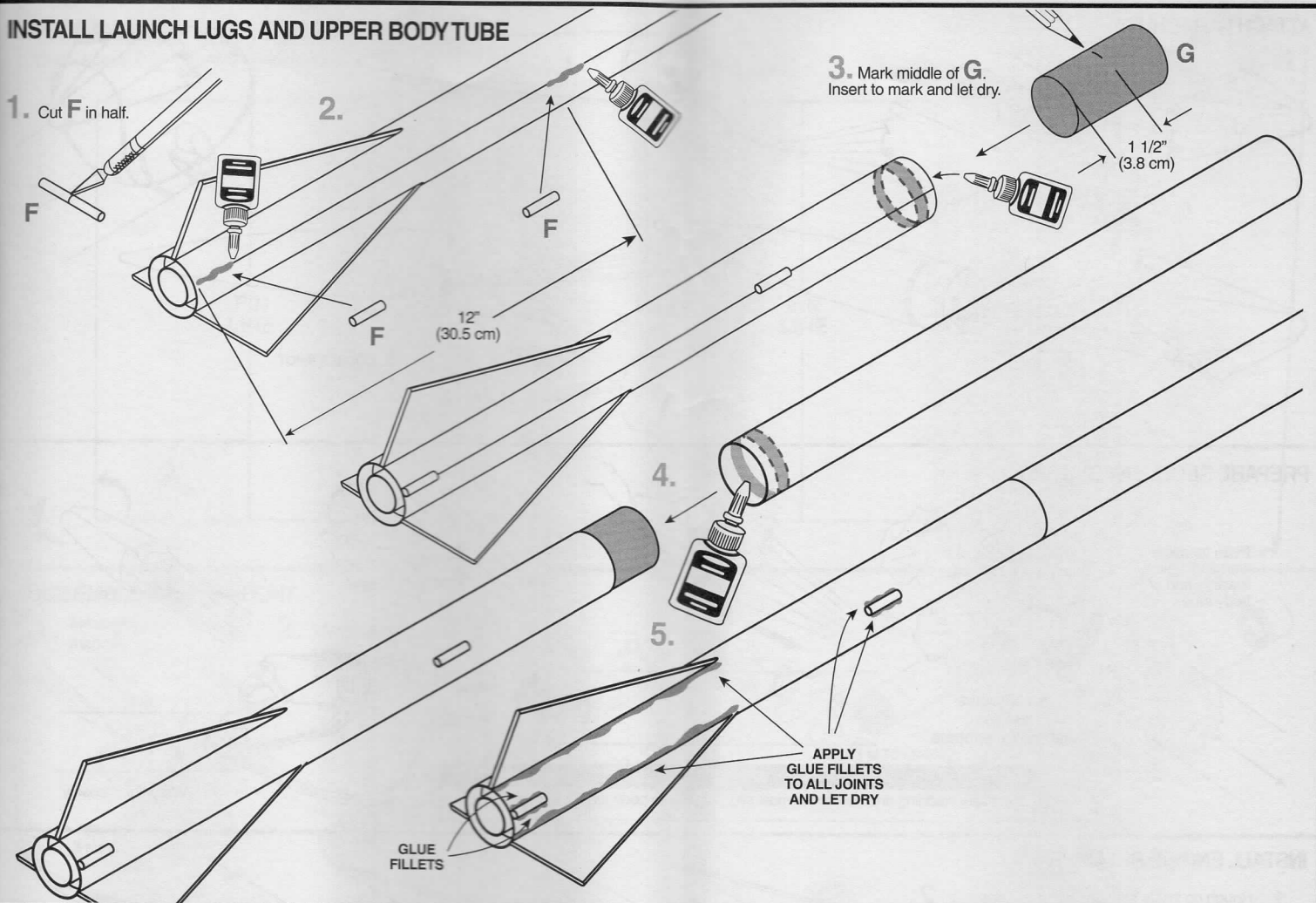
CHECK ALIGNMENT AND THEN LET DRY

INSTALL LAUNCH LUGS AND UPPER BODY TUBE

1. Cut F in half.

2.

3. Mark middle of G. Insert to mark and let dry.



APPLY GLUE FILLETS TO ALL JOINTS AND LET DRY

GLUE FILLETS

INSTALL SHOCK CORD

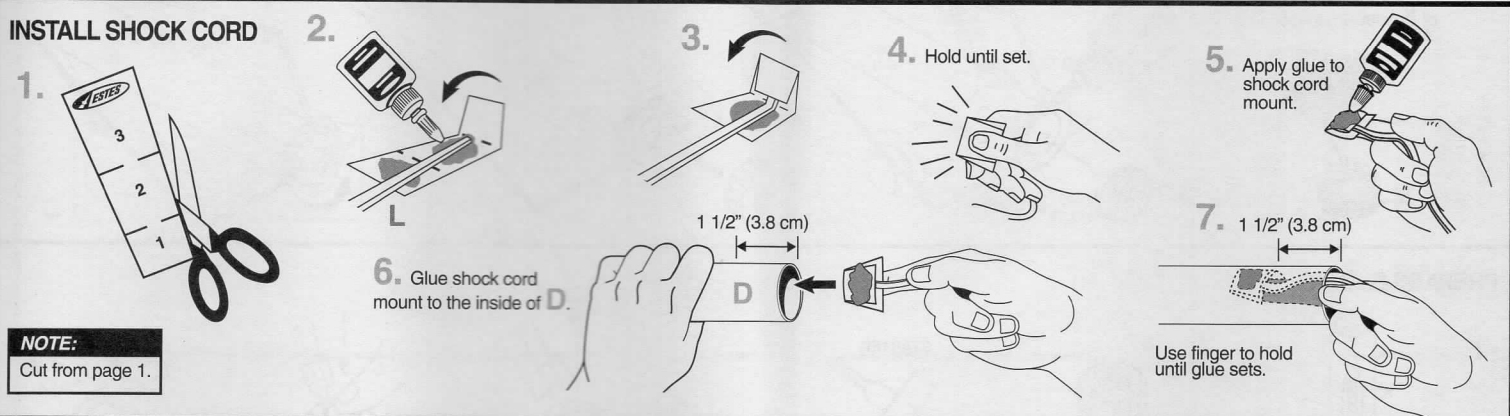
1.

2.

3.

4. Hold until set.

5. Apply glue to shock cord mount.



6. Glue shock cord mount to the inside of D.

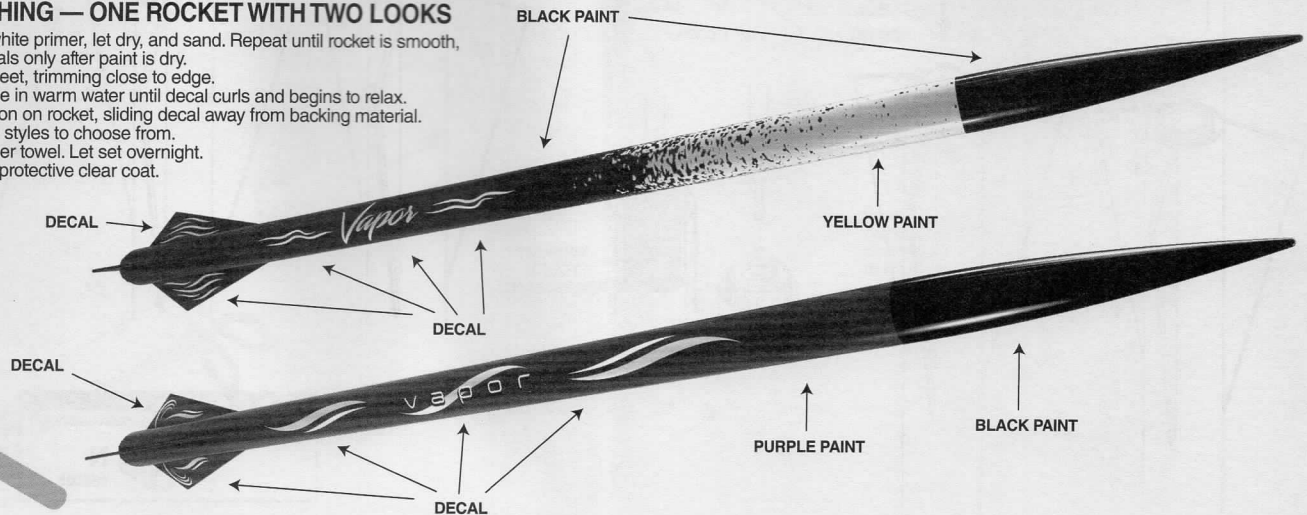
Use finger to hold until glue sets.

NOTE:

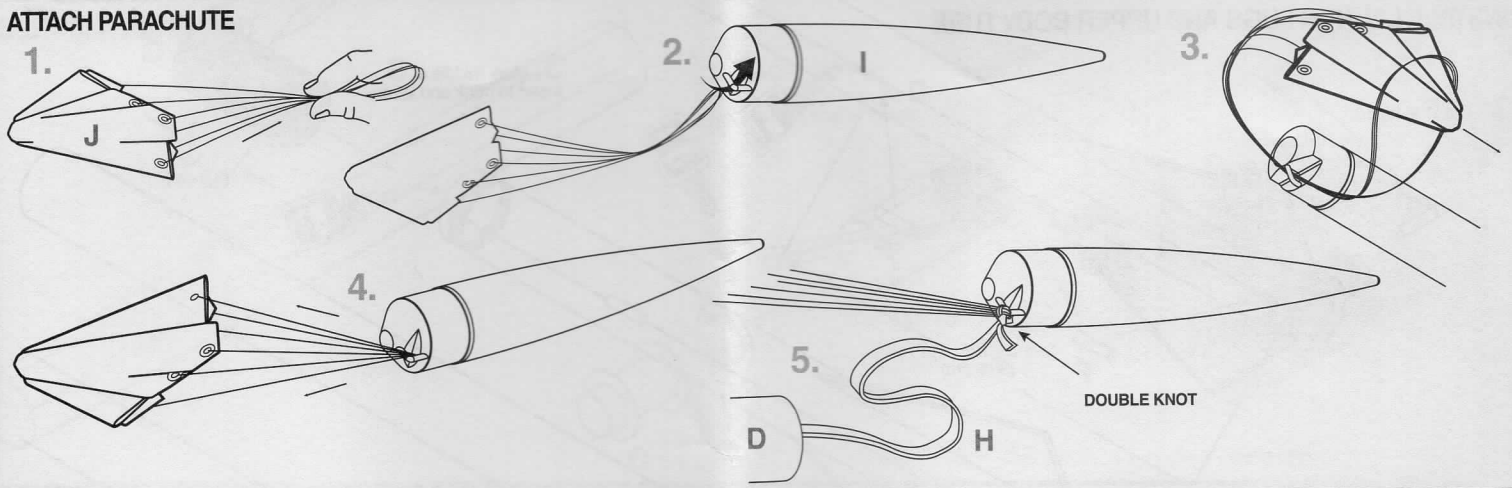
Cut from page 1.

ROCKET FINISHING — ONE ROCKET WITH TWO LOOKS

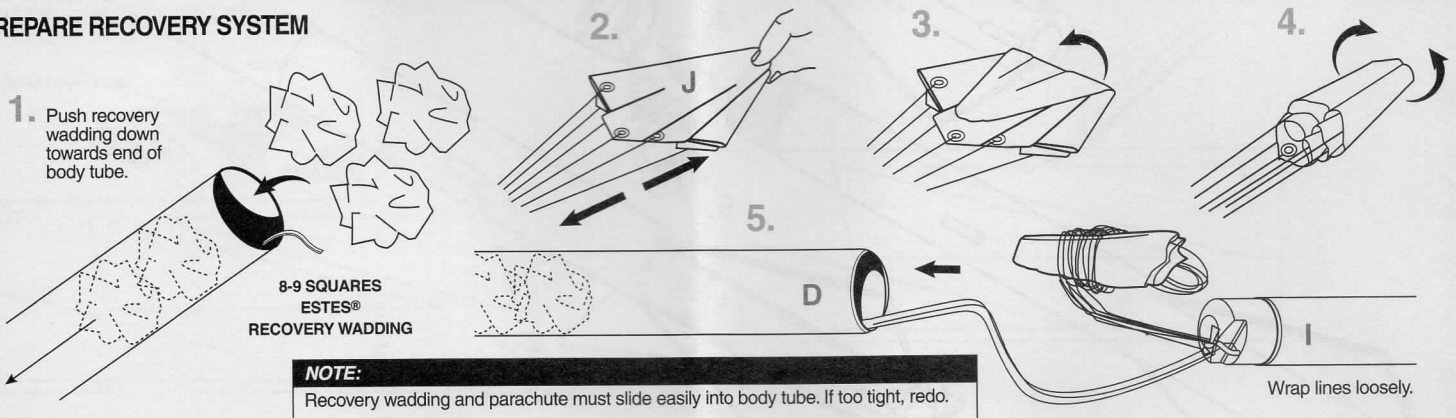
1. Spray rocket with white primer, let dry, and sand. Repeat until rocket is smooth, then paint. Apply decals only after paint is dry.
2. Cut decals from sheet, trimming close to edge.
3. One at a time, place in warm water until decal curls and begins to relax.
4. Remove and position on rocket, sliding decal away from backing material. There are two design styles to choose from.
5. Blot with clean paper towel. Let set overnight.
6. OPTIONAL: Apply protective clear coat.



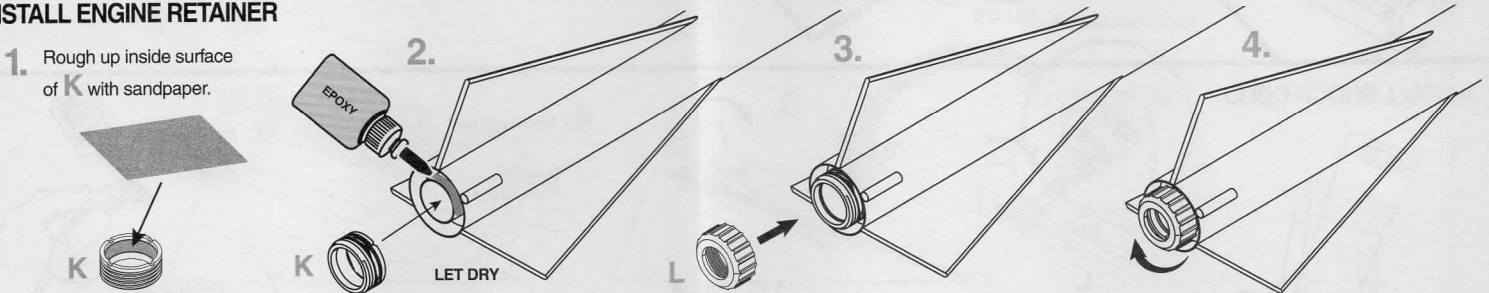
ATTACH PARACHUTE



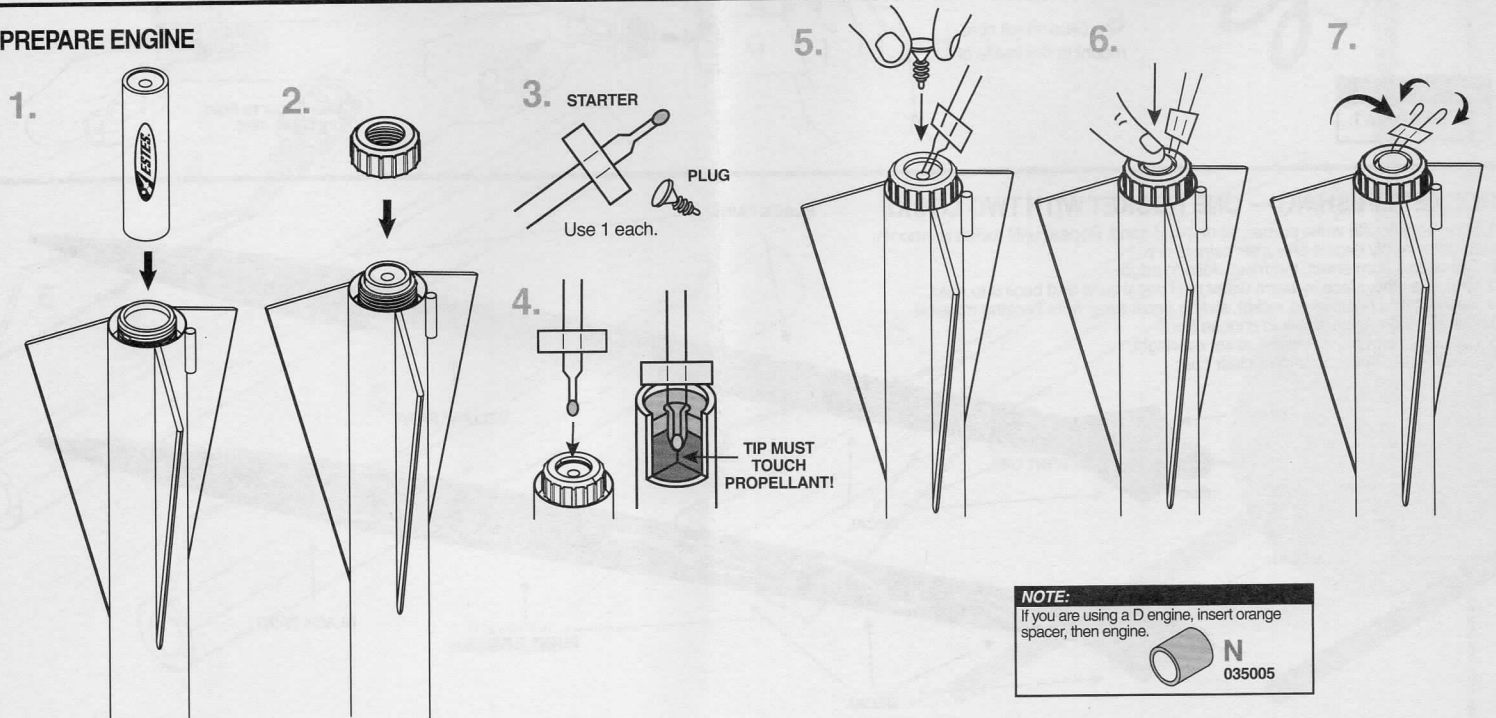
PREPARE RECOVERY SYSTEM



INSTALL ENGINE RETAINER

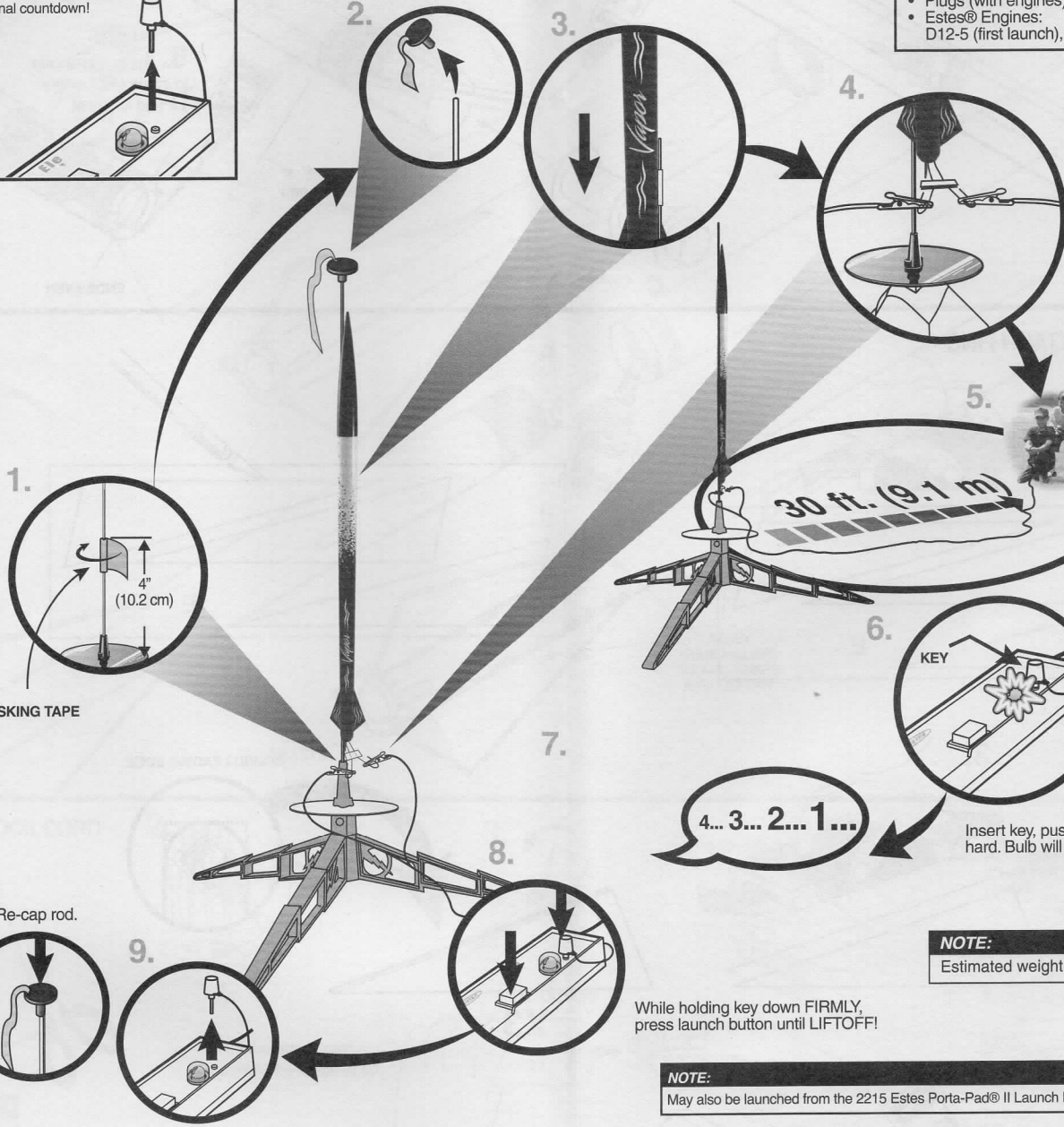
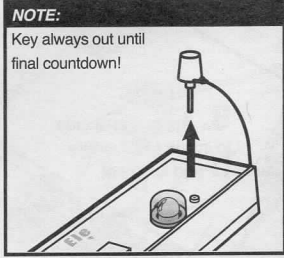


PREPARE ENGINE



COUNTDOWN AND LAUNCH

- ESTES® LAUNCH SUPPLIES NEEDED**
(Sold Separately)
- Porta-Pad® E Launch Pad
 - E Launch Controller
 - Requires 3/16 in. (5 mm) Maxi™ Launch Rod
 - Recovery Wadding
 - Starters (with engines)
 - Plugs (with engines)
 - Estes® Engines:
D12-5 (first launch), E12-6



NOTE:
Fully extend your launch controller wire before launching.

NOTE:
Estimated weight: 3.5 oz. (99.2 g)

While holding key down FIRMLY, press launch button until LIFTOFF!

NOTE:
May also be launched from the 2215 Estes Porta-Pad® II Launch Pad.

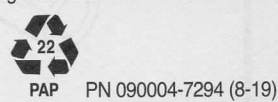
⚠ WARNING: FLAMMABLE
To avoid serious injury, read instructions & NAR Safety Code included with engines. **PREPARE YOUR ENGINE ONLY WHEN YOU ARE OUTSIDE AT THE LAUNCH SITE PREPARING TO LAUNCH.** If you do not use your prepared engine, remove the starter before storing your engine.

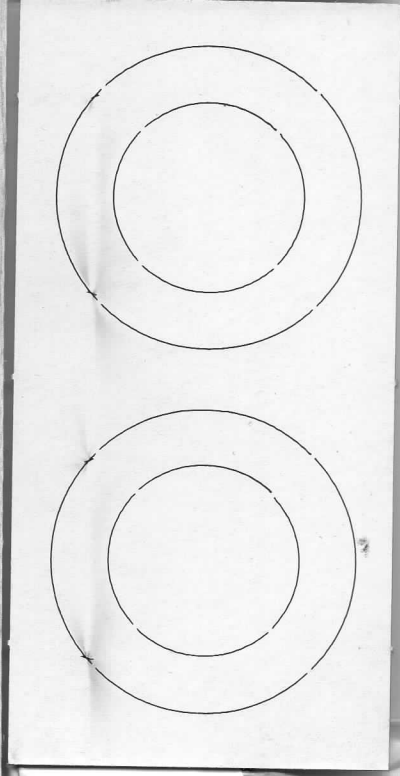
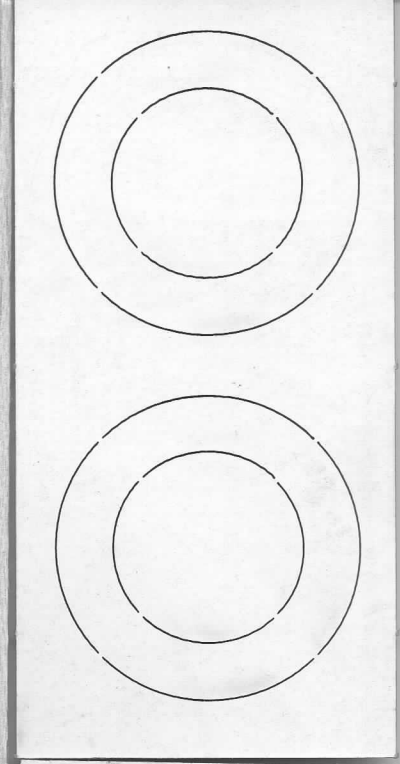
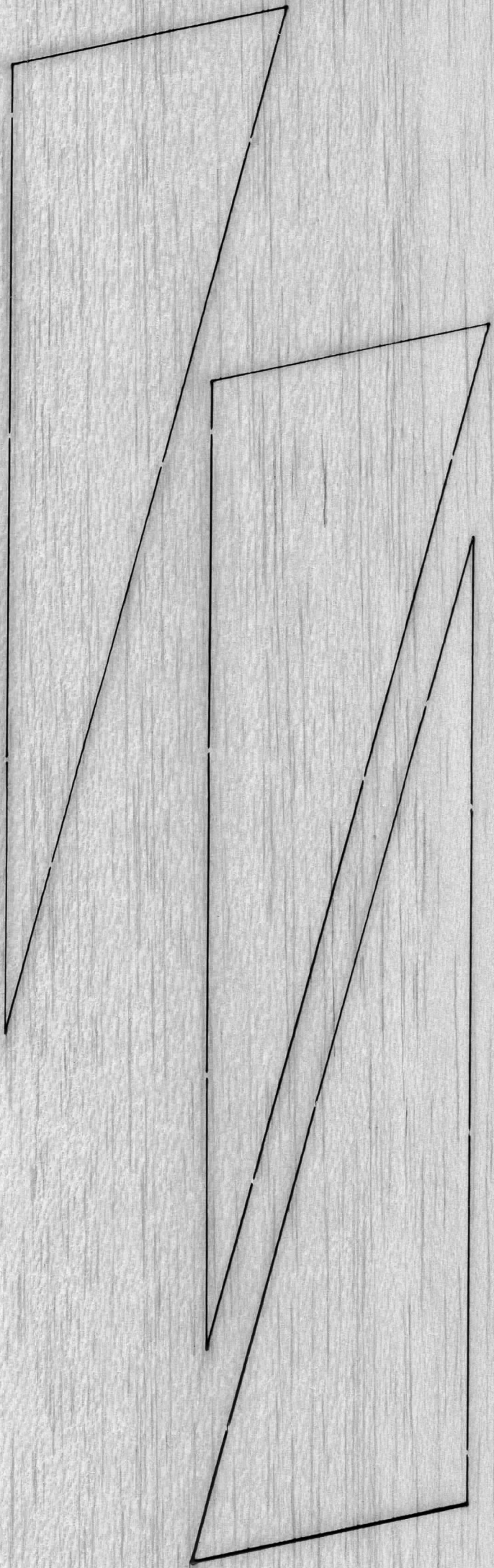
PRECAUTIONS

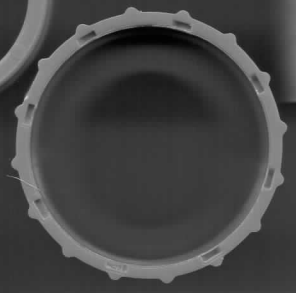
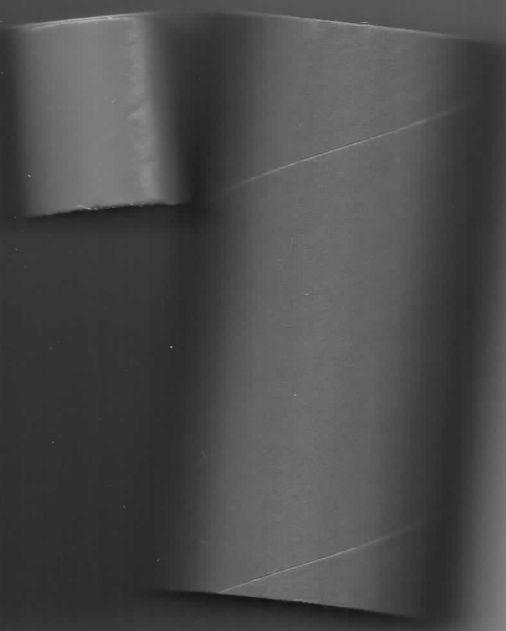


PRE-LAUNCH CHECK For safety, never launch a damaged rocket. Check the rocket's body, nose cone and fins. Also, check the engine mount, recovery system and launch lug(s). Repair any damage before launching the rocket.
FLYING YOUR ROCKET Choose a large field (500 ft. [152 m] square) free of dry weeds and brown grass. The larger the launch area, the better your chance of recovering your rocket. Football fields and playgrounds are great. Launch only with little or no wind and good visibility. Always follow the National Association of Rocketry (NAR) SAFETY CODE (enclosed).
MISFIRES TAKE THE KEY OUT OF THE CONTROLLER. WAIT ONE MINUTE BEFORE GOING NEAR THE ROCKET! Disconnect the starter clips and remove the engine. Take the plug and starter out of the engine. If the starter has burned, it worked but did not ignite the engine because it was not touching the propellant inside the engine. Put a new starter all the way inside the engine without bending it. Push the plug in place. Repeat the steps under Countdown and Launch.

© 2019 Estes Industries, LLC. All rights reserved.
Estes Industries, LLC, 1295 H Street, Penrose, CO 81240-9698. Made in Guangdong, China.









V E R O J O R

03/29/19
Lapras™



body tubes - bt60 2 @ 18 in

engine tube - bt50 x 4 in

nose cone is 8.5 in long

launch lug - 2 in x 3/16

shock cord - 50 in x 1/4 in

balsa 1/8 in

VAPOR™

FLYING MODEL ROCKET KIT

Soars up to

900 ft
274 m

On a E12-6 Engine

Other engines you can use:
D12-5, E12-6

**One rocket —
two looks!**

**Decals
included
for both!**



Requires 3/16 in. (5 mm)
Maxi™ Launch Rod,
Porta-Pad® E Launch Pad
and E Launch Controller

Length: 45.2 in.
114.8 cm

Diameter: 1.64 in.
42 mm

Recovery: Parachute
18 in. (45.7 cm)

03/29/19

EST7294



PN 090002-7294 (7-19)

© 2019 Estes Industries, LLC.
All rights reserved.

QTY: 1

BEGINNER

INTERMEDIATE

ADVANCED

EXPERT

MASTER