





EstesRockets.com

# ORANGE BULLET™

7295



MODEL ROCKET INSTRUCTIONS

KEEP FOR FUTURE REFERENCE

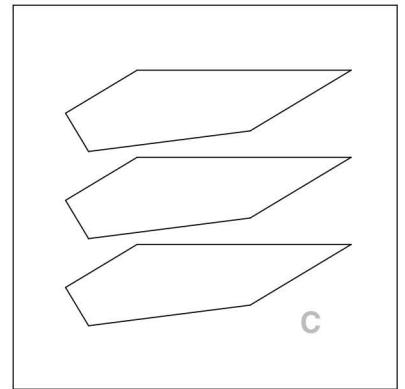
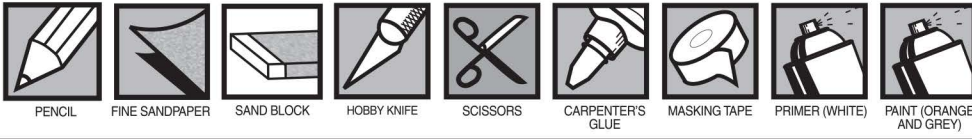
### Designer Signature Series™

The Orange Bullet was a study in changing the center of gravity for a safe recovery. It was designed to kick the engine out at apogee of flight and then lay on its side and gently tumble instead of streamlining in nose first. It had small metal plates on the fins to reliably shift the weight after the engine ejected. This modern replica eliminates the forward vent holes and does not use the metal plates to shift the CG. It still functions the same by kicking the engine out at apogee and then safely recovering. Today we call this "featherweight recovery".

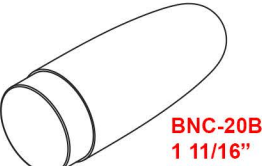
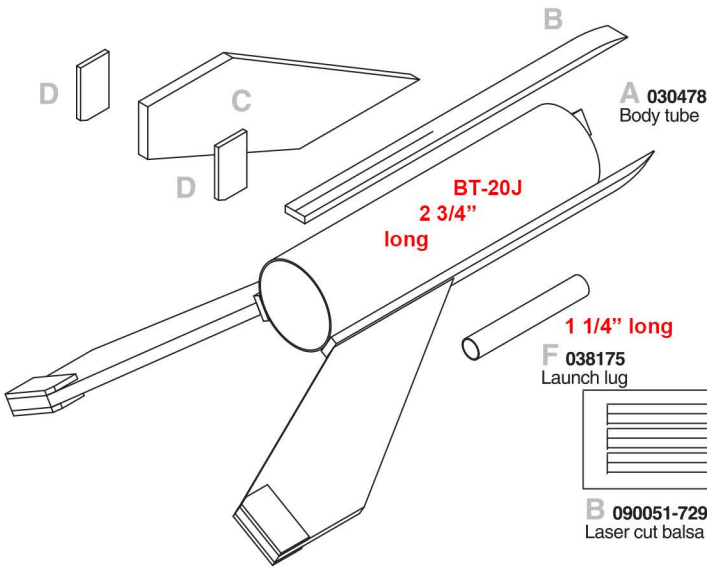
*Tom Estes*

IMPORTANT: Please record date found on decal and keep for future reference. \_\_\_\_\_

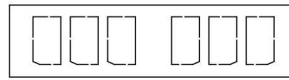
Read all instructions. Make sure you have all parts and supplies. Test fit all parts before applying glue. Product color and shape may vary.



C 090051-7295B 3/32" thick Laser cut balsa sheet



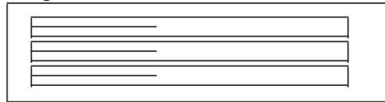
E 070229 Nose cone



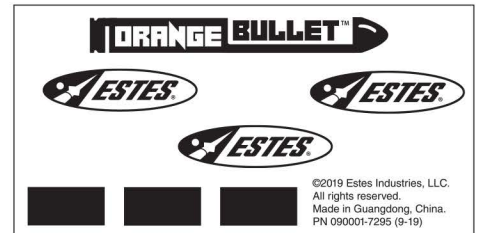
D 090052-7295 .06 mm Laser cut card stock



F 038175 Launch lug

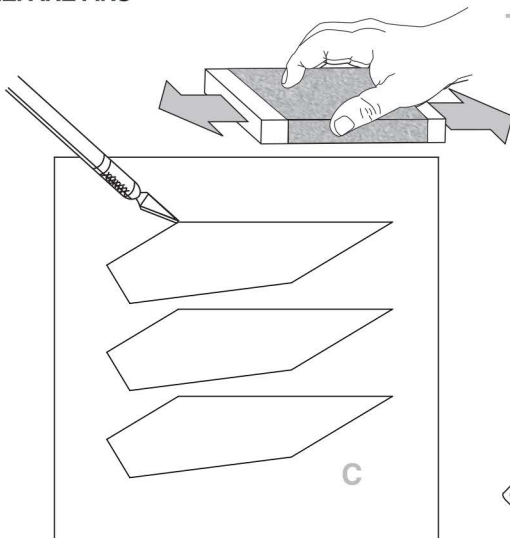


B 090051-7295A 1/16" thick Laser cut balsa sheet

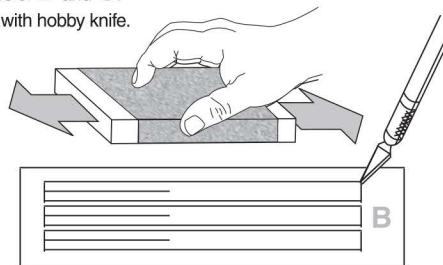


090001-7295 Waterslide decal

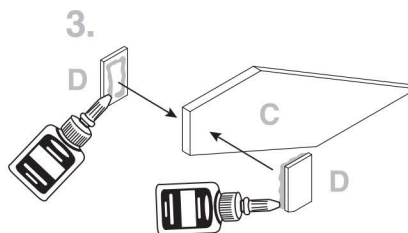
## PREPARE FINS



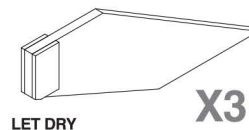
1. Sand both sides of B and C. Remove parts with hobby knife.



2. Remove parts with hobby knife.



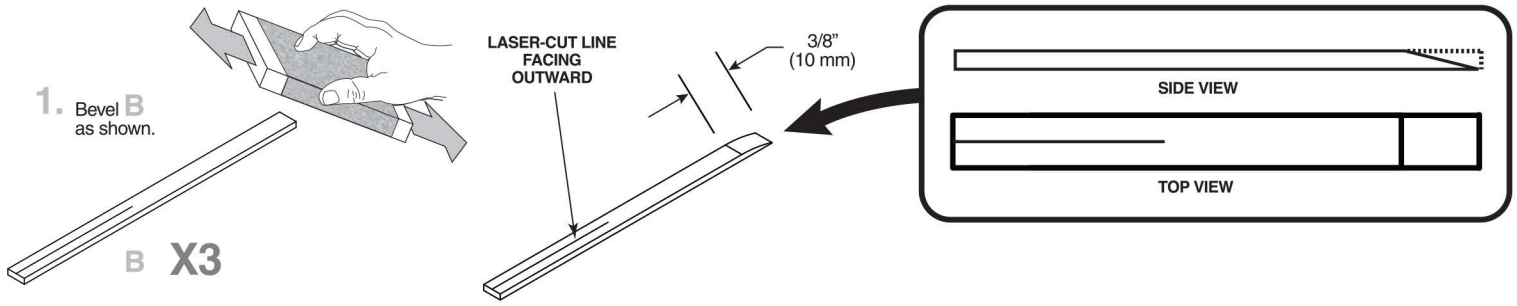
3. Hold until set.



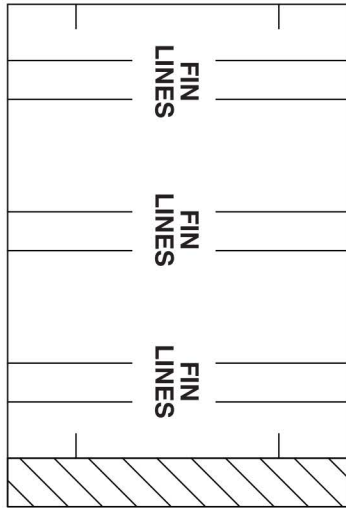
LET DRY

X3

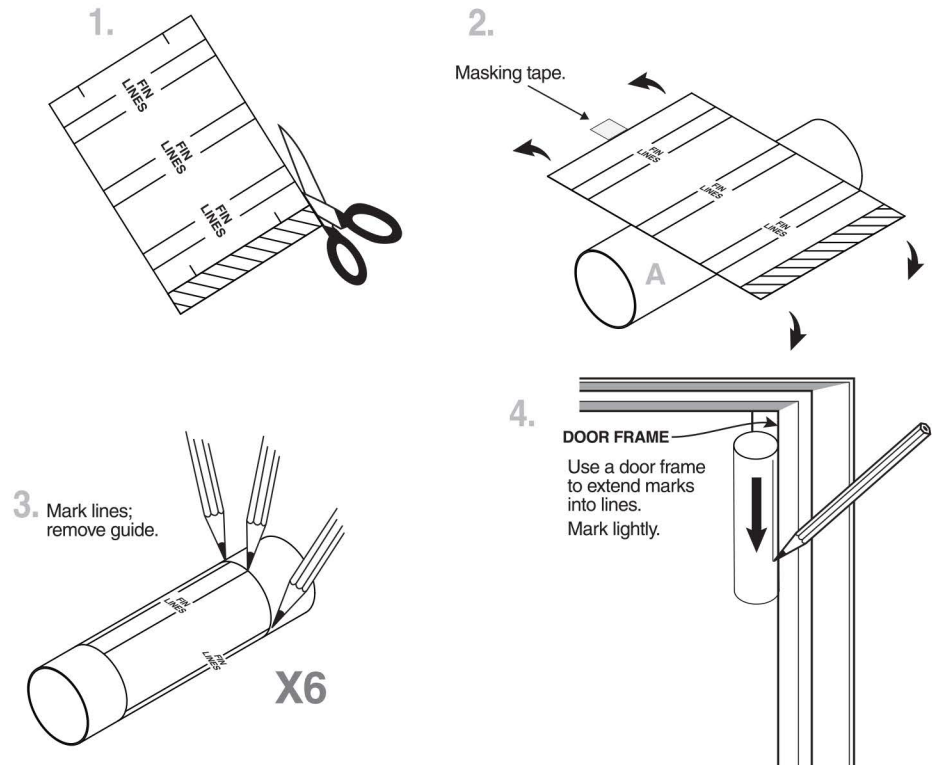
## PREPARE FIN SUPPORTS



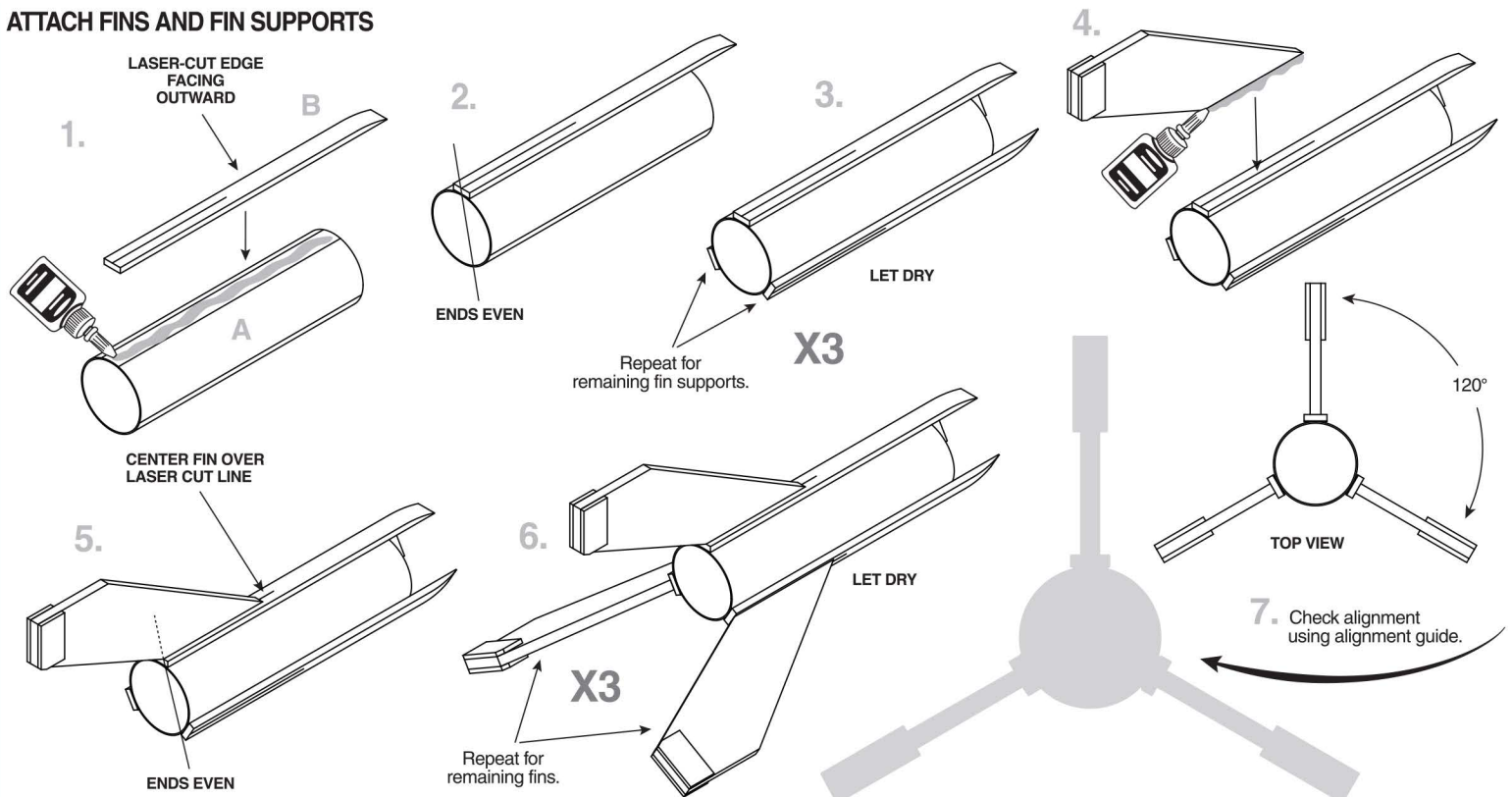
## TUBE MARKING GUIDE



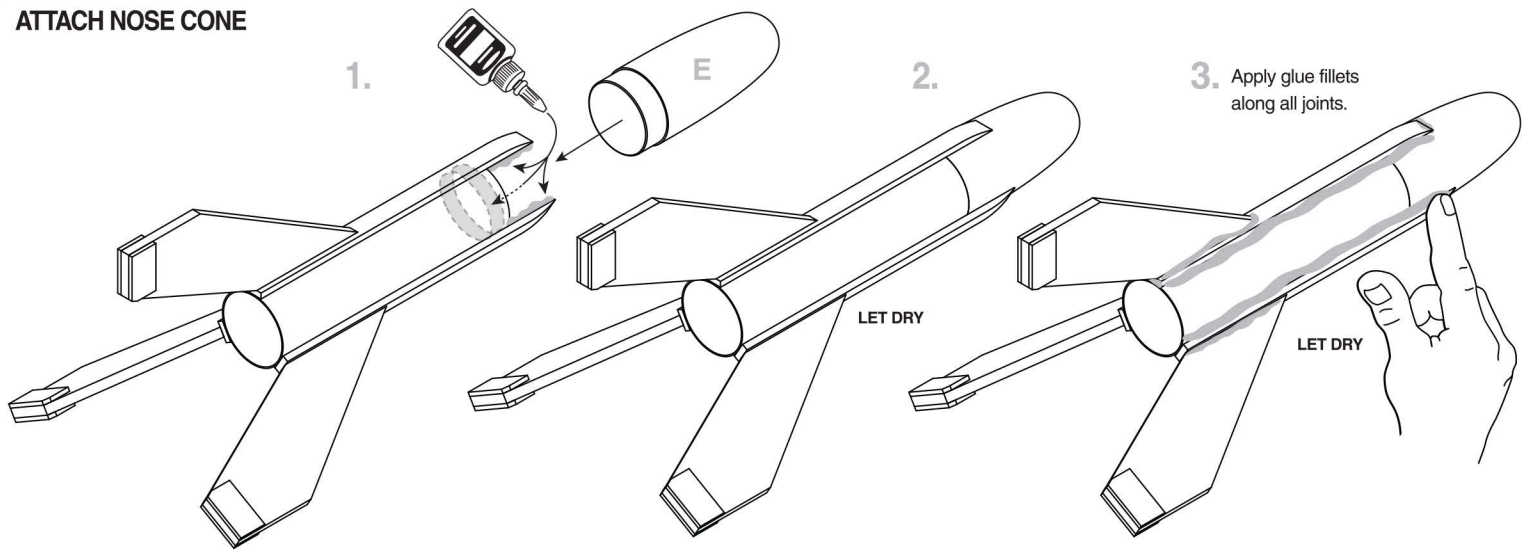
Make a copy if you want to keep instructions.



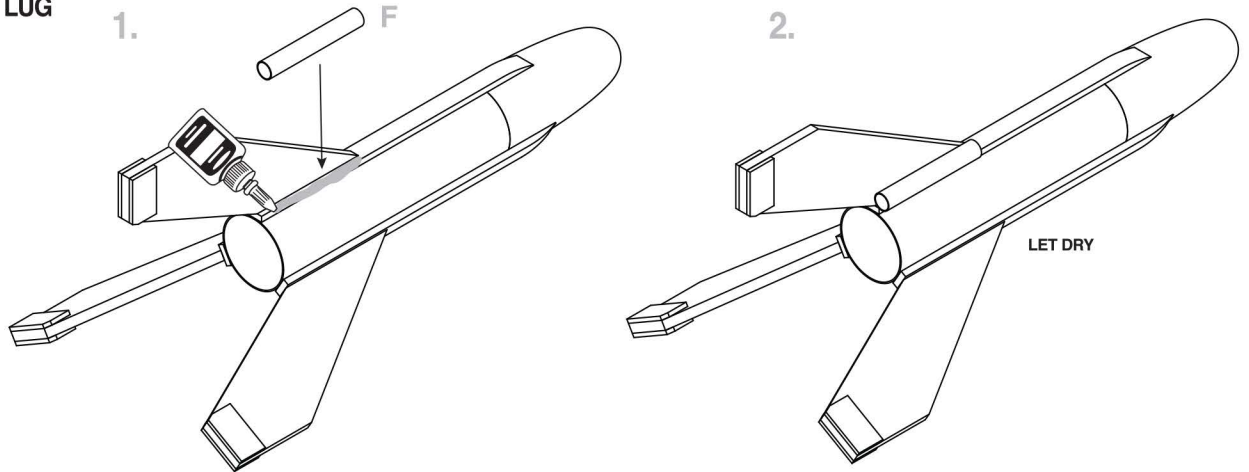
## ATTACH FINS AND FIN SUPPORTS



### ATTACH NOSE CONE

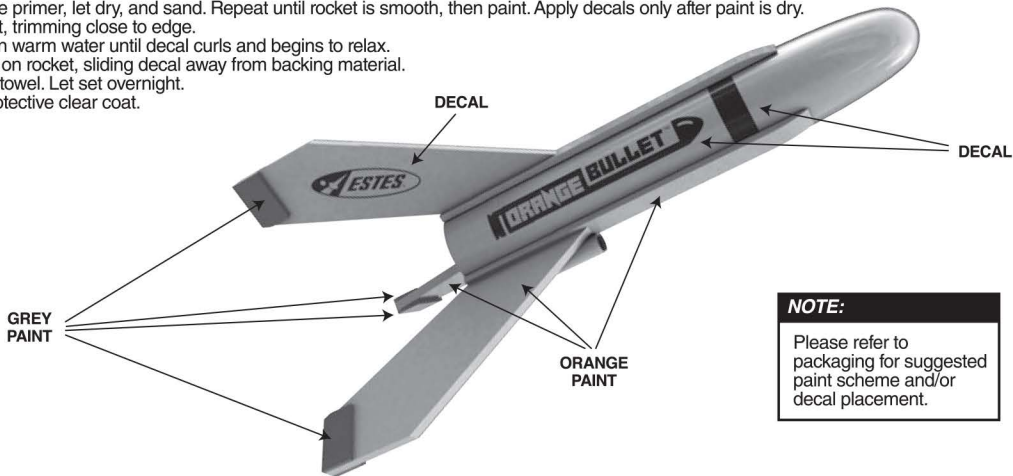


### ATTACH LAUNCH LUG



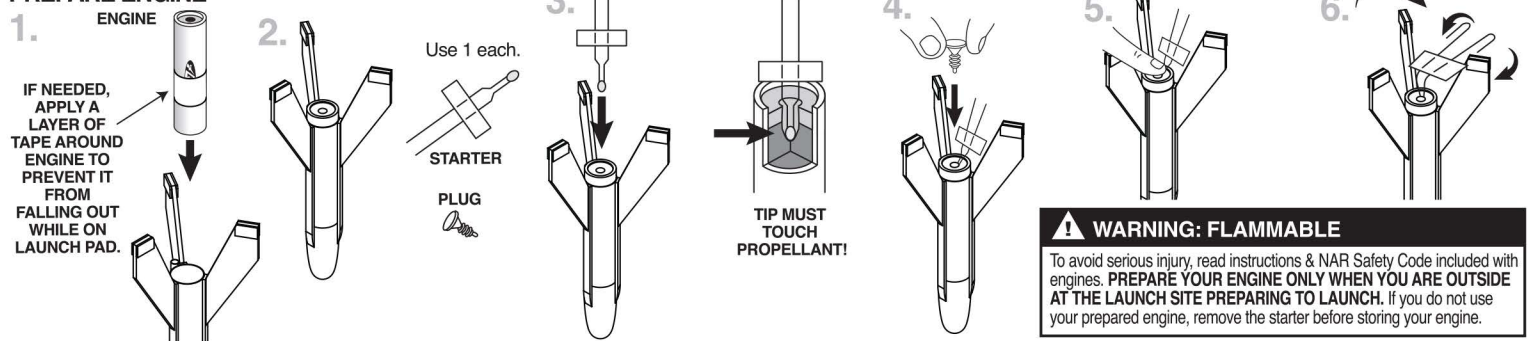
### ROCKET FINISHING

1. Spray rocket with white primer, let dry, and sand. Repeat until rocket is smooth, then paint. Apply decals only after paint is dry.
2. Cut decals from sheet, trimming close to edge.
3. One at a time, place in warm water until decal curls and begins to relax.
4. Remove and position on rocket, sliding decal away from backing material.
5. Blot with clean paper towel. Let set overnight.
6. OPTIONAL: Apply protective clear coat.



**NOTE:**  
Please refer to packaging for suggested paint scheme and/or decal placement.

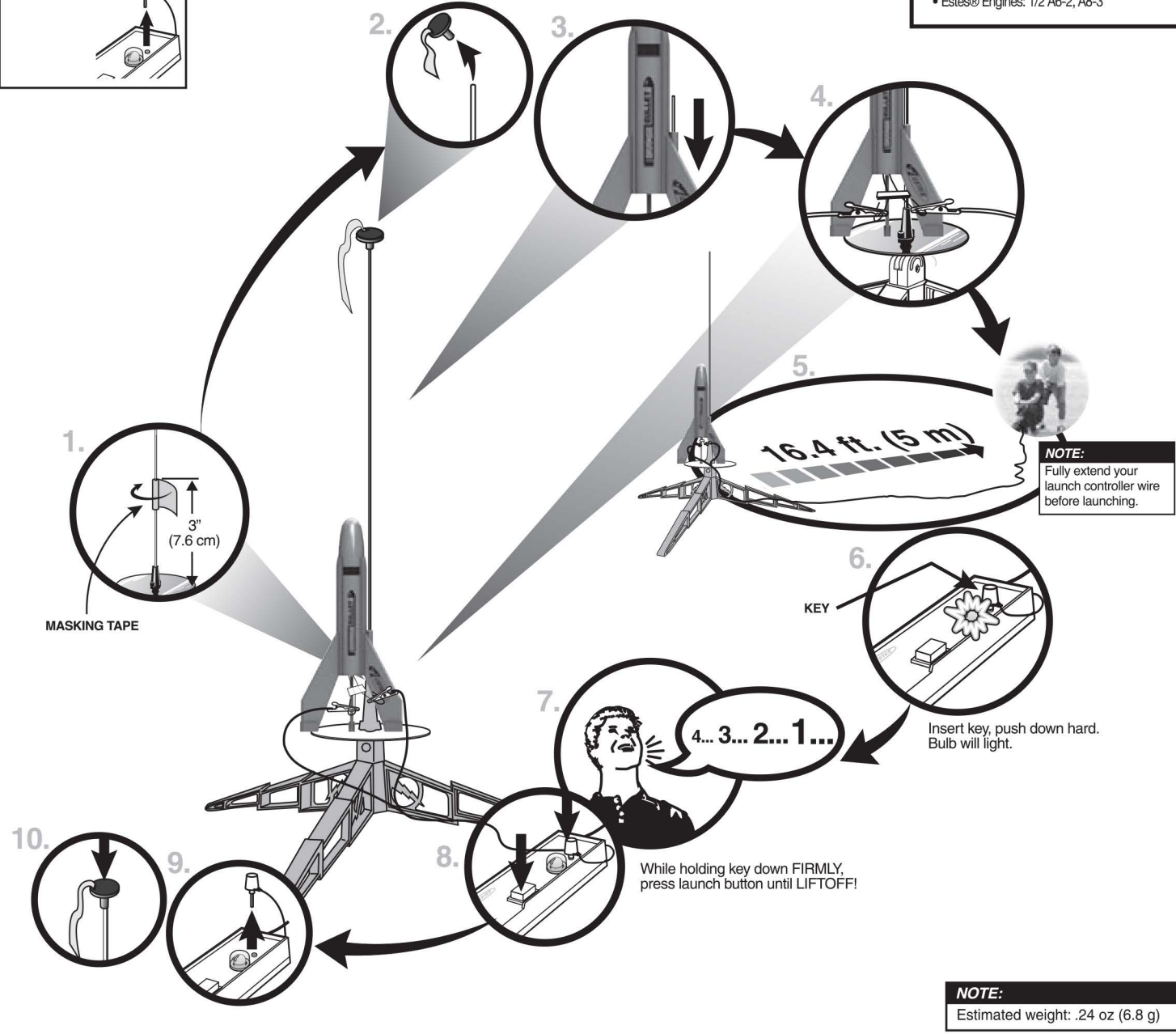
### PREPARE ENGINE



# COUNTDOWN AND LAUNCH

- ESTES® LAUNCH SUPPLIES NEEDED**  
(Sold Separately)
- Launch Pad
  - Launch Controller
  - Starters (with engines)
  - Plugs (with engines)
  - Estes® Engines: 1/2 A6-2, A8-3

**NOTE:**  
Key always out until final countdown!

## PRECAUTIONS



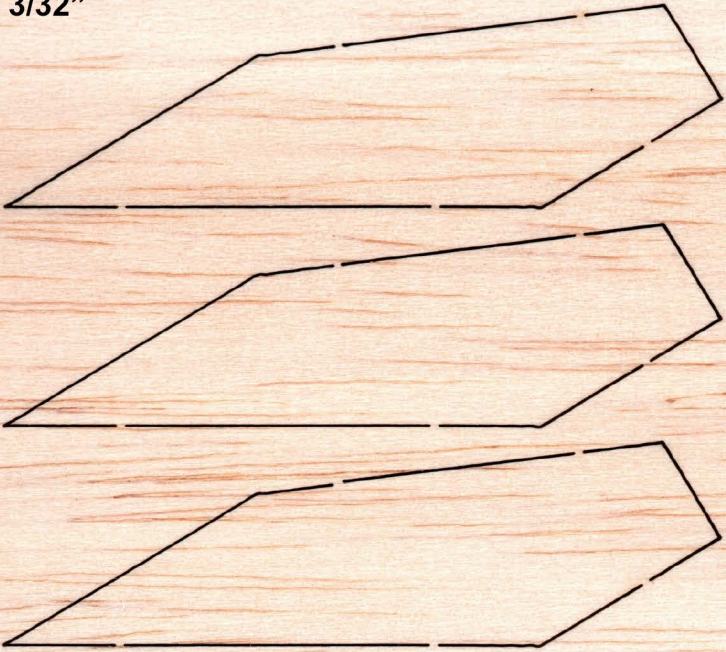
**PRE-LAUNCH CHECK** For safety, never launch a damaged rocket. Check the rocket's body, nose cone and fins. Also, check the engine mount, recovery system and launch lug(s). Repair any damage before launching the rocket.

**FLYING YOUR ROCKET** Choose a large field (500 ft. [152 m] square) free of dry weeds and brown grass. The larger the launch area, the better your chance of recovering your rocket. Football fields and playgrounds are great. Launch only with little or no wind and good visibility. Always follow the National Association of Rocketry (NAR) SAFETY CODE (enclosed).

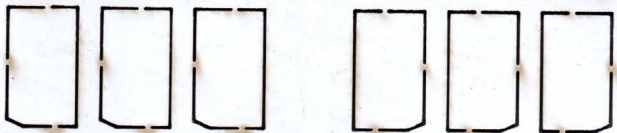
**MISFIRES TAKE THE KEY OUT OF THE CONTROLLER. WAIT ONE MINUTE BEFORE GOING NEAR THE ROCKET.** Disconnect the micro-clips and remove the engine. Take the plug and starter out of the engine. A burned starter means the starter tip was not touching engine propellant. Install a new starter; be sure the tip is touching propellant inside the engine. Push the plug in place. Repeat steps under Countdown and Launch.



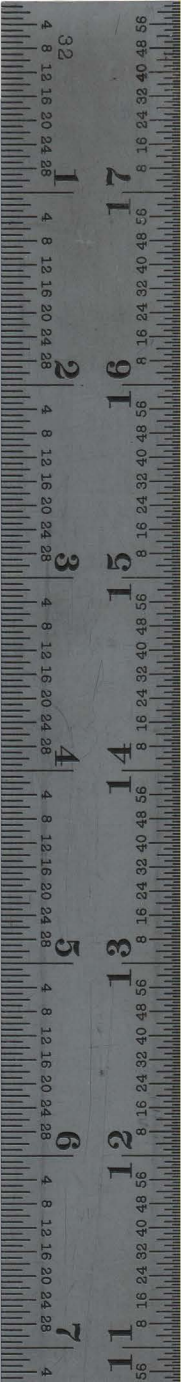
3/32"



1/16"



.06 mm



# ORANGE BULLET™



©2019 Estes Industries, LLC.  
All rights reserved.  
Made in Guangdong, China.  
PN 090001-7295 (9-19)



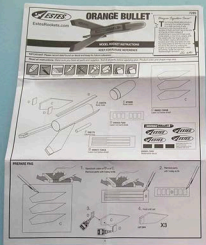


Photo by Chris Michielssen



*Designer Signature Series™*

# ORANGE BULLET™

FLYING MODEL ROCKET KIT

Powered by

**500**  
**152**

On an A6-3 Engine

Other engines you can use:

1-2A4-2

Based on Vern Estes' very first rocket design!



Length: 5.9 in.  
15 cm

Diameter: 2.6 in.  
66 mm

Recovery: Featherweight

EST7295



*Vern Estes, Designer*

In 1953, Vern Estes, founder of Estes Industries, designed the Astron Scout, which was the first Estes model rocket packaged for sale as a complete kit. The Orange Bullet was the prototype to the Astron Scout. With the "Signature Series™" line, you can collect kits created by historic designers!



© 2014 Estes Industries, LLC  
All Rights Reserved

QTY: 1

BEGINNER

INTERMEDIATE

ADVANCED

EXPERT

MASTERS