



ESTES INDUSTRIES (8-98) 84403
1295 H Street
Penrose, CO 81240 EST 2159

FX
SERIES
ALMOST READY TO FLY

FIREFLASH™

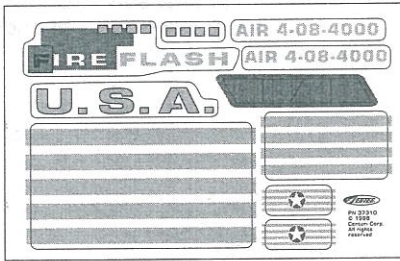
FLYING MODEL ROCKET KIT INSTRUCTIONS

MATERIALS REQUIRED: PENCIL, WHITE OR YELLOW GLUE, TUBE-TYPE PLASTIC CEMENT, SANDPAPER, MASKING TAPE, HOBBY KNIFE, LAUNCH ROD

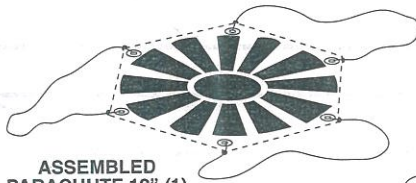
ALL GLUED AREAS ARE SHADED IN GRAY

Be sure to read all instructions, test fit all parts, & sand if necessary before gluing.

PARTS LAYOUT



DECAL SHEET (1)
37310



ASSEMBLED PARACHUTE 12" (1)
35801

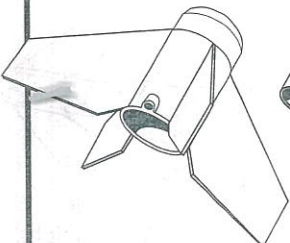
BLACK PLASTIC TUBE COUPLER WITH LAUNCH LUG (1)
71072

BLACK PLASTIC CAVITY CAP BT-50 (1)
71071

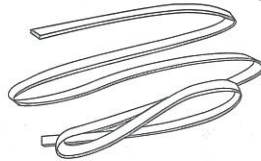


CLAY WEIGHT (2 PACKS)
85705

LARGE DIAMETER GRAY BODY TUBE BT50 (1)
30372



BLACK PLASTIC FIN UNIT PFU50D (1)
34060



SHOCK CORD #1/8 x 36 (1)
38375

LARGE DIAMETER BLACK BODY TUBE BT50-9 (1)
30351

BLACK PLASTIC TUBE ADAPTER TA550 (1)
71067



RED NOSE CONE PNC5A (1)
72598

SMALL DIAMETER BLACK BODY TUBES BT5-9 (2)
30293



WHITE PLASTIC FIN UNIT BT-5 (1)
72620

RED TUBE COUPLER KJT-5d (1)
30180

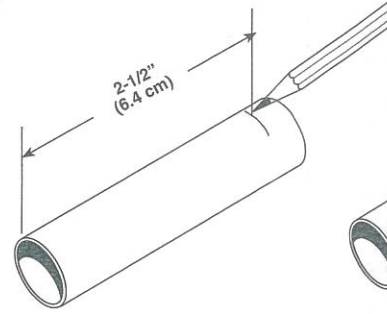
GREEN ADAPTER RING #2050S (1)
30164-2

BLUE ENGINE MOUNT TUBE 20J (1)
30326-1

SPLIT ADAPTER RING 2050S (1)
80425

ENGINE HOOK EH-2A (1)
35021

1.

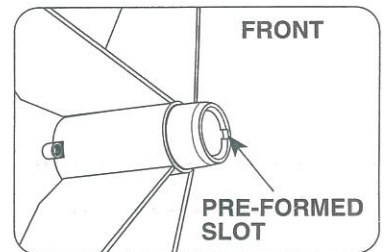


A. Mark the blue engine mount tube at 2-1/2" (6.4 cm).

B. Use a 1/8" hole punch to punch a 1/8" hole in the 2-1/2" mark.

2.

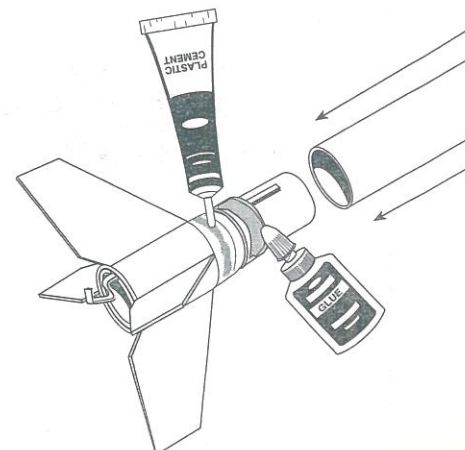
A. Test fit the engine mount into the front of the black fin unit.

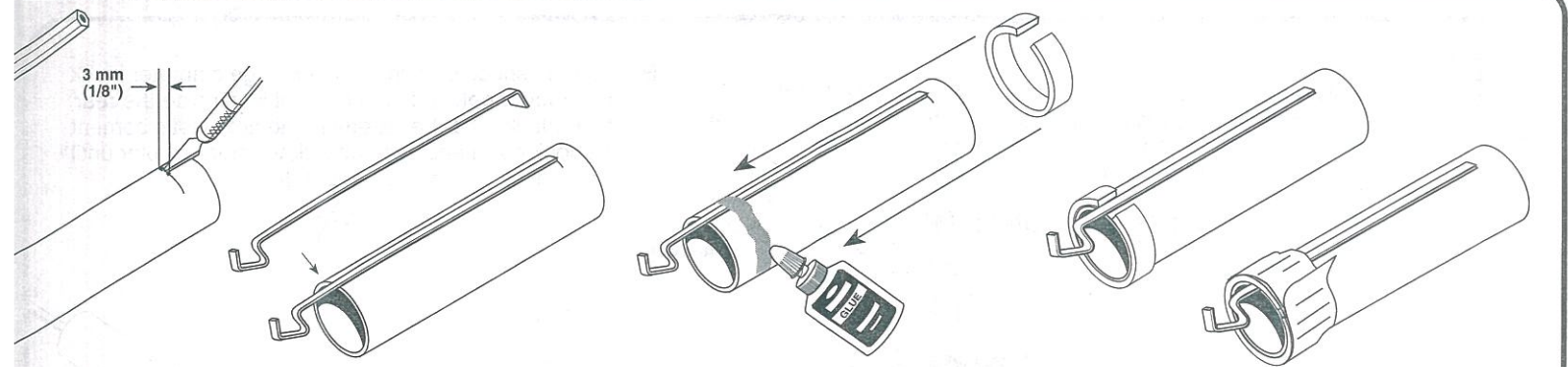


NOTE: The front of the fin unit has a pre-formed slot for the engine hook and a shoulder.

3.

A. Apply a band of white or yellow glue and a band of plastic cement on the fin unit. In one continuous motion, slide the black plastic tube over the adapter ring until it reaches the fin unit. Immediately wipe away excess glue and plastic cement.





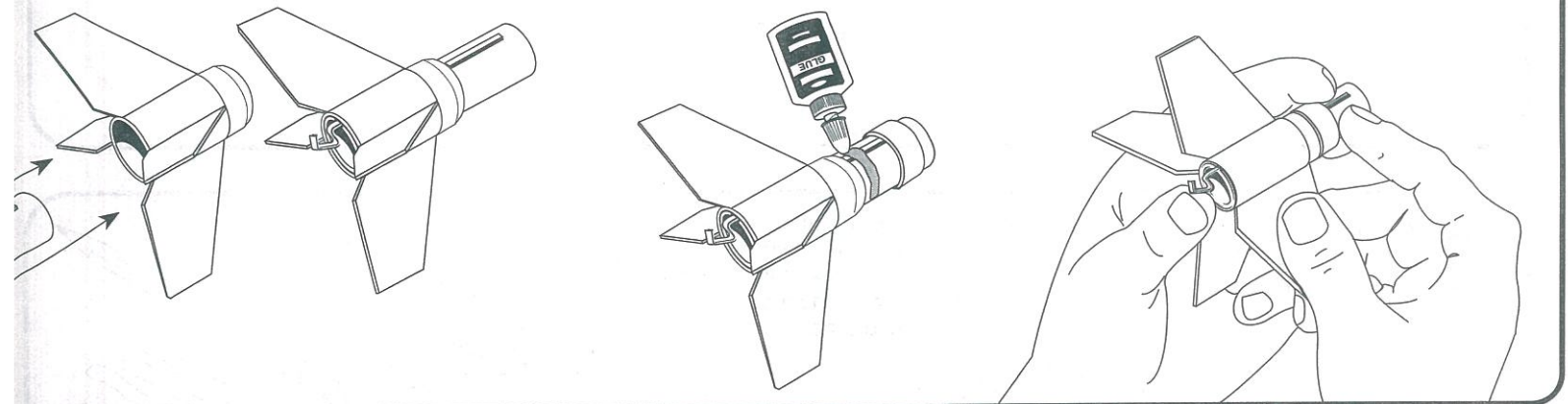
by knife to make
3 mm
(1/8") wide slit at
6.4 cm mark.

C. Insert the engine hook into the slit as shown.

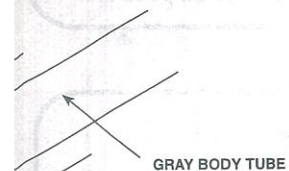
D. Apply glue to the rear of the engine mount tube and slide the split adapter ring onto the tube until their rear edges are even. Wrap masking tape around the ring in order to pinch the ring together so that it contacts the tube all the way around, let dry, and **remove tape**.

ear B. Slide the engine mount into the rear of the fin unit so that the engine hook rests in the pre-formed slot and the rear edges of the tube and fin unit are even.

C. Slide the green adapter ring part way down the front of the engine mount tube. (You may need to sand the inside of the ring to make it fit.) Apply a band of glue around the engine mount tube between the ring and fin unit, hold the rear edges even, and slide the ring down the tube in one continuous motion. **DO NOT STOP** moving the ring until it rests evenly against the shoulder of the fin unit as **THE GLUE WILL GRAB AND PREVENT THE RING FROM BEING POSITIONED PROPERLY**. Let dry.



ue around the adapter ring
nd the front of the shoulder
otion slide the gray body
e rests evenly at top edge of
y excess cement.



4. A. Thread the shock cord into the cavity in the plastic tube coupler, then tie the shock cord off to the bar that runs across the front of the cavity.

B. Carefully apply a small amount of plastic cement around the rear edge of the cavity and fit the cavity cap into place. **DO NOT GET PLASTIC CEMENT ON THE SHOCK CORD!** Let dry.

