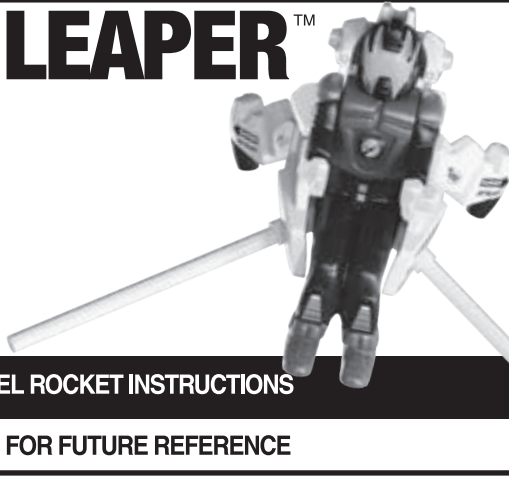




EstesRockets.com

LEAPER™

7297



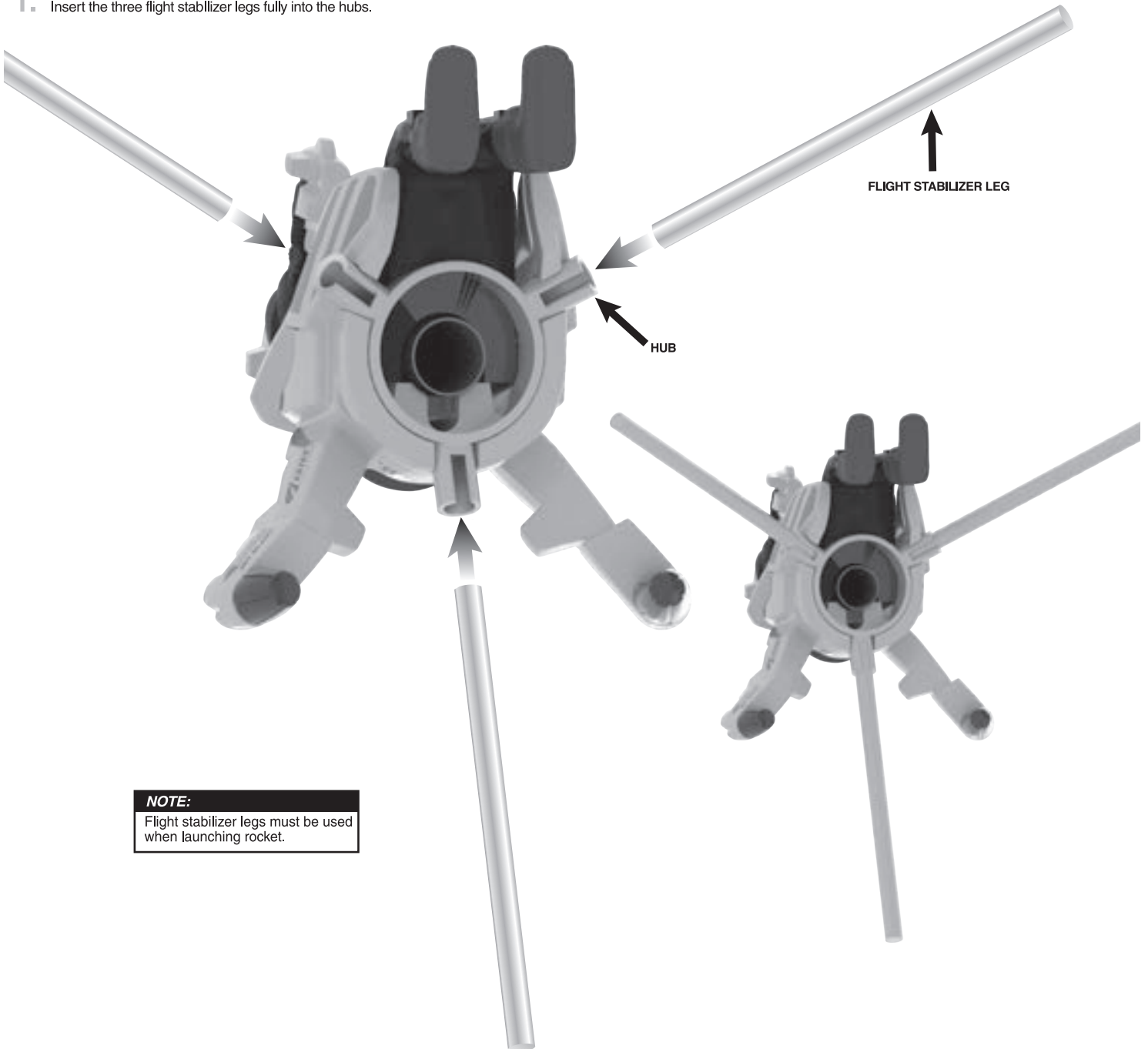
MODEL ROCKET INSTRUCTIONS

KEEP FOR FUTURE REFERENCE

IMPORTANT: Please record date found on box and keep for future reference. _____

READ ALL INSTRUCTIONS. Make sure you have all parts and launch supplies.

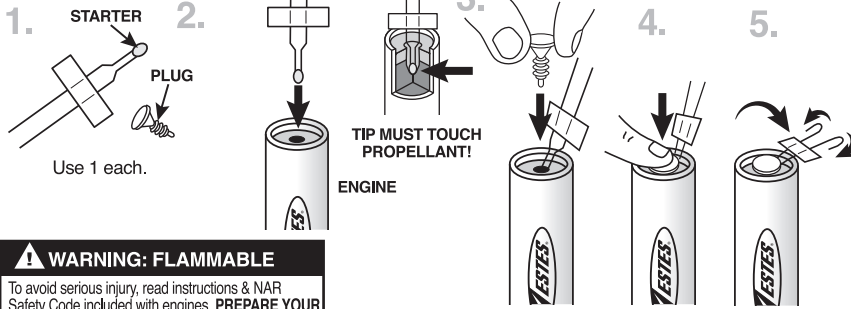
1. Insert the three flight stabilizer legs fully into the hubs.



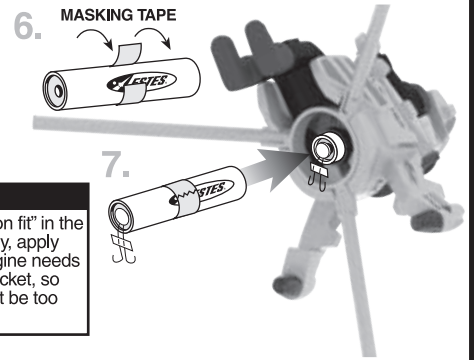
NOTE:

Flight stabilizer legs must be used when launching rocket.

PREPARE ENGINE



NOTE:
Engine must "friction fit" in the rocket. If necessary, apply masking tape. Engine needs to eject from the rocket, so the "friction fit" can't be too tight.



⚠ WARNING: FLAMMABLE
To avoid serious injury, read instructions & NAR Safety Code included with engines. **PREPARE YOUR ENGINE ONLY WHEN YOU ARE OUTSIDE AT THE LAUNCH SITE PREPARING TO LAUNCH.** If you do not use your prepared engine, remove the starter before storing your engine.

ESTES® LAUNCH SUPPLIES NEEDED (Sold Separately)

- Launch Pad
- Launch Controller
- Starters (with engines)
- Plugs (with engines)
- Estes® Engines: A10-0T

NOTE:
Key always out until final countdown!

1. **MASKING TAPE**

NOTE:
Flight stabilizer legs must be used when launching rocket.

10.

9.

8.

7.

4... 3... 2... 1...

While holding key down FIRMLY, press launch button until LIFTOFF!

6. **KEY**

Insert key, push down hard. Bulb will light.

5. Fully extend your launch controller wire before launching.

4. **16.4 ft. (5 m)**

NOTE:
Estimated weight: .8 oz (22.7 g)

NOTE:
If your rocket needs repaired, you will need to use foam safe glue.

PRECAUTIONS



NAR SAFETY CODE



NO DRY GRASS OR WEEDS

PRE-LAUNCH CHECK For safety, never launch a damaged rocket. Check the rocket's body, nose cone and fins. Also, check the engine mount, recovery system and launch lug(s). Repair any damage before launching the rocket.

FLYING YOUR ROCKET Choose a large field (500 ft [152 m] square) free of dry weeds and brown grass. The larger the launch area, the better your chance of recovering your rocket. Football fields and playgrounds are great. Launch only with little or no wind and good visibility. Always follow the National Association of Rocketry (NAR) SAFETY CODE.

MISFIRES TAKE THE KEY OUT OF THE CONTROLLER. WAIT ONE MINUTE BEFORE GOING NEAR THE ROCKET. Disconnect the micro-clips and remove the engine. Take the plug and starter out of the engine. A burned starter means the starter tip was not touching engine propellant. Install a new starter; be sure the tip is touching propellant inside the engine. Push the plug in place. Repeat steps under Countdown and Launch.